

Deal 'positive' for Alliance

By Janine Baalbergen

An Irish company plans to take a stake in Alliance Group, in a deal hailed as positive for the local Alliance plant and the farming industry.

Alliance's Levin plant has 400 staff, making it the town's biggest employer. There have been concerns about its future after Alliance ran into debt problems.

Dawn Meats Group, one of Europe's biggest meat processors with annual revenue of \$5.8 billion, wants to inject \$250

million into the farmer-owned co-op, of which \$200 million will be used to buy down short term debt, run up by the Alliance Group in the past two years.

"Our Levin plant continues to perform well, and with the successful recapitalisation of Alliance, we look forward to growing our business further," says Alliance chief executive Willie Wiese. "Alliance will continue to focus on optimising our processing network and improving efficiency, in line

with our strategic goal of ensuring livestock farming remains a commercially viable land-use option for our farmers."

He believes Alliance's plant network is well balanced between livestock volumes and processing capacity.

"We understand the importance of Levin to our farmer-shareholders, our people and the region, and we are committed to keeping them informed as this process progresses."

Local Federated Farmers spokesperson Geoff Kane says the deal is positive for the industry.

"We have been very worried about the future of Alliance. We thought it would go under. All other farmer-owned co-ops have had to take on outside shareholders and cash to survive.

"We are very relieved they have found the capital needed."

He says with currently high prices it's a great time to be farmer. The price of beef is twice as high as it was two years ago.

Geoff says Dawn Meats is a great family-owned business with objectives similar to those of Alliance. It is strong in beef, and with Alliance strong in land and mutton it would be a good combination.

"It's great news for Levin, for the staff of the local plants and all farmers, but a lot needs to happen before the deal is finalised."

The deal is subject to shareholder approval. Then there are regulatory requirements that must be met, such as approval from the Overseas Investment Office

A road show will go around the country next month with a vote expected in mid October.

Alliance Group chair Mark Wynne says the board has fully endorsed the deal, which would enable distribution of up to \$40 million to the co-operative.

"Alliance was built by farmers for farmers and has a proud co-operative legacy," Mark says.

"The process we have undertaken on behalf of

our farmer-shareholders to meet our banks' requirements means we are now a much fitter and stronger business.

"However, we need this investment to provide certainty and confidence, and ultimately unlock more value for our farmers."

Mark said Alliance ran out of local options to solve its debt problem.

The transaction needs a minimum of 75 percent shareholder acceptance of those who vote, and more than 50 percent of all shareholders at a special general meeting in Invercargill mid-October. The co-op has 4300 shareholders. If shareholders don't support the plan, Alliance might have to sell assets, close sites and take cost-reduction measures.

The proposed deal follows two years of pre-tax losses of more than \$200 million, which resulted in the banks requiring Alliance to obtain an equity injection of a similar amount.

Initially the co-op looked to its shareholders to contribute through deductions from livestock payments. However, market conditions were not favourable. This was cancelled in December and the search for external capital was launched in February.

The current financial year has seen a dramatic improvement in market prices and is assumed to have seen Alliance return to profit, boosted by internal cost savings and the closure of the Smithfield meatworks in Timaru last year when a \$52.5 million write-down adversely affected its result.

However sheep numbers are declining and the market is currently high.

"In the last 18-24 months, we have implemented a huge amount of change across every aspect of the business. This is an opportunity to lay an enduring foundation that will offer an opportunity for Alliance to thrive and deliver more value to our farmers," Mark Wynne says.





CS LAW
CULLINANE STEELE LAWYERS

P 06 368 9239
E info@cslaw.co.nz

LEVIN OFFICE
28 Queen Street
PO Box 541
Levin 5540

WELLINGTON OFFICE
Level 3, Solnet House
70 The Terrace
Wellington, 6011

www.cslaw.co.nz

Find us on Facebook
[@cullinane Steele](https://www.facebook.com/cullinane Steele)



Looking after you, your family,
and the small print

PIRI'ANGA ALOFA
pacific and community services

New Māori engagement framework

Just how mana whenua and Horowhenua District Council work together from here on has been set out in a freshly adopted Māori Engagement Framework (MEF).

A council report says it has struggled with an ad hoc and reactionary approach to forming relationships with mana whenua and agreed guidelines were needed.

It set up a project advisory group in 2023 consisting of iwi representatives and elected members, who held multiple hui in forming the proposed terms of engagement. The new framework is intended to provide a guideline for how the council engages and resources iwi and hapū.

“A significant driver of this mahi has been the need to address the current inconsistencies in the way council resources and supports engagement with iwi and hapū,” the council report says. “While several existing resourcing agreements are in place, they have largely evolved in an ad hoc manner, resulting in variable levels of support, unclear expectations, and an uneven ability for iwi and hapū to participate fully in council processes.

“This framework represents a shift toward a more principled and transparent approach, one that provides a consistent approach for engagement, while recognising and respecting the diversity of structures, capacities and agreed priorities between each iwi/hapū and council.”

The framework “gives practical expression to our commitment to uphold the principles of Te Tiriti o Waitangi as set out by the Local Government Act, and build mutually respectful relationships with mana whenua,” the report says.



Cr Sam Jennings, who says residents should have been consulted about the framework, and there was still uncertainty around governance and funding.

The MEF passed with a 9-2 majority vote last week. Elected members in favour were Mayor Bernie Wanden, David Allan, Rogan Boyle, Ross Brannigan, Clint Grimstone, Nina Hori Te Pa, Paul Olsen, Jonathan Procter and Justin Tamihana, while Sam Jennings and Mike Barker voted against it.

Sam Jennings says residents should have been consulted. He says while the MEF aims to avoid problems arising from ad hoc resourcing without accountability, there is still uncertainty around governance and funding.

“Council has left these concepts undefined . . . setting us up for future conflict, confusion, and inconsistent application,” he says.

He supports meaningful iwi engagement, but



Cr David Allan, who says the framework is about a better and more coherent partnership replacing the ad hoc arrangements.

says it requires transparency.

“Iwi and hapū have acted honourably throughout this process. They have put forward their expectations clearly and in good faith . . . the failure here lies with council,” he says.

“One of the key goals of this work was to bring clarity and consistency to how we fund and manage engagement with iwi and hapū . . . we’ve introduced a table of remuneration rates for ad hoc engagement, but without tying it to any budget or cap.

“That’s a recipe for financial blow-outs and public backlash.”

He says council currently allocates \$839,000 annually for iwi/hapū resourcing, in addition to cultural impact assessments and project-specific

agreements.

Sam says his criticism is directed at the process, not iwi or hapū.

Mike Barker, who was part of the project advisory group, says the framework allows for unelected representation and co-governance and the community should have been consulted.

“We consult on an issue like berm mowing, but not this?”

In supporting the document, the mayor says for years the council has “operated in the dark”.

“No-one knew what the relationships and arrangements were,” Bernie says. “The whole purpose of getting this framework initiated is to provide clarity and to ensure effective and enduring relationships.”

Deputy mayor David Allan says council has already committed and consulted on forming partnerships with iwi as a key strategy.

“This is about a better and more coherent partnership replacing the ad hoc arrangements which lacked transparency, with coherence and transparency,” he says.

Justin Tamihana says he wanted to celebrate what will be a “living document” that will strengthen future relations and provide clear parameters in “engaging with all mana whenua”.

Jonathan Procter says the framework “is a good thing”. and more iwi and hapū involvement is needed.

“This engagement framework is a living document and not something that will be restricted or constrained and provide a nice colonial lens about how this relationship should evolve over time.”

The adopted Māori Engagement and Partnership Framework can be viewed online in council’s August 6 public agenda.



Free
CURTAIN MAKING
ON THOUSANDS
OF FABRICS*



15% off
SELECTED BLINDS,
SHUTTERS AND
MOTORISATION^

Plus, a free in-home measure and quote!#

Right now at Guthrie Bowron, get FREE curtain making* on thousands of fabrics, and 15% off selected blinds, shutters and motorisation^! Orders must be in by 2nd September 2025, so pop in store and have a chat to our knowledgeable team about your window furnishings.

Inspiration starts here, at your local Guthrie Bowron.

GUTHRIEBOWRON 310 OXFORD ST LEVIN OPP KFC PH 063687133

*Applies to lined curtains only using selected fabrics over \$69.99 per metre when width is under 150cm, or \$79.99 and over per metre for wide width or continuous fabrics. Minimum drop of 160cm and maximum height of 250cm. Excludes Roman Blinds, Eyelet Curtains and componentry. Orders must be confirmed by 2nd September 2025 to be eligible for this offer. Not available in conjunction with any other offer. ^Selected styles and brands only. Please see in-store for details. Orders must be confirmed by 2nd September 2025 to be eligible for this offer. Not available in conjunction with any other offer. #Travel parameters may apply.



Guthrie Bowron

Inspiration starts here.

John Bertrand Collectables Are Buying in Levin, Otaki and Kapiti Coast Next Week

Once again, the gold and collectables buyers from Wellington company John Bertrand Collectables are visiting Levin, Otaki and Kapiti Coast next week. Mr Tony Grant from the company says, "If you are downsizing or wanting to dispose of things because they no longer serve any purpose to you or your family bring them in". "Next week will be a great opportunity to have any items you want to sell assessed by our buyers" said Mr Grant. Particularly wanted are Gold and Silver (in any of its forms) and Collectables such as Coins, Banknotes, War Medals, Old Wind-up Watches and other interesting Small Collectables.

"We are keen buyers, especially of the items in the list below" said Mr Grant. "Nothing is too small for our consideration. We are just as happy buying 1 item as we are buying 1,000 items" he said. The buyers will be in Levin, Otaki and Kapiti Coast next week. (see details below). As Tony Grant points out "If you are in doubt about any items you may wish to sell, bring them along for an instant appraisal."



Mr Anthony (Tony) W. Grant

Fellow of the Royal Numismatic Society of New Zealand Incorporated
Director and Buyer
John Bertrand (Collectables) Ltd
Author of the John Bertrand NZ Coin & Banknote Catalogue

Gold & Silver At Near Record Prices

During these uncertain times we have seen a sharp increase in the price of precious metals. The gold price in New Zealand is at near record levels so gather up all your unwanted items and take them along to the buyers. Tony Grant says "We can buy old gold items in all forms, including Jewellery (Rings, Chains, Brooches etc), Coins (Sovereigns and the like), Alluvial (River Gold), virtually anything, even Gold Teeth! We also need all Sterling Silver including Cups, Tea Services, Cutlery and Old Coins" he said.



Interesting Small Collectables Wanted

The buyers from John Bertrand (Collectables) Ltd, visiting Levin, Otaki and Kapiti Coast next week are happy to look at any interesting items, for example vintage pocket and wristwatches such as Rolex, Men's Omega, Breitling and gold watches etc. Also wanted, pre 1950's picture postcards, Maori and Pacific artefacts, old fountain pens and other small antique or historical items.

"If you have something unusual which you would like to sell, please bring it into one of our venues, we would like the chance to at least have a look at it" said Tony Grant, buyer for the Company. "We will consider anything which may be of interest to a collector" he said.

Some Big Dollars in Early Banknotes

Early New Zealand Banknotes dated before 1932 are currently fetching big money! This is according to Mr Tony Grant, author of the *John Bertrand New Zealand Coin & Banknote Catalogue*. Mr Grant is in Levin, Otaki and Kapiti Coast next week on a buying trip for John Bertrand (Collectables) Ltd and would be very keen to see any of these issues. "We will pay at least \$300 for any undamaged Ten Shilling or One Pound

banknote from a New Zealand trading bank dated 1932 or before.

Denominations of five pounds and higher would be worth from \$700. "Any banknote dated prior to 1900 would be worth at least \$1000" said Mr Grant.

Also purchased are any Reserve Bank of New Zealand pre-decimal issues, especially 50 Pound notes. All overseas banknotes are also wanted, especially early Pacific Island issues.

Collectors Need War Medals

Currently, throughout NZ and the world there is a big demand by collectors for war medals. These cover all wars right through from the New Zealand Land Wars and the Boer War, to the First and Second World Wars and the later Korea and Vietnam conflicts. New Zealand Servicemen and Women first served overseas in the Boer War in South Africa around 1900 and the war medals awarded for this service are needed by the buyers, as are any other Medals from early New Zealand and the New Zealand Wars.

General service medals from both the First and Second World Wars will also be purchased, but as can be imagined these were awarded in fairly large numbers. "If a group of medals has any special award for bravery such as the Military Medal, Military or Flying Cross or other medals for Distinguished Conduct or Meritorious Service, these can add great value to a group" stated Mr Tony Grant, buyer for John Bertrand (Collectables) Ltd. "Many families have old medals, some dating back to early Imperial days, that they are not sure what to do with. These are better off in the hands of collectors who will look after them. We will be happy to look at any war medals whatsoever, just bring them in to venues" he said.

Old Coins Can Toss Up a Rarity

Do you have a bunch of old coins sitting around in your drawers and cupboards? You just never know what rarities may be lurking there. The advice from Tony Grant from John Bertrand (Collectables) Limited is to "bring them in and let us have a look". "No need to sort anything out just bring them in 'as is' and please don't clean them! We can go through coin accumulations and collections fairly quickly" he said. The buyers are particularly keen to buy pre 1946 New Zealand Silver Coins for at least 20 times their face value (more for quantity). "In any event we will buy All Coins," said Mr Grant.

JOHN BERTRAND (COLLECTABLES) ARE BUYING NOW!!

OLD GOLD

- Unwanted Jewellery or Broken Rings
- Gold Chains
- Gold Watch Cases
- Alluvial (River) Gold
- Dental Gold
- Gold Coins
- Gold Racing & Trophy Cups



COINS

- All Gold & Silver Coins
- Gold Sovereigns
- Gold Half Sovereigns
- NZ Silver Coins 1946 & Before (at least 20 times face value)
- Also wanted NZ & World Coins after 1946
- Australian Silver Coins to 1963
- English Silver Coins to 1946
- NZ 1935 "Waitangi Crown"
- USA Coins up to 1964
- Old Collections & Accumulations of World Coins
- Modern Collector's Coins & Sets
- NZ Reserve Bank Sets



No Pennies or Halfpennies Please

BANKNOTES

- NZ & Australian "Trading Bank" Notes pre 1932 (e.g. Bank of New South Wales, Bank of NZ etc)
- Reserve Bank of NZ Pre-Decimal Notes
- Any £20, £50 or £100 Notes
- Hong Kong & Malayan Banknotes
- Australian Pre Decimal Notes
- Australian "Star" Notes
- Early Fijian and Samoan Banknotes
- NZ Traders Promissory Notes (1840s)
- NZ Government Debentures
- NZ Banknotes overprinted for use in Fiji, Cook Islands etc
- Postal Notes
- All other World Banknotes



GOLD & SILVER

- Racing Cups
- A&P Show Cups
- Sports Cups
- Presentation Keys & Trowels
- Show Pieces
- Sterling Silver Tea Sets
- Sterling Silver Cutlery
- Scrap Gold & Silver

No EPNS or Silver Plated items Please

WRIST & POCKET WATCHES

- Gold & Silver Pocket Watches
- Any Rolex Watches
- Omega Gents Watches
- Any Breitling, Jaeger Le Coultre, Vacheron & Constantin, Patek Philippe, or IWC Watches
- Moon Phase Watches
- Chiming or Alarm Watches (Pocket or Wrist)
- Military Watches
- Divers Watches
- All other pre 1950s wind up watches (parts value only)

No Quartz or Battery Operated Watches Please



TOKENS

- NZ & Australian "Tradesmen's" Tokens
- NZ Transportation Tokens
- Railway Passes
- Tram Tokens (not Dunedin Tramways)
- Presbyterian Church Communion Tokens
- Bread Tokens
- Theatre, Cafe, Discount Tokens etc
- Any other tokens relating to early New Zealand

COLLECTABLES

- Albums & Accumulations of Pre 1920s Postcards (used or unused)
- Old Fountain Pens
- Small Chinese & Japanese Antiques
- Maori & Pacific Artefacts

No item too small for our consideration



WAR MEDALS ETC

- The New Zealand Wars & Boer War Medals
- 1st World War Medals
- 2nd World War Medals, Stars etc
- Orders and Decorations
- Korea & Vietnam Medals
- Antarctic or other Polar Medals
- Fire Brigade Medals
- Lodge Medals
- Shooting Medals
- Military Badges and all other Military Medals
- Gold returning Fob Medals or "Tokens of Honour" from residents of small town New Zealand

HISTORICAL MEDALS

- A&P Show- Gold, Silver & Bronze Medals
- Commemorative Medals & Medalets
- Prize Medals (Gold & Silver)
- Sports Medals (Gold & Silver)
- Life Saving Medals
- Shipwreck Medals
- Coronation Medals
- etc, etc, etc



JOHN BERTRAND (COLLECTABLES) LTD OUR BUYERS ARE IN YOUR AREA NEXT WEEK

LEVIN	Thurs 21 Aug	Levin Uniting Church, Andrew Room, 87 Oxford Street	12.30 pm to 2 pm
RAUMATI BEACH	Thurs 21 Aug	Kapiti Uniting Parish Church, Community Hall, 10 Weka Road	3 pm to 4.30 pm
OTAKI	Fri 22 Aug	Otaki Presbyterian Church Hall, 249 Mill Road	9 am to 11 am
WAIKANAЕ	Fri 22 Aug	Waikanae Senior Citizens Community Centre, 28 Utauta Street	12 noon to 2 pm
PARAPARAUMU BEACH	Fri 22 Aug	Ocean Road Community Centre, 45 Ocean Road	2.30 pm to 4 pm



NO APPOINTMENT NECESSARY

Please note: If you sell anything to us, suitable ID is required. Please also bring your bank account details for the deposit of funds for larger purchases.

WE WANT TO BUY - CASH-IN NOW



John Bertrand The Trusted Name In Numismatics Since 1965!



JOHN BERTRAND™
COLLECTABLES LTD

John Bertrand (Collectables) Limited
T: 04 232 9832 • E: info@bertrand.co.nz
Level 1 Harcourt's Building, 215 Main Road,
Tawa, Wellington 5028
PO Box 323, Wellington 6140

Members of the Australasian Numismatic Dealers Association and the New Zealand Numismatic Dealers Association





Stephanie Greenslade as Dorothy in *Half-Time*, on stage next week at Levin Performing Arts Society.
Photo Paul Williams

No afghans for Half-Time performers

By Paul Williams

It’s not all afghans with chocolate icing and walnuts during rehearsals – there is a massive amount of work going on behind the scenes in preparation to get a show to stage at Levin Performing Arts Centre.

Horowhenua Star was given a sneak peek ahead of opening night of *Half-Time* next Friday night (August 22) and was blown away by the effort, teamwork and planning needed ahead of curtain call.

It’s not as easy as just learning a few lines. There’s live music that has to synchronise with the script, lighting that needs to hit the spot, a sound desk keeping a close ear on things, costume, make-up, choreography, and a production team that helps to bring it all together.

And someone needs to bring the afghans.

Show director Lorraine Lepper says the entire cast are a joy to work with – both young and old – and had put in a huge amount of effort for which they should be proud.

“The old adage of never to work with children or animals on stage



really should have a rider that says ‘and seniors,’” she says, jokingly.

There were a few hiccups during rehearsals, but that’s always to be expected, and that’s what they’re for. Lorraine expected it all to come right on the night.

A feature of the *Half-Time* script plot is that it unites theatre

performers of all ages on stage. It’s based on the true story of 10 dancers who audition to perform at the half-time break of a major basketball game.

After making the cut they learn they won’t be dancing styles they are accustomed to, like tap, salsa or swing – instead they have to dance a style they’ve never heard of before – hip-hop.

There are some good performances from the cast. Julian Heyes is brave in his stirring delivery of a solo song as the character Ron, as is Kim Stevensen in her portrayal of Mae.

Stephanie Greenslade is brilliant as Dorothy and cuts some mean shapes towards the end, while the rest of the cast could be proud of the effort and their performances, too.

■ *Half-Time* opens at Levin Performing Arts Centre in Queens Street East on August 22 and runs until September 6.

Council in dark as halt goes on review work

By Janine Baalbergen

A government plan to replace the Resource Management Act (RMA), without having anything in place as yet, has led to it ordering local and regional councils to stop work on reviews of district plans and policy statements.

The reviews are currently mandatory and must take place every 10 years.

The intention to replace the RMA was initially thought to mean councils could decide how to proceed with plan changes in the meantime. However, Chris Bishop, the Minister for Resource Management Reforms, has announced a “plan stop”, which halts the majority of district and regional plan work.

“So the decision how to proceed has been made for us,” says Horowhenua District Council chief executive Monique Davidson.

Chris Bishop says the RMA “has crippled New Zealand for decades, and the government’s planning system reforms are well under way to make it easier to get things done in New Zealand.”

“We’ve already made a series of quick and targeted amendments to provide relief to our primary sector and passed the Fast-track Approvals Act to speed up the consenting process for projects with regional or national significant benefits.

“We’ve also opened consultation on sweeping changes to the regulations that sit under the RMA, and next month our second RMA Amendment Bill is expected to pass into law, which will make important changes in the short term to make it quicker and simpler to consent renewable energy, boost housing supply, and reduce red tape for the primary sector.”

Later this year, the government will introduce two new acts to replace the RMA – one to focus on land-use planning and the second to focus on the natural environment.

The new system will provide a framework making it easier to plan and deliver infrastructure, and protect the environment, the minister says.

However, Monique says there is still a lot councils don’t know.

“The government intends to completely repeal the RMA and replace it with two new pieces of legislation – a Planning Act and a Natural Environment Act. These changes are extensive, representing a different overall purpose to resource management than the RMA and setting out a different system for preparing planning documents – namely, a single regulatory plan per region jointly prepared by the different councils within a region. The matters these plans will be able to include are likely to differ to the RMA.

“The principles for replacing the RMA were outlined in the coalition agreement, with further detail becoming available in March 2025 when an Expert Advisory Group (EAG) appointed by government released a ‘blueprint’ of recommendations for the new resource management system.

“Cabinet then released their own recommendations on the blueprint recommendations. There are no draft bills available yet, so there is a lot we still don’t know,” Monique says.

She says there are a few exemptions to the “plan stop change”, which she anticipates will apply to Plan Change 6A (meaning this plan change will continue).

“Beyond PC6A we are unlikely to initiate any other District Plan changes.

YOUR LOCAL ROOFING CONTRACTOR

Call for all your roofing solutions

FREE QUOTES

Moss kill

Repairs

Reroofs

Spouting

Chimney removal

Bruce 027 932 3754

bprobbie54@gmail.com

PURE PRESSURE

PROPERTY WASH

- Residential - Commercial - Industrial
- Soft wash
- Spider treatments
- Roof cleaning and treatments
- Gutter cleaning and clearing
- Driveways, paths and concrete patios
- Decks, fence and gazebos
- Fully insured

Locally owned and operated since 2021

Gold card discounts

Contact: 020 455 6007

e: purepltd@gmail.com • purepressure.co.nz

Wizardly talent in Hype's show

YOUNG PERFORMERS from across Horowhenua are set to showcase their skills in *The Wizard of Oz – Youth Edition*, presented by Hype Theatre at Waiopahu College Auditorium, Levin.

The much-anticipated show highlights the creativity, dedication and passion of the region's youth.

Now in its 11th year, Hype Theatre has spent the past three years operating as a fully independent organisation in the Levin community. Founded by Linda Buckley, Hype was born from her vision to make the dramatic arts accessible to every child in the region.

Linda's drive has seen her run multiple fundraising workshops, secure grants and sponsorships, and volunteer countless

hours to ensure all young people have equal opportunities in theatre.

"Our region's youth deserve to have Hype drama, because to many of us, Hype matters," Linda says. "We love sharing our passion and watching children grow into confident young stars through opportunities and ongoing support. Partnered with our Musical Director, Ann-Marie Stapp, we feel it's a truly rewarding experience – paying it forward to our community's children."

At the helm of *The Wizard of Oz – Youth Edition* is director Myah Snow, for whom this is the 17th musical of her career but her first time in the director's chair. A Hype Theatre original – joining at age 8 – Myah has been involved in seven Hype

musicals and was part of the creative team in 2023 as choreographer for *The Addams Family (Young @ Part)*.

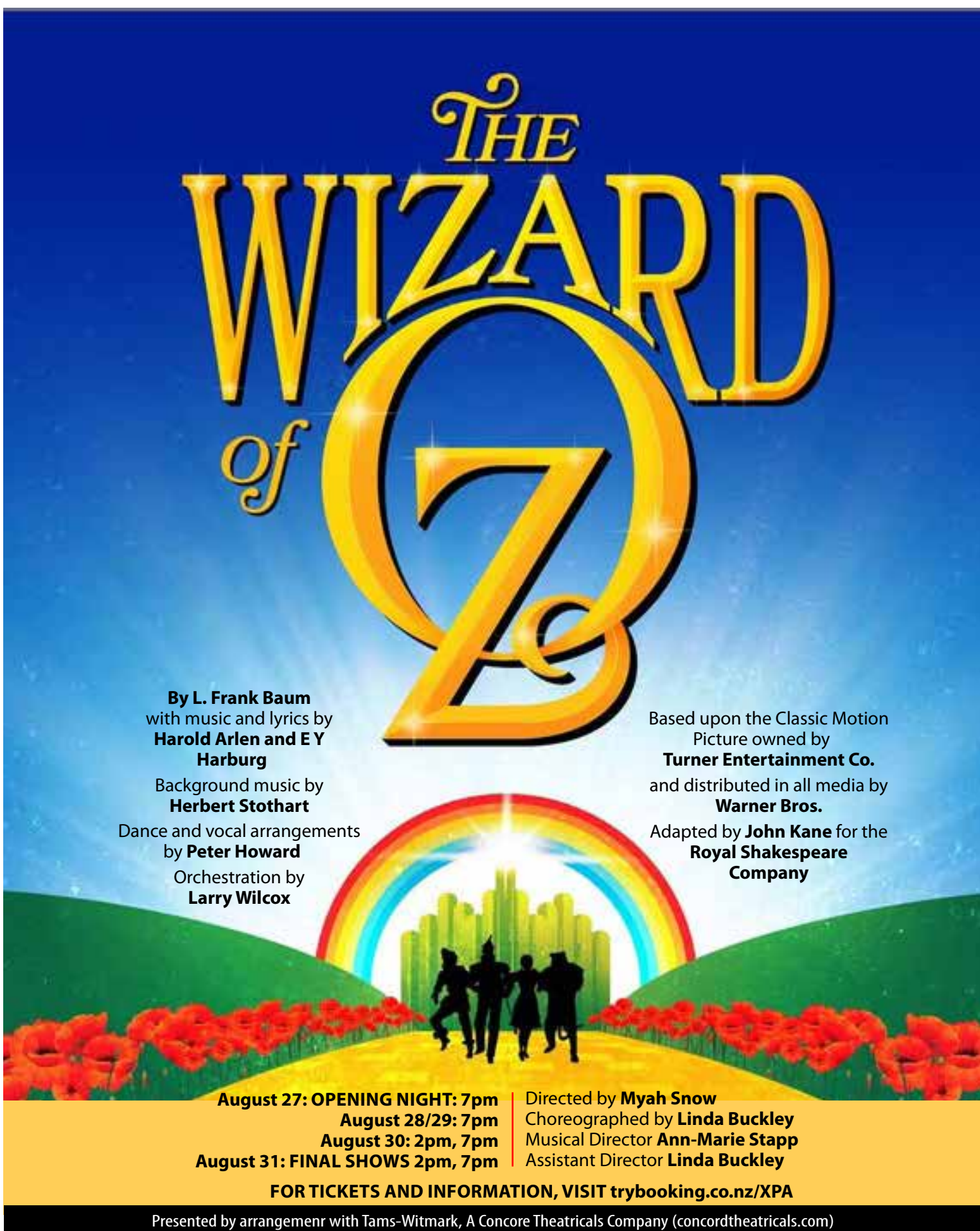
"While performing is exciting, directing gave me a deeper connection to the entire production," Myah says. "I enjoyed shaping the vision, guiding the cast, and seeing everything come together from behind the scenes. Watching the performers bring their characters to life was inspiring, and knowing I helped make that possible was truly fulfilling."

Myah is no stranger to accolades. She won Best Actor in a Male Role (Youth) at the 2025 Regional Theatre Awards for her portrayal of SpongeBob in *The SpongeBob Musical – Youth Edition*, and in 2024, she received Best Supporting

Actor in a Female Role (Youth) for playing Alice in *The Addams Family*. She was also nominated for choreography in the same production and honoured with the Horowhenua District Council Youth Excellence Award for Excellence in the Field of Art and Culture in 2024.

Alongside her community theatre work, Myah has excelled in college performing arts, being named Outstanding Individual Performer of 2024. She plans to continue her passion by studying for a Bachelor of Performing Arts next year.

The Wizard of Oz – Youth Edition promises a heart-warming journey down the yellow brick road, powered by the region's rising stars and the community spirit that keeps the arts thriving.



THE WIZARD of Oz

By **L. Frank Baum**
with music and lyrics by **Harold Arlen and E Y Harburg**
Background music by **Herbert Stothart**
Dance and vocal arrangements by **Peter Howard**
Orchestration by **Larry Wilcox**

Based upon the Classic Motion Picture owned by **Turner Entertainment Co.**
and distributed in all media by **Warner Bros.**
Adapted by **John Kane** for the **Royal Shakespeare Company**

August 27: OPENING NIGHT: 7pm
August 28/29: 7pm
August 30: 2pm, 7pm
August 31: FINAL SHOWS 2pm, 7pm

Directed by **Myah Snow**
Choreographed by **Linda Buckley**
Musical Director **Ann-Marie Stapp**
Assistant Director **Linda Buckley**

FOR TICKETS AND INFORMATION, VISIT trybooking.co.nz/XPA

Presented by arrangement with Tams-Witmark, A Concore Theatricals Company (concordtheatricals.com)



Director of *The Wizard of Oz – Youth Edition*, Myah Snow.



Hype Theatre founder Linda Buckley, who is also choreographer and Assistant Director for show.



Musical Director Ann-Marie Stapp.

Horowhenua Star begins its series of candidate profiles for the 2025 local body elections. We will run a new set of profiles each week. Next week, the other seven candidates contesting the Levin Ward. Note the information and photographs have been requested without direction as to content. Readers are urged to find out as much as they can about the candidates so they can make an informed vote.

LEVIN WARD (5 vacancies, 14 candidates)

CATRIONA FINAU McKAY

I moved to Horowhenua in 2016 and am proud to call it home. I stand for: Inclusive – A strong and safe community; Sustainable – Smart, responsible rates spending; Growth – Supporting our local businesses. I bring: Energy - I will work hard to get the investment we deserve from central government. Collaboration – I have worked alongside our business and community leaders and know that I will bring valuable experience and a new perspective. I have a strong track record – from commercial and corporate law; executive public sector roles; and until January, as the CE of our District’s economic development agency.



MIKE BARKER

Thank you for the opportunity to represent you all for the last three years. I was born and bred in the Horowhenua, have lived here for the last 65 years, and have operated a successful small business here for the last 38 years. In representing you, the ratepayer, over the last three years I have learned a lot about my community and myself. I am passionate about democracy and if chosen again to represent you, I would continue to weigh any decisions the council makes against what I believe are the most important aspects of democracy: Fairness, Equality, and Transparency.



TONY COLLIS

I’m proud to be part of five generations of the Collis family who have called Horowhenua home. In 2006, I launched a Trust with a team of locals, establishing Hinemoa House serving as the founding chairman. In 2011, with others I established another Trust birthing our food security programme, Hope Hub, which continues to make a meaningful difference for families doing it tough. I also serve as the founding pastor of Hope Centre in Levin. I have learnt that little teams can make a big difference. ‘Vote Collis’ and I will be on your team, listening, advocating and serving.



GLEN STEVENSON

Hi, I’m Glen and I moved up to Levin from Wellington. Living in the area I have seen some issues which need to be addressed. Levin is incredibly progressive. It needs future proofing and cost changes which will take it into the future. I am a problem solver with an analytical mind and would love to represent the people of Levin. The happiness of others is a passion of mine and I believe a vote for me is a Fresh Start. Thank you.



JO MASON

I am proud to stand for council. We live in a great district. Like many councils we have the challenge of rates affordability, balancing wants with needs while faced with pending changes. I offer the district my experienced perspective, previously serving 3 council terms. A new focus over the last term but still locally active has created the space for me to again bring my focus to decision making. Long term resident of Levin with a good understanding of local issues. A positive attitude and strong listening skills, confident to have the tough conversations. Your thoughtful and dependable candidate.



ALAN YOUNG

Thanks to those who have encouraged and supported me, I’m proud to be seeking re-election to the Horowhenua District Council. I’ve served long enough to offer experience, but not so long that I’m stuck in old ways. With stronger governance skills, local business experience, deeper connections, and a clearer understanding of what’s ahead, I’m ready to really lock in and influence better outcomes. I bring a youthful perspective, value good communication and community engagement, and stay active through sport and performing arts. I’m focused on practical, future-focused policy and keeping our district affordable, inclusive, and prepared for the challenges ahead.



KATRINA MITCHELL-KOUTTAB

I bring over 35 years of community experience, having worked in and alongside councils, emergency management, NGOs, and now running a local senior fitness business. I believe in fair, transparent, and equitable decision-making. I want to rebuild trust, strengthen community voice, and continue the good work Council has done – while improving governance, transparency, and leadership from the top. Council must work for everyone: businesses, families, our environment, and frontline staff. I’m not here to tear down, but to build a more inclusive, sustainable, and successful Levin. I bring no self-interest, only a desire to serve and uplift our whole community.”



HEADS UP: HOROWHENUA COLLEGE

Te Whero – college haka for everyone to enjoy

Te Whero is the name of our college haka. It was written by Matua Chris Wilton, who teaches at Horowhenua College, and Matua Sam Doyle in 2001.

Te Whero was originally written for our 1st XV rugby team, but over time it has been adopted as our college haka for everyone to enjoy. Te Whero means “The Red”. It refers to the red colour of our college uniform and this proudly represents who we are. In our haka we declare that Horowhenua College is cloaked with red, and that our ability and unity as one will grow and develop and expand. Te Whero also declares our connection to our mountain, Tararua, that sources our sacred lake, Punahau. In performing Te Whero we acknowledge all those who have gone before us at Horowhenua College and who have paved the way for us who are here now, and the responsibility we now play in upholding and growing the honour of Te Whero (our uniform) for the next generation.

The students and staff of our college know that Te Whero is our haka and that it is unique in the world. It is performed in all sorts of settings – to acknowledge, to show respect, to welcome, to challenge, to support. Our house haka competition was held recently. This is a time for the houses to perform Te Whero and to win the Wilton Whānau Trophy, Te Whero Taonga. Congratulations to Ngaio, the 2025 winners. Although the competition sees house competing against house, the part of the day I most enjoy is at the end when all four houses – students and staff – come together for one last (and very large) haka to thank and acknowledge the judges. It’s when we are all together that Te Whero is at its best, and this, I think, reflects how Te Whero has become a much loved and respected part of who we are at NUA. – Ngā mihi, Tofa soifua, Kind regards, Grant Congdon, Principal



EXPRESSWAY THOUGHTS: ANTONY YOUNG

Expressway cost blow-out as bureacracy creates a monster

I’ve been a strong advocate of the Ō2NL expressway, but have to admit the cost blow-out is alarming.

It’s hard for any of us to comprehend how the costs are so high, that can double and then some from the initial estimate.

Having sat in the Environment Court proceedings for the resource consenting, here are a few of my observations.

There are a ton of allowances, submissions and extras that get thrown in for NZTA Waka Kotahi



to get their plans signed off. They include:

- The build of a shared pathway for cycles and walkways that goes alongside the expressway – it’s a nice-to-have, but that seemed an extravagant deal breaker to get

approval. Users presumably won’t be tolled.

- Submissions by the Department of Conservation, Forest & Bird and others to secure lizard enclosures, rehoming snails and halting of construction in certain months to allow for certain birds to breed.
- Restoration of fish and “at-risk” fauna and flora.
- Capture and relocation of “not threatened or “at risk” invertebrate species, including wainuia, peripatus, Auckland tree wētā, Wellington tree wētā, cave wētā and stick insects.

- Partnerships with Muaupoko Tribal Authority, and 11 separate hapū.
- Consultations and approvals by regional councils, local councils and their legal teams.

I had to endure three hours of hearing a submission by the various equestrian groups pushing for a bridle path (for horses). This was eventually denied.

There is, of course, the purchase of more than 200 properties. Owners are only paid market price, just like if you sold it on the market, but of course they had no choice.

Costly consultants paid \$430/hour were employed to negotiate on both the owners’ and NZTA’s behalf.

Consultants have been on the clock for at least nine years, even before the project breaks ground.

I have no issue with the above parties involved advocating for their interests or supplying support to the plans. But the bureaucracy has simply created a monster that just delivers eye-watering costs to the taxpayer and ultimately the residents, who will be paying over a lifetime.

■ Antony is chair of Horowhenua NZ Trust

CITIZENS ADVICE: GINNY WILLIAMS

A MATTER OF LAW: JOSEPH CHAGGER

Issues can arise when an employee leaves



From time to time there are workplace issues around payments for hours worked.

This can become evident when moving on to new employment. As with many employment issues there are rights and responsibilities for employer and employee.

From March 13, 2025, it became a crime for employers to deliberately not pay their workers what they were legally owed, unless they had a good reason. This includes pay set out in employment agreements and under laws like the Minimum Wage Act and Holidays Act. When anyone resigns from a job, there is an entitlement to a final pay.

However, you must also give the correct notice if you resign.

As long as you give your employer enough notice of your leaving, your employer must pay you to the end of the notice period. The amount of notice you need to give should be in your employment agreement. Your employer should also pay you till the end of the notice period if they asked you to stop coming to work before the end of the period of notice.

If you left your job without giving notice, or without working to the end of the notice period, your employer must pay you up to the end of your last day at work. Your employer may be able to deduct some of your pay.

If you did not give enough notice before leaving your job, or you gave notice but did not work to the end of the notice period, your employer might be entitled to make a deduction from your pay. But they can only do this with your written consent.

“Written consent” is when all of the points below are true:

- Your employment agreement contains a clause allowing the employer to withhold pay or make penalty deductions from your final pay if you do not give the required notice.
- You were able to get independent advice about your employment agreement before signing it.
- You signed the agreement.

If you require more information on any matter, contact Levin Citizens Advice Bureau 06 368 9521 or levin@cab.org.nz

■ Ginny is chair of Citizens Advice Bureau Levin

Many team ‘caps’ make a trust work

Trusts today still play a vital role in asset protection, asset management and estate planning.

At its core, a trust involves several roles, each playing a key part in running a trust smoothly, like a well-captained sports team. The key roles include:

The settlor – the “head coach” of the trust. The settlor creates the trust and transfers assets into it. They establish the trust’s terms, decide who the beneficiaries and the trustees are, and outline the reasons for the trust. Their intentions shape how the trust will operate, and usually they retain some input in running the trust.

The trustees – the “forwards” of the trust. These people (or companies) are responsible for managing the trust’s assets – usually according to the settlor’s wishes, but they have duties to follow the trust deed’s terms and the provisions of the Trusts Act 2019, to act properly, honestly and in good faith to further the trust’s purpose. Unless otherwise stated, they must also act with a general duty of care, invest prudently, not self-benefit, avoid conflicts of interest, and act impartially, among other duties. The



trustees must be trustworthy, as they hold “legal” ownership of the trust assets and responsibility for proper trust management going forward.

The appointers – the “captains” of the trust. The appointers have ultimate control over a trust, as they can appoint and remove trustees. If a trustee dies, loses capacity, or acts against the beneficiaries’ best interests, the appointers can remove them and bring on replacements. The appointers oversee the trustees’ actions and make sure the trust is running properly according to the settlors’ wishes, the trust’s terms and the Trusts Act. In this way, they add further security to the trust.

The beneficiaries – The “impact scorers” of the trust – the people or entities that receive the benefit of the trust fund.

Discretionary beneficiaries have a hope or expectation to benefit from the trust (through income or capital) during its lifetime; final beneficiaries have a vested interest in the trust assets once the trust finishes. Unlike an estate, beneficiaries can continue to receive trust assets long after the settlor has passed away. Beneficiaries now have more rights under the Trusts Act, including a presumption they will receive basic trust information, and further information on request. They can challenge the trustees’ actions.

Each role is distinct, and clarity can prevent misunderstandings and legal disputes – but it is rarely straightforward. These roles can conflict – a trustee can also be a beneficiary, which can create conflicts of interest or self-benefitting. Each role must be distinctly understood, to avoid complications and ensure proper administration.

If you are unsure whether the roles in your trust are clearly defined and understood, contact CS Law on 06 368 9239. We are here to look after you, your family, and the small print.

■ Joseph is a solicitor with CS Law

THE ELECTORATE: TIM COSTLEY, MP

Giving children our very best matters

There are few things more important to the future of our young people than education.

Giving our children the very best matters, and that’s why we’re proposing to replace NCEA with new national qualifications to ensure New Zealand students have the knowledge and skills they need to succeed.

Current evidence shows 49 percent of parents and 40 percent of students reported not understanding NCEA.

Too many of our kids make up their qualification through a random selection of credits and standards that aren’t coherent, ambitious or taking them on meaningful pathways into future study or employment.

Further, we’re actively disincentivising participation: last year alone more than 250,000 exam papers were left blank because students didn’t deem participation necessary.

National is ambitious for our children. We have introduced an hour-a-day in reading, writing and maths, we’ve banned cell phones, we’ve brought back phonics,



delivered over 800,000 new maths books and resources to classrooms, called time on open plan classrooms and got back to basics with a focus on quality teaching and learning.

Now we want secondary qualifications that New Zealand can be proud of.

New qualifications will be internationally bench-marked, easier to understand, with clearer vocational pathways, a focus on foundational skills, and more consistent in how we assess students.

- The key changes:
- NCEA Level 1 would be removed, allowing Year 11 students to stay at school all year and nail the foundations.
 - NCEA Levels 2 and 3 would be replaced by two new qualifications: the NZ

Certificate of Education for Year 12, and the NZ Advanced Certificate of Education for Year 13.

- We want to make the qualifications clear, not complex, so we’re going back to As, Bs and Cs and a mark out of 100.
- Assessments will move from a messy standards-based system to a subject-based approach based on a consistent, internationally benchmarked national curriculum.

- Students will be required to take English and maths at Year 11, along with at least five subjects in Years 12 and 13, needing to pass at least four to gain each certificate.

These changes would take effect for students currently in year 8. Anyone already at college (year 9 and up) will stay with the current NCEA system.

Consultation on the proposal is open until September 1, with final decisions due by the end of this year.

We’re working hard on education because the future of our children, and our country, depends on it.

■ Tim is the Ōtaki electorate MP

A week Labour would prefer to forget

The Labour Party should want all references to its activities in last week’s media removed from public records.

Not since the politically crazy weeks preceding the 2020 general election when National ran through three leaders in quick succession has one of the major parties been so humiliated.

First it was the Treasury revealing that much of the \$66 billion officially spent as a response to Covid by the Ardern government was in fact spent on projects and policies not related to the pandemic and its impact. Secondly, Treasury reported that it had recommended at the time against such a stimulus of the economy.

Treasury’s third blow to Labour was setting out how this level of expenditure had led to what it terms the “structural deficit” in the economy – essentially a level of indebtedness that can only be eliminated by years of national income exceeding expenditure to enable faster debt repayment.

Almost as though this destruction of Labour’s fiscal management capability was not sufficient humiliation, the next day Education Minister Erica Stanford disclosed that efforts she had made to bring Labour into the change process for NCEA had been rebuffed by its education spokesperson, Willow-Jean Prime. That several attempts were made before a firm rebuff came from the Opposition made the situation more damning than a clear early rejection might have done.

All this seemed bad enough for Labour. But it is compounded because of the implications

for the party leader, Chris Hipkins. He was a senior figure and became part of the triumvirate at the top of the Labour tree directing the Covid response, along with Prime Minister Dame Jacinda Ardern and Finance Minister Grant Robertson.

No amount of verbal ducking and weaving can be used to evade the responsibility he carries for the plight of the New Zealand economy today.

He was also a part of the education debacle, as his office informed Stanford of Prime’s position. And he is tied even more closely to it because of stated support he had expressed for major party bipartisanship on matters of governance in which an administrative framework and not ideological differences are in play.

Subsequent statements that Willow-Jean Prime had made the wrong decision seemed like “hanging her out to dry”. Public words of support, followed by backroom advice that it was a wrong decision, may have better served his colleague.

Labour’s leadership is rapidly becoming an issue of “not if, but when” Hipkins will be replaced. The party seems in a position not far removed from that of National six years ago when the call went out to find a fresh face for the leadership. Prime Minister Christopher Luxon, then chief executive of Air New Zealand, emerged as the new person.

The question for Labour is to whom it

Labour’s leadership is rapidly becoming an issue of “not if, but when” Hipkins will be replaced. The party seems in a position not far removed from that of National six years ago when the call went out to find a fresh face for the leadership. Prime Minister Christopher Luxon, then chief executive of Air New Zealand, emerged as the new person.

should turn. It effectively shut out Shane Jones, whose growing impatience with what Damian O’Connor termed the “gaggle of gays” influencing the Labour caucus in the teen years of the 21st century, was becoming well known.

And this was at a time when even Sir John Key had signalled that he saw Jones as a formidable potential leader of the Labour Party.

There is no clear-cut successor to Hipkins. Michael Wood, former Roskill MP and now a union advocate, aspires to get back into Parliament. His reign as a minister in the Ardern government was, however, blighted by personal administrative oversights that suggested ambition might be outrunning ability.

No other figure among Labour’s front bench team stands out as a potential prime minister in waiting.

Outside of Parliament, apart from Wood, is Craig Rennie of the Council of Trade Unions. He has the depth of knowledge, persona and party contacts to be a strong contender. He sits, along with Wood, in the party’s administrative ranks.

But his association as an adviser to Grant Robertson during the period of “blow-out” expenditure that caused angst in the Treasury, counts against him until the fiscal deficit recedes as a major factor in Kiwi politics.

These two could be parachuted through the list into Parliament as future prospects. But even in the absence of such fresh faces, Hipkins cannot be sure he will lead Labour into the next year’s election.

National’s Simon Bridges thought he was safe from plotters until in quick succession his party turfed out himself, Todd Muller and Judith Collins before settling on Luxon.

Within National today, Simeon Brown, Erica Stanford and Chris Bishop all come through as potential alternatives to Luxon.

Parliamentary jousting suggests Nicola Willis, now number 2 to Luxon in party ranks, wins prizes for administrative, rather than political acumen. The worry point for National’s leader would seem to be a dip in party support to below 30 percent – a level that looked uncomfortably close in this week’s Taxpayer-Curia poll.

The Beehive could thank Chloe Swarbrick of the Greens for a diversion of attention from this less than stellar rating. The Swarbrick claim that her party could lead the next government coalition of the left was unlikely to cheer Hipkins, but it did draw headlines.

■ Bruce has been an economics and business editor, and a foreign correspondent in Washington, London and Hong Kong.



POLITICS

BRUCE KOHN



DREAMING OF EUROPE IN 2026?

THE BEST ADVENTURES START WITH THE RIGHT PLANNING

If Europe is on your radar for 2026, now’s the perfect time to start turning those dreams into reality. With fantastic early deals and my first-hand travel expertise, I can take care of the details so you can enjoy the journey stress free.



Vanessa Kirkman
Ōtaki’s Leading Travel Agent



BOOK NOW



More information
021 745 903



Visit website
travelustnz.com

Community Connection

Issue 222 AUGUST 2025

Horowhenua
DISTRICT COUNCIL



Message from the CE

Kia ora Horowhenua,

This year's local elections have kicked off with a bang with 42 nominations! It's fantastic to see so many people stepping forward for a role to represent

our communities. Whether you're standing, voting, or cheering from the sidelines, thank you for being part of it.

As part of this year's elections, you'll also be asked to vote in a binding referendum on the future of Māori Wards. The Horowhenua Māori Ward was established in 2021 after community engagement, and in September 2024, Council voted to retain it. A law change last year means councils with Māori Wards not established by a poll must either remove them or hold a referendum. We chose the latter because we believe this decision belongs to the community. This is your opportunity to help shape how our district is represented in the years ahead. The result will be binding from the 2028 election, so I encourage everyone to get informed and have their say.

Recently, NZTA signed construction contracts with the North and South Alliances to build the Ōtaki to North of Levin highway. This confirms their commitment to the project, with construction starting in October. The community can expect more large earthmoving vehicles along the route as preparations begin. Recent accidents on the current highway highlight the need for this safer, faster route, which will reduce traffic through our towns and create new opportunities for Horowhenua.

Last week Council unanimously adopted a Water Services Delivery Plan, the first product of our partnership with Palmerston North City and Rangitikei District Councils under the Government's Local Water Done Well policy.

This is important because providing water services, including ongoing asset upgrades is expensive and accounted for more than 85% of the rates increase

this year. Teaming up with the other councils is estimated to save the average Horowhenua household between \$195 and \$300 per year by 2027/28 through economies of scale and improved service model efficiencies. There is little doubt that the three councils working together can deliver a long term financially sustainable water services model, while keeping a strong local voice in decision-making. We were the first to vote on the plan, and the other two councils are doing so this week. We'll keep you updated as this important work progresses.

Last week, Council formally adopted the Iwi and Hapū Relationships Framework, a significant step in outlining Council's approach to fostering and strengthening our relationships and working in true partnership with iwi and hapū. Developed over two years, it sets out how we'll walk alongside each other and the opportunities iwi and hapū will have in supporting decision-making through meaningful engagement.

We're also thrilled to share that Robert Harris will soon open in Foxton at Te Awahou Nieuwe Stroom. The café will bring a fresh buzz to the space, serving up great coffee, delicious treats, and warm hospitality. It's fantastic to see strong local investment breathing new life into this much-loved community hub.

And don't forget, Civic Awards and Youth Excellence Award nominations are open. If you know someone making a difference, now's the time to put their name forward. You can find all the details on our website. So are the community grants and funding, don't miss the opportunity to bring your ideas to life.

If you're looking for a weekend outing with the kids or the dog (bring a leash!), head to Prouse Bush Reserve in Levin, just minutes from town and perfect for a walk and a picnic.

Until next time,

Monique Davidson

Monique Davidson
Chief Executive

Council Meetings

- 18 Te Awahou Foxton Community Board Public Forum**
Monday 18 August 2025, 5.30pm to 6pm
Foyer, Te Awahou Nieuwe Stroom, 92 Main Street, Foxton
- 18 Te Awahou Foxton Community Board Meeting**
Monday 18 August 2025, 6pm to 8pm
Ngārongo Iwikātea Room, Te Awahou Nieuwe Stroom, 92 Main Street, Foxton
- 10 Council Public Forum**
Wednesday 10 September 2025, 10.15am to 10.45am
Council Chambers, Horowhenua District Council, 126 Oxford Street, Levin
- 10 Horowhenua District Council Meeting**
Wednesday 10 September 2025, 11am
Council Chambers, Horowhenua District Council, 126 Oxford Street, Levin
- 17 Community Funding and Recognition Committee**
Wednesday 17 September 2025, 10am to 12pm
Council Chambers, Horowhenua District Council, 126 Oxford Street, Levin

Meeting dates and times are subject to change. Please refer to horowhenua.govt.nz/Council/Council-Meetings for the full meeting schedule, minutes and agendas.

Are you eligible for a Rates Rebate?

Apply Now

Rebates of up to \$805 may be available to eligible residents

horowhenua.govt.nz/RatesRebate

Horowhenua
DISTRICT COUNCIL

Age on the GO

Call for Stallholders

Be part of our popular expo for older people on Friday 10 October at Horowhenua Events Centre.

Free stalls for community groups, \$100 for businesses.

Register by 19 September

horowhenua.govt.nz/AgeOnTheGo

FREE EVENT

Horowhenua
DISTRICT COUNCIL

In the Works

You'll see them out there, come rain or shine.

Our Local Waters team and roading contractors are constantly at work – maintaining our water network, fixing roads and footpaths, clearing slips, and keeping the district running smoothly.

These jobs require skill, patience, and often a cold trickle of rain down the back of the neck. So next time you see them, give them a wave – they'll really appreciate it.

Here are just some of the things our teams have been up to lately:

Bergin Road, Foxton

Sealed pavement maintenance continues, with Higgins carrying out edge break repairs to extend the life of the road and ensure a smoother drive.

Waitārere Beach Road

We've started work on renewing the retaining wall near Achilles Avenue after monitoring showed movement over a short period. The new wall will improve stability, help manage sand drift, and keep the footpath safe for everyone.

Other works

- The rural mowing programme is progressing well, with around 70% of the district completed. The mower is now heading north along the western side of the district.
- Footpath maintenance completed on Barry Curtis Place and Heather Street, Levin.
- Fine weather has enabled our contractor to carry out unsealed pavement maintenance, addressing potholes on Gladstone Road, Poads Road, and Hogs Road, Kuku.



BERGIN ROAD, FOXTON



WAITĀRERE BEACH ROAD

COMMUNITY AT HEART



GRANTS & FUNDING

Got a great idea for your community?

Horowhenua is full of people with big hearts and bold ideas – and now's the time to bring those ideas to life.

Council Grants and Community Funding are open now, and there's still one more drop-in session if you want a bit of help with your application:

Tuesday 26 August, 3pm to 4pm

Te Takeretanga o Kura-hau-pō, Levin. Or get in touch with our Community Development team:

@ community@horowhenua.govt.nz

☎ 06 366 0999

🌐 horowhenua.govt.nz/Grants



Get ready for a fun, ice-cool skating experience!

📍 Te Takeretanga o Kura-hau-pō (Youth Space), Levin
Wednesday 27 August - Sunday 31 August

🎫 Tickets and session times, available online at [eventfinda](https://eventfinda.govt.nz). Scan the QR Code or search Ice Skate Tour - Levin - Eventfinda

Everyday Legends Live Here




HOROWHENUA CIVIC AWARDS
Celebrating Community Champions


HOROWHENUA YOUTH EXCELLENCE AWARD
Celebrating Exceptional Rangatahi

Know someone making a real difference in our community?

Whether they're a long-standing volunteer or a young person achieving great things, we want to celebrate them.

For full criteria and to submit your nomination:

- 🌐 horowhenua.govt.nz/CivicAwards
- 🌐 horowhenua.govt.nz/YouthExcellence
- ☎ (06) 366 0999

Nominations close 7 September 2025

Horowhenua
DISTRICT COUNCIL


Te Takeretanga o Kura-hau-pō
Horowhenua Culture & Community Centre

Horowhenua
DISTRICT COUNCIL



» 115B Bartholomew Road **LEVIN**

DEADLINE SALE

3 2 2 1

A hidden gem! Easy living

Tucked away on a private rear section, this light-filled and inviting home is the perfect match for first home buyers or active retirees seeking comfort, space, and convenience.

A bright, open-plan living area enhanced by charming chapel ceilings that create a wonderful sense of space. The living flows effortlessly to a sunny north-facing deck, plus there is a verandah, ideal for relaxed morning coffees or entertaining friends.

The kitchen is open to the living area, making it easy to stay connected with family or guests. It features excellent bench space, ample storage, and a handy breakfast bar, perfect for casual dining or sharing a morning chat. The master bedroom offers a peaceful retreat with its own walk-in robe and ensuite.

Deadline Sale (Unless Sold Prior) Closes 1pm, 28 August 2025, Wilton & Co, 530 Queen Street East, Levin

Ref : www.wiltonandco.nz/WILO1939
OPEN HOME SUNDAY 11.45AM-12.15PM

Adriana Wilton

0297766902
adriana@wiltonandco.nz



» 39 Bristol Street **LEVIN**

DEADLINE SALE

4 2 2 1

A cut above - Built ahead of its time

From the moment you step through the solid timber door, it's clear this is no ordinary home. The ground floor offers generous open plan living and dining, enhanced by floor to ceiling double glazed windows that bathe the space in natural light. Step effortlessly out to the rear patio - the perfect place for your morning coffee or laid back alfresco meals. The stylish kitchen is an entertainer's

dream with bifold windows opening directly to the patio, a feature breakfast bar, double ovens and ample storage. Also on this level is an office or fourth bedroom. Ascend the architectural staircase - or take the lift - to the upper level where you will find three generous bedrooms including the master with a tiled ensuite. Set on a low maintenance section, just minutes from the town centre.

Deadline Sale (Unless Sold Prior) Closes 1pm, 28 August 2025, Wilton & Co, 530 Queen Street East, Levin

Ref : www.wiltonandco.nz/WILO1941
OPEN HOME SUNDAY 2PM-2.30PM

Adriana Wilton

0297766902
adriana@wiltonandco.nz



» 26 George Street **LEVIN**

BEO \$659,000

3 1 1 1

The complete package

This beautifully renovated home sits proudly on a generous 880m2 section and effortlessly blends timeless charm with contemporary upgrades. Thoughtfully transformed throughout, it retains the warmth of native timber while embracing modern standards of comfort and efficiency.

Nearly every aspect of the home has been updated - re-gibbed walls, new insulation in the walls, ceiling, and underfloor, plus

upgraded electrical wiring, plumbing, and stylish new light fittings and a near new roof. A heat pump ensures year-round comfort.

Three generously sized bedrooms, a sleek new bathroom complete with a luxurious soaker bath, and a modern kitchen designed for everyday living and entertaining. Outside you will find a fully fenced backyard - private, secure, and perfect for children and pets.

Ref : www.wiltonandco.nz/WILO1910
OPEN HOME SUNDAY 12.45PM-1.15PM

Adriana Wilton

0297766902
adriana@wiltonandco.nz



» 79 Kawi Road **LEVIN**

BEO \$599,000

3 1 2 1

Family living - prime location

Whether you're upsizing, relocating, or simply seeking a peaceful setting with room to grow, this home delivers. With its sought after location, generous proportions and welcoming vibe, it's a rare find for families, professionals, or retirees alike. Enjoy seamless indoor, outdoor flow with access from the living room to a private rear courtyard and lawn - perfect for BBQs and playtime, as well as a sunny front

balcony overlooking picturesque farmland, the ideal spot for your morning coffee or evening unwind. Inside be welcomed by native timber floors that add warmth and style to the generous open plan living area, while plush new carpet provides comfort underfoot in the three spacious bedrooms. At the heart of the home, the updated modern kitchen offers great functionality.

Ref : www.wiltonandco.nz/WILO1878
OPEN HOME SUNDAY 1.15PM-1.45PM

Adriana Wilton

0297766902
adriana@wiltonandco.nz





» 37 Rugby Street **LEVIN**

2 1 1

A wee ripper

It's a winner! Tidy, well-presented, and ready to go, this gem is an ideal choice for savvy investors or home buyers looking for value in a great location. Inside you will instantly appreciate the near new carpet, light-filled living space, and generous layout. The spacious lounge flows effortlessly into the open plan kitchen and dining area, which extends out to a brand new deck, perfect for summer BBQs or simply relaxing with a coffee.

FOR SALE BY DEADLINE SALE
OPEN HOME SUNDAY 12.30PM-1PM
Ref : www.wiltonandco.nz/WIL01940
Adriana Wilton 0297766902



» 11 Duke Street **LEVIN**

4 2 1 2

Modern comfort meets versatile living!

If you've been searching for a home that offers room to spread out, entertain in style, or comfortably accommodate extended family - this one's for you! This well presented property ticks all the boxes with a modern kitchen, open-plan living, and an updated bathroom that brings everyday comfort to the forefront. What truly sets this home apart is the separate wing - complete with its own bedroom, bathroom, and living area.

BUYER ENQUIRY OVER \$650,000
OPEN HOME SUNDAY 12.30PM-1PM
Ref : www.wiltonandco.nz/WIL01911
Adriana Wilton 0297766902



» 58 Macarthur Street **LEVIN**

4 1 1 2 1

Elegant living

It's a true pleasure to present this charming colonial residence - a stand out on one of the area's most beautiful streets. Offering space, versatility, and timeless appeal, this four bedroom home is perfectly designed for those who value both style and substance. Zoned for the highly regarded Fairfield School, this property blends classic character with family friendly practicality.

BUYER ENQUIRY OVER \$659,000
VIEW BY APPOINTMENT ONLY
Ref : www.wiltonandco.nz/WIL01946
Tracey Fraser 0210779062



» 27 Weraroa Road **LEVIN**

3 1 1 1

Fully fenced and private

If you're searching for a private, well-located home with stylish updates, look no further. This three bedroom property is just minutes from town and schools, making it the perfect first home for family's or couples starting out. Step inside to a spacious lounge with impressive sloped ceilings, fresh paint, and near new carpet creating a warm and inviting space. The recently updated kitchen features sleek cabinetry

ASKING \$479,000
OPEN HOME SUNDAY 11AM-11.30AM
Ref : www.wiltonandco.nz/WIL01875
Tracey Fraser 0210779062



» 174 Bath Street **LEVIN**

2 2 1 1

NEW PRICE!

Welcome to this fabulous low maintenance two bedroom home designed for comfort and convenience. Step inside the entrance that leads to an inviting living / dining area, where warmth is guaranteed thanks to a log burner, heat pump and HRV system. Whether its a chilly winters night or a relaxing weekend this home has you covered. The well appointed kitchen offers a practical layout, has lots of bench space, a wall oven, dish drawer

BUYER ENQUIRY OVER \$579,000
OPEN HOME SUNDAY 11.45AM-12.15PM
Ref : www.wiltonandco.nz/WIL01865
Tracey Fraser 0210779062



» 112A Winchester Street **LEVIN**

2 1 1 1

Sunny, private & perfectly positioned!

Warm, welcoming, and bathed in sunshine, this delightful two bedroom home offers a lifestyle of ease and convenience in a private setting just a short stroll to town. Step inside to discover a north facing living area that captures all day sun, an updated kitchen for easy meal prep, and the bathroom with both a bath and shower box is sure to please. The sunny conservatory is the perfect spot to relax with a book or morning coffee.

PRICE BY NEGOTIATION
OPEN HOME SUNDAY 12.30PM-1PM
Ref : www.wiltonandco.nz/WIL01894
Adriana Wilton 0297766902



» 76 Parker Avenue **LEVIN**

4 1 1 1

Four bedrooms!

With an updated kitchen and bathroom this four bedroom home is set on a 587m2 section. The living room is spacious and flows through to the kitchen, perfect for family living. There's a double garage and private section. Located close to schools and parks. Make this yours today!

PRICE BY NEGOTIATION
OPEN HOME SUNDAY 11.45AM-12.15PM
Ref : www.wiltonandco.nz/WIL01919
Adriana Wilton 0297766902



» 57 Weraroa Road **LEVIN**

2 1 1 1

Solid brick unit, walk to town!

Whether you're downsizing, investing, or stepping onto the property ladder, this tidy brick unit is an ideal choice. Perfectly positioned just a short walk to town, it offers comfort, convenience, and low-maintenance living. Freshly updated with new carpet, curtains, and a modern paint palette, the home feels light, bright, and welcoming. The kitchen has been partially modernised, featuring a brand-new stove and fresh flooring.

PRICE BY NEGOTIATION
OPEN HOME SUNDAY 1.15PM-1.45PM
Ref : www.wiltonandco.nz/WIL01903
Lynaire Cottle 0272224017



» 35 Elizabeth Street **LEVIN**

4 2 1 2 1

Low maintenance living

Home plus Flat! Offering unmatched versatility for extended families, investors, or those seeking the ideal work from home setup. Live in one, rent the other, or explore the income potential of Airbnb. A low-maintenance brick townhouse featuring double glazing, HRV system, heat pump and infinity gas hot water.

BUYER ENQUIRY OVER \$679,000
OPEN HOME SUNDAY 12.45PM-1.15PM
Ref : www.wiltonandco.nz/WIL01905
Adriana Wilton 0297766902
David Campbell 0224127700



» 30A Perth Street **LEVIN**

3 1 1 1

Tidy, affordable & tucked away

This well presented three bedroom home offers an excellent opportunity for first home buyers or savvy investors. Neat and tidy throughout, it features a functional layout with open plan living, a heat pump for year-round comfort, and a family friendly bathroom with a shower over the bath. There is a separate laundry. Set on a private rear section, there's space to enjoy the outdoors in peace, along with a single garage.

ASKING \$409,000
OPEN HOME SUNDAY 11.45AM-12.15PM
Ref : www.wiltonandco.nz/WIL01873
Adriana Wilton 0297766902



» 224B Cambridge Street **LEVIN**

2 1 1 1

For the creative minds

Tucked away in a quiet, private position, this delightfully different home is brimming with charm and personality - the perfect sanctuary for an artist, writer, or anyone who appreciates unique design. Inside you will be inspired by the soaring high ceilings, incredible natural light, and generous living spaces that invite creativity and calm. A whimsical, storybook-style staircase adds a touch of magic, leading to two bedrooms.

ASKING \$485,000
OPEN HOME SUNDAY 12PM-12.30PM
Ref : www.wiltonandco.nz/WIL01835
Adriana Wilton 0297766902



» 190 Tiro Tiro Road **LEVIN**

2 1 1 1

Modern, light filled, and move in ready

Step into this beautifully modernised 1970s gem, where timeless architecture meets contemporary style. Fully refreshed throughout, this two bedroom home showcases a modern colour palette and quality finishes that enhance its warm, welcoming feel. Sunlight floods the open plan kitchen, dining, and living area through expansive west facing windows, while doors open effortlessly to a spectacular deck.

ASKING \$450,000
VIEW BY APPOINTMENT ONLY
Ref : www.wiltonandco.nz/WIL01938
Adriana Wilton 0297766902



» 42 Ballance Street **SHANNON**

2 1 2 1

Charming 1915 character home

Step through the white picket fence and be transported to a bygone era. This beautifully restored 1915 colonial style home captures the essence of timeless charm while offering modern comfort and convenience. From the moment you arrive, you'll be captivated by its classic character- leadlight windows, natural timber floors, and a welcoming colonial aesthetic. The heart of the home is the well appointed kitchen.

BUYER ENQUIRY OVER \$450,000
VIEW BY APPOINTMENT ONLY
Ref : www.wiltonandco.nz/WIL01916
Haley Sturt 02102387699



» 130 Cummerfield Road **FOXTON**

Choice of Three

Welcome to an exceptional opportunity in the heart of nature! We present three stunning lots, each spanning approx. 5,000 square meters, perfect for you to build your dream home or invest in the future. With no covenants, you have the freedom to create your ideal living space. Each lot is priced at BE0 \$310,000. Don't miss out on this unique opportunity to own a slice of paradise. Contact me today to learn more and schedule a viewing!

BUYER ENQUIRY OVER \$310,000
VIEW BY APPOINTMENT ONLY
Ref : www.wiltonandco.nz/WIL01934
Haley Sturt 02102387699



» 14 Twin Peaks Grove **KOPUTAROA**

3 3 3 1

IGNORE the RV of \$1,390,000

Our Motivated Vendor Says SELL! An extraordinary 26% under RV - that's serious value you cant afford to miss. This is your golden opportunity to secure a truly unique lifestyle property at an unbeatable price. The vendor is ready to meet the market - act now before someone else snaps it up!

BUYER ENQUIRY OVER \$1,059,000
OPEN HOME SUNDAY 1.15PM-1.45PM
Ref : www.wiltonandco.nz/WIL01857
Adriana Wilton 0297766902



» 197A Tiro Tiro Road **LEVIN**

2 1 1

Endless Possibilities on 1884m2

Sitting proudly on a generous 1884m2 section, this spacious 154m2 home has been utilised for commercial purposes for almost 20 years. With residential zoning still in place, the opportunity is wide open, continue as a commercial venture (consent required), reimagine as a unique residential home, or create a work-from-home setup with serious space.

ASKING \$599,000
OPEN HOME SUNDAY 12PM-12.30PM
Ref : www.wiltonandco.nz/WIL01885
Adriana Wilton 0297766902

HEARTLAND RUGBY

A HOROWHENUA STAR SPECIAL FEATURE



HK aims to shrug off home bogey



Horowhenua-Kāpiti rugby coach Aleni Feagaiga. Photo supplied

By Paul Williams

Horowhenua-Kāpiti will try and get a strange home ground bogey off their back when hosting visitors Buller at Levin Domain tomorrow.

Any punter will tell you that home ground advantage counts for a great deal in sports matches – yet Horowhenua-Kāpiti hasn't won a Heartland competition match at home for almost two years, not since beating Buller 33-22 in early September 2023.

Horowhenua-Kāpiti coach Aleni Feagaiga says he's aware of that strange quirk.

"It is something we have talked about," he says. "Last year we seemed to play better on the road. We want to make sure we perform in every game, especially at home in front of our supporters."

HK has had the wood over Buller in recent seasons. The teams play each year for the Centennial Cup, which the home team has held since 2021.

In the competitions held since 2020 – when there was no games played at all due to Covid-19 – Buller has finished 11th, 9th, 11th and 11th in the 12-team competition, whereas HK has fared slightly better with placings of 7th, 6th, 12th, and 6th.

Aleni says he was taking scant notice of those statistics.

"That's the beauty of Heartland rugby. On any given year and in any game teams can perform."

Horowhenua-Kāpiti had a chance to work on combinations and can take heart from a 45-10 win against Wellington Māori at Playford Park at the weekend.

Aleni says some of the team hadn't played for a month so had needed the gallop, and it was a good chance to firm up combinations.

It also gave the four import players a chance to mix in: Bay of Plenty number 8 Jack Sturmey, Petone first five-eighth Rory Woollett, Upper Hutt number 8 Pene To'o and Hutt Valley prop Nonu Tuia.

Jack could hardly be described as an import though. He grew up in Ōtaki, the son of former HK captain and loose forward Slade Sturmey, and a brother of Manawātū Cyclone players Kahurangi and Rangimarie.

Aleni has co-coach Kent Harris on his shoulder again, and team manager Tom Zimmerman will again get support from Tipi Luke.

The squad is starting to build depth, too, which counts for a great deal in Heartland

rugby. A good chunk of last year's team has returned, with some players edging closer to blazer games.

David McErlean (85 matches) Aaron Lahmert (84 matches), Willie Paia'ua, Connor Paki and Kahn Fotuali'i form a core of more experienced players.

The management team was expected to name a team captain at training under lights at Playford Park last night.

Meanwhile, get your banners made up. The match will be televised live on Sky TV.

The Horowhenua-Kāpiti team:

George Jacobs, Jeremy David, Nonu Tuia, Dallas Wiki, Mikaere Harvey, Aaron Lahmert, Jack Sturmey, Pene To'o, Kahn Fotuali'i, Rory Woollett, Joeli Rauca, Connor Paki, Darren Falaniko, Max Hoskings, Sean Pape, Brad Reilly, Dave McErlean, Ted Northcott, Michael Laursen, Albert Hemopo, TJ Barnsley, Jayson Aquilla, Willie Paia'ua.

■ WHO: Horowhenua-Kāpiti v Buller

■ WHERE: Levin Domain

■ WHEN: Saturday, August 16

■ KICK-OFF: 2.05pm.

THINKING RUGBY: COREY KENNETT

Volunteers form the backbone of our rugby community

By Corey Kennett

Across the Horowhenua-Kāpiti region, rugby thrives not just because of the players on the field, but because of the dedicated volunteers who keep the game alive.

From junior matches to Heartland representative fixtures, volunteers are the beating heart of our rugby community. Without their commitment, passion, and countless hours of unpaid work, our clubs simply could not operate.

Volunteers wear many hats. They are the referees and match officials selflessly giving up their time so a community event can take place, they are coaches guiding players and imparting their knowledge and passion for the game; they are the committee members making sure all of the critical club decisions are made; and they are the whānau support network that ensures logistics and support.

They run the fundraising barbecues, wash the jerseys, manage the team gear, and organise teams.

Many juggle these responsibilities alongside huge work and family commitments, driven purely by a

love for the game and a desire to give back to their community.

Their contribution goes far beyond the practical. Volunteers are culture-setters, passion kings and queens. They model sportsmanship, create welcoming environments, and help foster lifelong friendships.

In rural and smaller communities like ours, the rugby club is often a social hub, a place where generations come together. It is the volunteers who open the doors, greet the whānau, and make sure the club remains a place where everyone feels they belong.

The impact of their work is intergenerational.

A coach who mentors a young player might inspire them to one day coach the next generation. A junior rugby convener who organises junior rugby could be laying the foundation for a future All Black or Black Fern career.

We have many examples of elite players who cite their fond memories of how volunteers helped them on their journey.

The ripple effect of this unpaid dedication is

impossible to measure, but is felt deeply across our great game.

For the Horowhenua-Kāpiti Rugby Football Union, supporting and recognising volunteers is a top priority.

We understand that the sustainability of our clubs depends on valuing their contributions. Next time you see a volunteer at your local rugby or sports club, take a moment to recognise the time and effort they freely give. A simple "thank you" can mean the world to someone whose selfless service keeps our game and community thriving.

Rugby is more than just a game. It is a community, and that community is built by volunteers.

As we look to the future, the continued growth and success of rugby in Horowhenua-Kāpiti will rest on the shoulders of these selfless individuals. They are not just part of our union, they are the backbone of it.

■ Corey is chief executive of the Horowhenua-Kāpiti Rugby Football Union



Horowhenua Kapiti Rugby Football Union
e: office@hkrfu.co.nz w: hkrfu.co.nz

LEVIN
GLASSWORKS LTD

154 Oxford Street, Levin 5510

Mon-Fri: 8am to 5pm

Sat: 8am to 12pm

Sun: Closed

Call Us On: **06-367-0557**

levinglass@extra.co.nz

• Local experts in glass repair & replacement
Residential • Commercial • Insurance Work

SAVILLE'S
Est'd. 2002
BUTCHERY

PADDOCK TO PLATE
MEAT BOXES • QUALITY MEAT
Traditional values, quality produce

06 364 7140

📍 savillesbutchery.co.nz

I.C.MARK LTD

Serving the Local Community since 1972

FUNERAL DIRECTORS

 0800 ICMARK ~ (06) 368-8108

545 - 547 Queen Street East, Levin
The Avenue Crematorium, Avenue North Road, Levin
www.icmark.co.nz

Local and affordable waste solutions

At Low Cost Bins, we're committed to offering smart, affordable waste solutions that help our local community thrive! From household clean-ups to big projects, we've got you covered with **Wheelie Bins, Skips, and Jumbo Bags**.

Jumbo Bags are now available at:

 Mitre 10 Levin

 Foxton Hammer Hardware



Locals supporting locals | 100% Kiwi owned and operated

lowcostbins.co.nz

LOWCOSTBINS

MARK

Memorials

Headstones - Plaques - Restorations

06 367 0086-info@markmemorials.co.nz

www.markmemorials.co.nz

PGG Wrightson Real Estate

GEOFF WHITE

Rural & Lifestyle Sales Consultant

Servicing the Kapiti Coast and Horowhenua

Call today!

027 274 1478

pggwre.co.nz

PGG Wrightson Real Estate Limited, licensed under the REAA 2008.



TS SURVEYORS

➤ Subdivisions

➤ Land Surveying

➤ Boundary Marking

➤ Topographical Surveys

➤ Construction Setout

027 759 6854

tim@tssurveyors.co.nz • www.tssurveyors.co.nz

HEARTLAND RUGBY

THE DRAW



2025 HEARTLAND CHAMPIONSHIP				
DATE	HOME	AWAY	GROUND	TOWN
Round 1 Aug 16	Horowhenua-Kāpiti	Buller	Levin Domain	Levin
	Thames Valley	Mid Canterbury	Waihi Athletic	Waihi
	Poverty Bay	Ngāti Porou East Coast	Rugby Park	Gisborne
	West Coast	King Country	John Sturgeon Pk	Greymouth
	Whanganui	North Otago	Cooks Garden	Whanganui
Round 2 Aug 23	Wairarapa-Bush	South Canterbury	Memorial Park	Masterton
	Mid Canterbury	Horowhenua-Kāpiti	Showgrounds	Ashburton
	Buller	Whanganui	Victoria Square	Westport
	Ngāti Porou East Coast	West Coast	Whakarua Park	Ruatoria
	King Country	Poverty Bay	Owen Delany Pk	Te Kuiti
Round 3 Aug 30	North Otago	Wairarapa-Bush	Showgrounds	Oamaru
	South Canterbury	Thames Valley	Fraser Park	Timaru
	Horowhenua-Kāpiti	Poverty Bay	Levin Domain	Levin
	Ngāti Porou East Coast	North Otago	Whakarua Park	Ruatoria
	Buller	South Canterbury	Victoria Square	Westport
Round 4 Sept 6	Thames Valley	King Country	Boyd Park	Te Aroha
	Wairarapa-Bush	Mid Canterbury	Memorial Park	Masterton
	Whanganui	West Coast	Cooks Gardens	Whanganui
	King Country	Horowhenua-Kāpiti	Rugby Park	Te Kuiti
	Mid Canterbury	Ngāti Porou East Coast	Showgrounds	Ashburton
Round 5 Sept 13	Poverty Bay	Buller	Rugby Park	Gisborne
	North Otago	Thames Valley	Showgrounds	Oamaru
	South Canterbury	Whanganui	Fraser Park	Timaru
	West Coast	Wairarapa-Bush	John Sturgeon Pk	Greymouth
	Horowhenua-Kāpiti	West Coast	Levin Domain	Levin
Round 6 Sept 20	Buller	Thames Valley	Victoria Square	Westport
	Ngāti Porou East Coast	Whanganui	Whakarua Pk	Ruatoria
	King Country	Wairarapa-Bush	Owen Delany Pk	Taupō
	North Otago	Poverty Bay	Showgrounds	Oamaru
	South Canterbury	Mid Canterbury	Fraser Park	Timaru
Round 7 Sept 27	Whanganui	Horowhenua-Kāpiti	Cooks Garden	Whanganui
	Poverty Bay	South Canterbury	Rugby Park	Gisborne
	Thames Valley	Ngāti Porou East Coast	Coromandel RFC	Coromandel
	Wairarapa-Bush	Buller	Memorial Park	Masterton
	Mid Canterbury	King Country	Showgrounds	Ashburton
Round 8 Oct 4	West Coast	North Otago	John Sturgeon Pk	Greymouth
	Horowhenua-Kāpiti	Wairarapa-Bush	Levin Domain	Levin
	Buller	Ngāti Porou East Coast	Victoria Square	Westport
	King Country	Whanganui	Domain	Taumarunui
	North Otago	South Canterbury	Showgrounds	Oamaru
Round 9 Oct 11	Poverty Bay	Mid Canterbury	Rugby Park	Gisborne
	Thames Valley	West Coast	Centennial Pk	Paeroa
	South Canterbury	Horowhenua-Kāpiti	Fraser Park	Timaru
	Mid Canterbury	North Otago	Showgrounds	Ashburton
	Ngāti Porou East Coast	King Country	Whakarua Pk	Ruatoria
Round 10 Oct 18	Wairarapa-Bush	Poverty Bay	Memorial Park	Masterton
	Whanganui	Thames Valley	Cooks Garden	Whanganui
	West Coast	Buller	John Sturgeon Pk	Greymouth
	South Canterbury	Horowhenua-Kāpiti	Fraser Park	Timaru
	Mid Canterbury	North Otago	Showgrounds	Ashburton
OCTOBER 11 – LOCHORE CUP/MEADS CUP SEMI FINALS				
OCTOBER 18 – LOCHORE CUP/MEADS CUP FINALS				

■ Home games ■ Away games

 **Free 3 Year Service Plan**

OR

\$1,000 of Vehicle Accessories

OR

\$1,000 towards Suzuki Finance



HMCLEVIN

CRIGHTON

WE'LL SEE YOU RIGHT

Locally owned and operated timber and hardware specialist

OPEN

weekdays 7am-5pm

Saturdays 8am-12pm

15-19 Hokio Beach Rd, Levin

06 368 4057 • itm.co.nz

 **PRITCHARD CIVIL**

Best of luck HK!

www.pritchardcivil.co.nz

Specialists in civil infrastructure and land development

JENSEN & MOORE LIMITED

Vehicle servicing and repairs Exhaust specialists WOF



129 Oxford Street, Levin

06 368 9341

HEALTH MAINTENANCE HOLISTIC APPROACH FEEL FRESH, NEW, ALIVE!

 **bodymind therapy**

 **rhys dwyer**

relax

ZERO BALANCING CRANIOSACRAL THERAPY SOMATOEMOTIONAL RELEASE

heal

for body and mind

paxbodywork.co.nz 027 244 5886

Now in Levin 2 days per week

HĪTŌRIA/History

FOXTON RUGBY



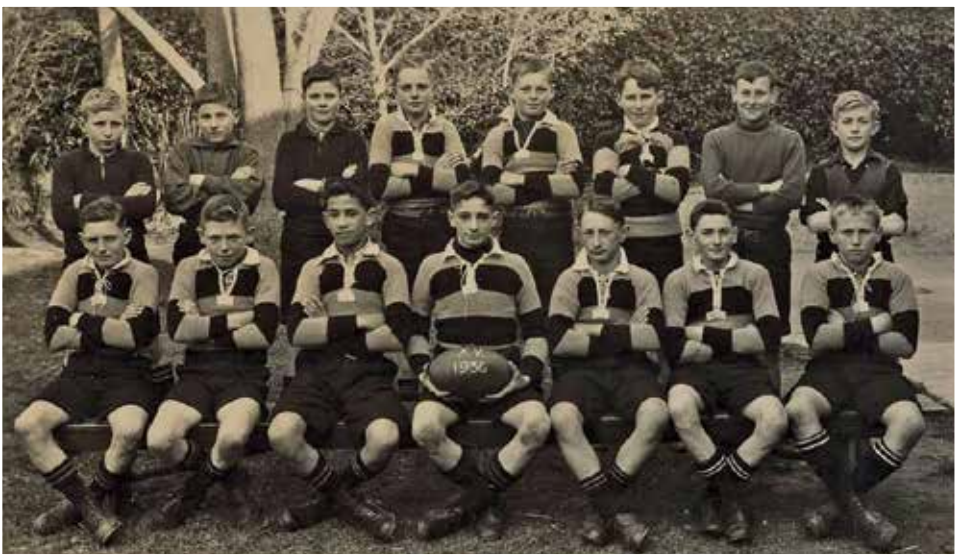
Foxton Beach Midget Rugby team 1966. Second in Competition. Played 8, Won 6, Lost 1, Drawn 1.
Back Row: T Groucott (Manager-Coach), G Spinks, M Loader, M Wilson, N Petersen, S Larsen, M Ellis, D Evans, D King, T Smith (Coach).
Front Row: T McGhie, G Raikes, C McGhie, F King, P Schwamm, W Wilson, L Spinks.

All photos: Foxton Historical Society

Left. AWAHOU RUGBY TEAM 1950. Members of Awahou rugby team outside unidentified meeting house.
Peter Reihana, Nig Broughton, Tommy Thompson, Bot Witika, Sy Pikimaui, Ron McGregor, Jack Devonshire, Bob Cochran. Front: Jim Moses, Rua Hunt, Joe Tukupua, Bill Kawana, Sonny Tukupua, Taylor Hemara, Taupiri Gilman, Thompson Tukupua.



MIDGET RUGBY c1970: A Foxton Midget rugby game in progress at Easton Park. Players mentioned include Dave Enwright, Chris Vertongen, Leslie White and Jack Whakatihi.



FOXTON SCHOOL RUGBY 1936.
Back row from left: unknown, Rod McKenzie, Unknown, Gordon Podmore, Eric Betty, Pat Boyle, Bill Byne. Front: B. McGee, Colin Evans, Paul Hakaraia, Don Austin, Welby Coley, Doug Clark, Bill Fletcher.



Above. FOXTON SCHOOL RUGBY 1940.
Back row from left: Len Eagle, Neil Rough, T Richardson.
Middle: T Kereona, M Read, M Betty, G Huff, L Allerby, A Hakaraia.
Front: Don Calder, Graeme Everton, Doug Fuller, Keith Smith, R Walls.

Left. FOXTON RUGBY TEAM 1908, Cup Winners. Semi formal photograph taken in a studio of 16 unidentified men from the rugby team.

A reminder of halcyon days

By Paul Williams

Another chapter in Horowhenua’s softball legacy was written last month when the New Zealand Black Sox made it all the way to the finals of the World Series in Canada.

At the heart of the team was a strong Horowhenua influence that could trace its roots back to halcyon days of a thriving local softball scene during the 1970s, 1980s and 1990s with

Levin as the epicentre. Those eras produced players like pitching legend Chubb Tangaroa NZOM, and whānau names like Matakatea, Hori Te Pa, Workman and Stockford among a lengthy list of men and women to attain national honours. It’s remarkable that for such a small province, Horowhenua can lay claim to having produced some of the game’s greats, all born of sunny summer days spent at the diamond as youngsters. Ripples from those eras are still whipping up big waves and there’s a massive Horowhenua

connection to the current Black Sox outfit that went so close to winning yet another world title in Canada last month. Black Sox great Thomas Makea, who played a season for Horowhenua-Kāpiti in rugby at second five-eighth, took over as Black Sox head coach in 2023, while sons Dante and Reilly played key roles in the team on the field. Levin business owner Steve Deans is Black Sox co-coach, while Chubb himself was coaxed out of retirement by Thomas to take the position as pitching coach. Speaking to *Horowhenua Star* this week Steve

says it only proves that world-class sportspeople can come from anywhere – they just need encouragement and access to a bat and a ball. That’s why he has a bin outside his business where unused sports gear can be donated and given to budding youngsters with dreams. There could be a future world-class softball player just waiting to get his or her hands on a bat and a ball. He believes in the potential of young people and says he sees talent everywhere that one day “could be the next Chubb Tangaroa”. “The talent is all there. In today’s world with so much going on it can be hard to get kids motivated, and that’s a challenge society faces, but the talent is out there,” he says. “The gems are there.” NZ Softball high performance manager Bevan Matene says there’s an opportunity again to make the most of what is another top-class result by one of the most successful teams in New Zealand sporting history, to inspire a new generation. “You can start with tee-ball, you can use a sack for the bases. Just get a bat in their hand, a ball in their hand,” he says. Like many other traditional New Zealand sports, fewer people have been playing softball locally in recent times. The club scene has gone into hiatus in Levin in recent years, but the sport is being kept alive by teams and players travelling to compete in Palmerston North leagues. Meanwhile, the Black Sox are the most successful team in softball history and were chasing their eighth world championship title last month, having won in 1976, 1996, 2000, 2004, 2013, and 2017, finishing runners-up in 1988, 1992, 2009 and 2015. New Zealand has made the podium 14 times in the 18 World Series held to date. Despite losing the final 3-0 to Venezuela at the World Series in Canada last month, it’s a massive improvement on their eighth placing in 2022 and reaffirms their standing as one of the best teams in the world. Much of the credit for the turnaround could belong with Makea and the rest of the coaching staff who worked hard to instil confidence and prepare a team to take on the world, and the players themselves for giving it everything on the field. Thomas says the players could be proud of how far they had come in reaching the podium.

“It was a silver medal with a lot of gold in the journey,” he says. The aim now for the Black Sox will be on qualifying for the next World Series in 2029.



Above, Black Sox coach Thomas Makea (centre) and the team acknowledge their supporters after a match at the recent World Series in Canada. Right, batter Dante Matakatea-Makea during the World Series. Photos WBSC Mens World Cup 2025.



Entrance tides August 15-22

<https://www.metservice.com/marine/regions/whanganui-manawatu/tides/locations/foxton>
<https://www.metservice.com/marine/regions/kapiti-wellington/tides/locations/waitarere-beach>

Please note: The actual timing of high and low tide might differ from that provided here. Times are extrapolated from the nearest primary port for this location, so please take care.

MANAWATU RIVER FOXTON					
	HIGH	LOW	HIGH	LOW	HIGH
FRI 15 AUG	01:49	08:27	14:19	20:50	-
SAT 16 AUG	02:42	09:20	15:16	21:51	-
SUN 17 AUG	03:42	10:21	16:25	23:04	-
MON 18 AUG	04:54	11:34	17:48	-	-
TUE 19 AUG	-	00:24	06:13	12:54	19:08
WED 20 AUG	-	01:38	07:30	14:07	20:12
THU 21 AUG	-	02:40	08:33	15:04	21:04
FRI 22 AUG	-	03:31	09:25	15:52	21:47
WAITARERE BEACH					
	HIGH	LOW	HIGH	LOW	HIGH
FRI 15 AUG	01:04	07:25	13:34	19:48	-
SAT 16 AUG	01:57	08:18	14:31	20:49	-
SUN 17 AUG	02:57	09:19	15:40	22:02	-
MON 18 AUG	04:09	10:32	17:03	23:22	-
TUE 19 AUG	05:28	11:52	18:23	-	-
WED 20 AUG	-	00:36	06:45	13:05	19:27
THU 21 AUG	-	01:38	07:48	14:02	20:19
FRI 22 AUG	-	02:29	08:40	14:50	21:02

RESULTS & FIXTURES

RUGBY
Horowhenua-Kāpiti v Buller, Levin Domain. Kick-off 2.05pm, Saturday August 16 (see full Heartland draw page 15, story page 14).

FOOTBALL
Results
Levin AFC Men’s Premiers 1, Palmerston North United 0. Levin AFC Men’s Reserves 0, Whanganui Athletic 0. Levin AFC Colts 0, RSM Wrinkles 3. Levin AFC Sports 4, Feilding United 0. Levin AFC Social 4, Feilding United 1. Levin AFC Masters 0, RSM 0. Levin AFC Women’s Premiers 1, PN Marist 0. Levin AFC Womens Reserves 3, PN Marist 1.

GOLF
Foxton Midweek
Thursday (August 7): Todd McGuigan 36, Curly Evans c/b 34, Lorna Soo 34, Malcolm George 33 c/b, Joanne Wilton 33. **Tuesday** (August 12): Keith Norris 41, Tamati McGregor 40, Marty Berry 38, Harriet

Dewes 35, Ann Hogg c/b 34, Barry Graham 34. 2’s: Keith Norris on 7. Gary Stratford on 7.
Foxton 9 Hole (August 13
Nett Competition - Charlie Matenga 34, Kevin Young 35, Eric Cornick 36, Geoff McBrydie 37, Stehpen Hanna 40, Clint Taylor 41, Carol Kupa 41, Sylvia Young 42, Elaine Pedersen 42, Ruth Williams 42, Steve Kupa 42.



COLLING & GRAY

PANELBEATERS

SPRAYPAINTERS

LEVIN

Approved Structural Collision Repair Specialist

NO REPAIR TOO SMALL

SPECIALISING IN: • All Vehicle Insurance Claims

• Plastic Welding • Accident Damage • Rust Repairs

• Motorbike Repairs • Vehicle Restoration Work

• Relief Vehicles Available

Collision Repair

CRA

22 Liverpool Street, LEVIN

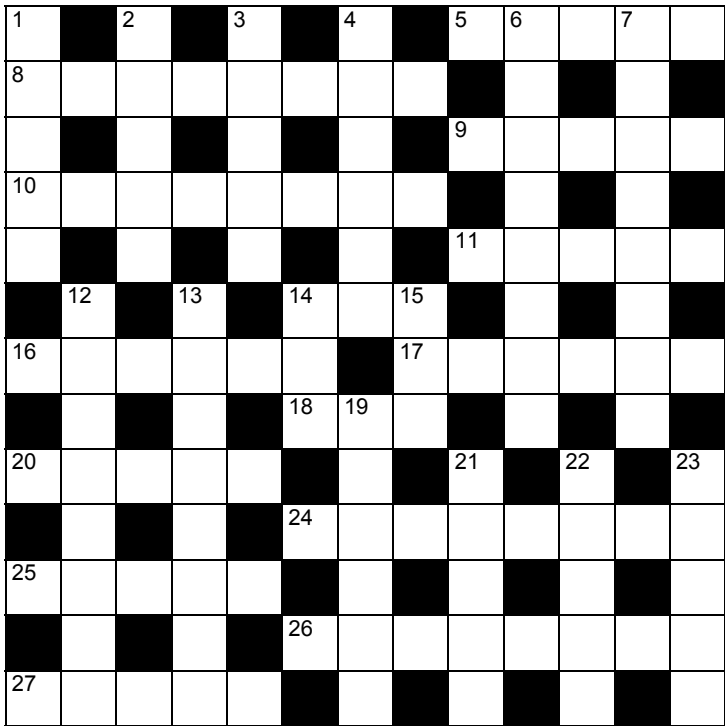
368 4722

collingandgray@xtra.co.nz • panelbeaterslevin.co.nz

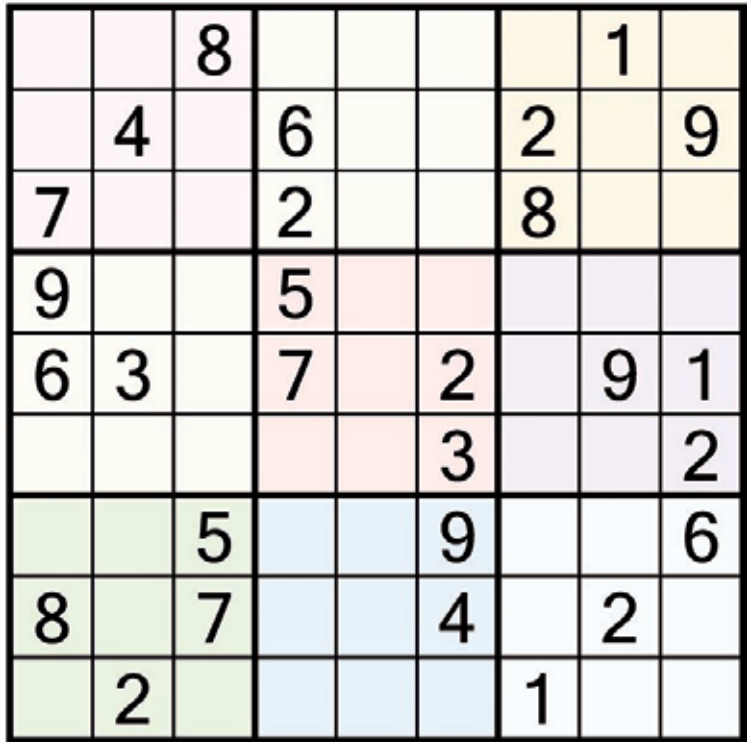
mta

ASSURED

THE CROSSWORD #NZ1946B (answers below right)



SUDOKU PUZZLES thepuzzlecompany.co.nz
HARD #90H Use logic and process of elimination to fill in the blank cells using the numbers 1 through 9. Each number can appear only once in each row, column and 3x3 block.



CROSSWORD #1946B ANSWERS
Across: 5. Catty, 8. Nadia Lim, 9. Timid, 10. Galloway, 11. Smoko, 14. Add, 16. Fabric, 17. Israel, 18. Con, 20. Clout, 24. Manawatū, 25. Again, 26. Agitated, 27. Stone. **Down:** 1. Snags, 2. Oddly, 3. Havoc, 4. Wizard, 6. Ātiāmuri, 7. Thickset, 12. Fanlight, 13. Art Union, 14. ACC, 15. Din, 19. Orange, 21. Salty, 22. Hasty, 23. Ruddy.

SUDOKU SOLUTION #90H

2	9	8	4	3	6	7	1	5
1	4	3	6	7	8	2	5	9
7	5	6	2	9	1	6	3	4
9	7	2	5	1	6	3	4	8
6	3	4	7	8	2	5	9	1
5	8	1	9	4	3	7	6	2
3	1	5	8	2	9	4	7	6
8	6	7	1	5	4	9	2	3
4	2	9	3	6	7	1	8	5

- ACROSS
- 5 Spiteful (5)
8 Winner of MasterChef New Zealand in 2011 (5,3)
9 Shy (5)
10 Cattle breed introduced to New Zealand from Scotland (8)
11 Tea break (colloq) (5)
14 Sum up (3)
16 Material (6)
17 First name of UFC fighter Adesanya and former All Black Dagg (6)
18 Point against (3)
20 Influence (5)
24 River that flows into the Tasman at Foxton Beach (8)
25 Once more (5)
26 Worked up (8)
27 Pebble (5)
- DOWN
- 1 Sausages (colloq) (5)
2 Peculiarly (5)
3 Mayhem (5)
4 Former Christchurch identity in Cathedral Square, The ____ (6)
6 Former hydro village 27km south of Tokoroa (8)
7 Solidly built (8)
12 Small window, usually at the top of the frame (8)
13 Forerunner to Golden Kiwi and Lotto (3,5)
14 Govt department (abbr) (3)
15 Racket (3)
19 A colour, and a fruit (6)
21 Briny (5)
22 Rushed (5)
23. Florid (5)



A GEOGRAPHY QUIZ
Answers bottom of page.

1. The Canary islands are named after which animal?

2. What is the only continent with land in all four hemispheres?

3. True or False: Holland is a region in The Netherlands?

4. Which of these countries is NOT in Africa? a. Guyana b. Guinea c. Equatorial Guinea

5. Which of these countries is the most densely populated? a. Hong Kong b. Monaco c. Singapore ?

6. How many tectonic plates does the Earth have? a. 5 b. 6 c. 7.

7. Which of these languages is the most spoken (native speakers only)? a. Spanish b. English c. Hindi.

8. When does magma become lava? a. When it reaches the surface. b. When it reaches a certain temperature. c. It never does.

9. Where is Angel Falls, the world's largest waterfall, located?

10. On what continent would you find the world's largest desert.

11. What is the tallest type of tree?

12. What is the capital of Finland?

13. What is the world's largest rainforest?

14. How many nations are recognized by the UN?

15. Which continent has both the highest and lowest points on the surface of Earth?

WORD SEARCH: RUGBY answers page 19

A	S	F	K	C	M	R	E	K	O	O	H	C	K
A	Y	I	A	U	K	A	C	E	T	Y	O	N	G
A	C	K	P	K	U	E	U	A	T	R	Y	T	S
K	D	R	O	P	G	O	A	L	V	G	N	S	P
E	L	L	C	O	N	V	E	R	S	I	O	N	T
O	S	M	P	E	N	A	L	T	Y	I	F	S	A
Y	V	E	P	A	T	E	L	K	N	A	L	E	C
P	O	S	S	E	S	S	I	O	N	B	A	C	K
E	A	S	A	K	S	K	E	L	N	C	N	L	L
D	R	P	Y	R	E	C	R	U	C	K	K	C	E
A	S	K	U	E	P	V	R	L	R	O	E	T	E
O	A	G	P	K	D	O	S	U	G	L	R	E	M
O	B	L	I	N	E	O	U	T	M	O	V	A	E
Y	A	T	S	R	A	D	V	A	N	T	A	G	E

RUGBY	KICK	ADVANTAGE
MAUL	LINEOUT	DROP GOAL
RUCK	PENALTY	HOOKE
FLANKER	CONVERSION	A TRY
SCRUM	ANKLE TAP	
TACKLE	POSSESSION	

A GEOGRAPHY QUIZ ANSWERS: 1. Dogs. (specifically derived from Latin "Canariae Insulae," meaning "Islands of the Dogs". The canary bird, on the other hand, is named after the islands, not the other way around.) 2. Africa. 3. True. 4. a. Guyana. 5. b. Monaco. 6. c. 7. 7. a. Spanish. 8. a. When it reaches the surface. 9. Venezuela. 10. Antarctica. 11. Redwood. 12. Helsinki. 13. The Amazon. 14. 195. 15. Asia.

YOU'RE INVITED TO BE WOW-ED

WOW Earthling, Gill Saunders, New Zealand
Photo: World of Wearable Art Ltd

Travel with us in style to be whisked away & WOW-ed. Be inspired. WOW awaits.

Join us for a premium escorted day tour to see The World of Wearable Art (WOW) Show. Guaranteed to be an unforgettable experience with live music, dance, aerial choreography, and world-class art.

INCLUDES:

- Premium coach transfers with pick ups available in Palmerston North and Levin
- Brunch with hot or cold drink (options available closer to departure)
- Platinum seating at World of Wearable Art 2025 show: RISE WOW 2025 show programme

Tour Departs Palmerston North 28 September 2025, 9am

Limited tickets available, RSVP today to secure your spot!

06 357 4605


103 Broadway Ave

palmerstonnorth@travel.helloworld.co.nz

* Terms & Conditions Apply: Payment is required at the time of booking to secure your place and can be made via credit card, bank deposit or in-store. Cancellations made more than 30 days prior to departure, fees may apply. Cancellations within 30 days of departure are non-refundable. This tour requires a minimum number of participants to operate. In the unlikely event minimum numbers are not met, a full refund will be provided, or alternative options offered. Return premium coach travel from Palmerston North and Levin Hosted by Kim & Elise from helloworld Travel Palmerston North. Brunch and hot or cold drink of choice from a selected menu only - additional costs over and above offering to be settled directly with the cafe Platinum seating at WOW (World of Wearable Art) Show Escorted throughout the day. While every effort will be made to operate the tour as described, helloworld Travel reserves the right to adjust the itinerary, timing, or inclusions due to unforeseen circumstances or venue changes. Guests must be able to board the coach independently or with assistance from their companion. Please inform us at the time of booking of any mobility or dietary requirements. As this is a non-refundable event, we recommend travel insurance to cover unexpected cancellations or personal situations. Liability helloworld Travel Palmerston North acts as an agent for service providers and cannot be held liable for events outside our control, including venue changes, delays, or force majeure events. See in store for more information.

THE TRAVEL PROFESSIONALS

cars



THAT CAR GUY
MATT
Buyer of all vehicles
Cars 4x4s
Vans Trucks
Utes
020 4057 2087

plumbers



HARRIS & ECKERSLEY
PLUMBING & GAS LTD.

FREE QUOTES

PLUMBING
Maintenance
Renovations
New Homes
Light Commercial

GAS FITTING
Servicing of all appliances
New installations
Heaters, cookers
Water heating

Shane 027 282 1048 • Alex 027 345 6014
e: heplumbingandgas@gmail.com

DEATH NOTICES

remember
your loved one
in a notice

e: debbi@idmedia.co.nz
or txt
027 285 4720

pest control



ANTI ANTS

UNWANTED ANTS
ARE OUR SPECIALTY!

Our treatments are guaranteed odourless and stain free. We also have solutions to control wasps, flies, spiders, cockroaches, mosquitoes, silverfish, moths, plus rats and mice.

PROTEKT PEST CONTROL
phone PAUL 06 364 5759 or 027 448 3910
or Wellington 04 472 9948

funeral directors

I.C.MARK LTD
Serving the local community since 1972
FUNERAL DIRECTORS



0800 ICMARK ~ (06) 368-8108
545 - 547 Queen Street East, Levin
The Avenue Crematorium, Levin

Death Notifications Online - www.icmark.co.nz
Our local area encompasses Levin, Otaki, Foxton & Shannon - We do conduct funerals further afield



Horowhenua College and Waiopahu College OUT-OF-ZONE ENROLMENT INFORMATION

The boards of the above schools invite applications from parents who wish to enrol their children at the above schools for next year. Details of the enrolment schemes are available from the relevant school offices or the school's websites. Applications should be made in writing addressed to the Principal of the relevant school. The envelope should be marked "Application for enrolment".

The deadline for receipt of applications for out-of-zone places is
TUESDAY 14th OCTOBER 2025

Parents of students who live within the home zone of either schools should also enrol by this date to assist the schools to plan appropriately for next year.

The board of each school has determined that the following places are likely to be available for out-of-zone students next year.

Horowhenua College - 50 places available for Year 8 students who live outside the enrolment zone and who will have a sibling at any year level who is enrolled at Horowhenua College on the first day of Term 1, 2026.

Waiopahu College - 50 places available for Year 8 students who live outside the enrolment zone.

The exact number of places available at each school will depend on the number of applications received from students who live within the school's home zone.

Horowhenua College and Waiopahu College operate approved special programmes, for which enrolment is controlled by particular criteria stated in the enrolment scheme of each school. The special programme places likely to be available for out-of-zone students are shown below;

Horowhenua College: The Services Academies Programme - 0 places

Waiopahu College: - Te Whare Awhina - 3 places - Poipoia - 13 places

If the number of out-of-zone applications exceeds the number of places available (outside of the special programme), students will be selected by ballot.

In cases where ballots are required, they will be held on the **28th October 2025**.

Parents will be informed of the outcome of the ballot within three days of the ballot being held.

He Pānui

Horowhenua 11 Part Reservation Trust Notice of Adjourned AGM and Election Result

There was not a quorum of owners for the AGM on 3 August 2025, the AGM was adjourned to 11am Sunday 24 August 2025.

Please note due to a clash of bookings at the Marae, there is a change of venue: **The Rangatahi Whare, 308 Oxford St, Levin. Registration from 10am.**

AGENDA

1. Financial Reporting
2. Trustee operations of the last year
3. Trust Project Updates
4. Resolutions regarding support for the three nominees
5. General Business
6. Presentation on Review of Trust from Renika Siciliano & Baden Vertongen (Court Appointed Counsel)

Documents available prior to the hui can be found on the trust website and Facebook page.

Note that this is the 2024 AGM for the Trust.

The delayed scheduling has been approved by Judge Warren of the Māori Land Court.

Notice of Election Result

The Horowhenua 11 Part Reservation Trust gave notice inviting nominations to fill 6 trustee positions. The Registrar of Māori Land Court Aotearoa, as Returning Officer, has confirmed three nominations were received: Selena Hunt, Marokopa Wiremu-Matakatea, Jonathan Proctor.

Judge Warren has confirmed that, as there were just three nominations for the six positions, no election is required. However, Judge Warren requires indications of support for each of the three nominees by way of resolution and a show of hands at the AGM.

stock auctions



WEDNESDAY SALE

Levin Showgrounds
Tiro Tiro Road
entrance

10.30am
Calves

11am
Prime sheep

Store lambs

Ewes

Weaners

Yearlings

2 yr old cattle

Contact

David Haworth

027 450 4133

06 368 2642

GARAGE SALES

ADVERTISE HERE
contact
debby@idmedia.co.nz
027 285 4720

STAR DIRECTORY

McCown Pumps
022 587 5450
Farm, House, Bore, Septic,
Irrigators, Pulsators, Maintenance,
Replacement

ALL ENQUIRIES, PLEASE CALL
DAN 022 587 5450
6 Roslyn Road, Levin • danielmccown01@gmail.com

Callum Pearson
Registered Electrician

CPRE

- rewires
- new builds
- switchboard upgrades
- additions / alterations
- lighting upgrades
- heatpump installation & service
- TV Data install & service
- EV charging
- CCTV & alarms
- Smart Home & IoT

callum@cpre.nz | 027 695 8925

HOROWHENUA FREEMASONS

Are you
interested?

PHONE
021 0835 5308



PRIOR & PALMER LTD

Panel beating and spray painting specialists

Environmentally
friendly
water borne
paint system

- Latest technology
- Quality finish
- Authorised insurance
repairer
- Vehicle repair certification

Cain Henderson | 111 CAMBRIDGE ST, LEVIN
Karl Watson | 06 368 3411

NEW LID ROOFING LTD

True 35 years experience

- All reroofing repairs • Re-roof
- Spouting • Moss kill
- **FREE QUOTES**



Call Bruce for all your roofing solutions
027 932 3754 • bprobbie54@gmail.com

ŌTAKI YESTERDAY

Ōtaki's annual historical magazine,
featuring stories about the
people and places of old Ōtaki.

All issues available
\$25/copy + p&p

Contact debbi@idmedia.co.nz
or text 027 285 4720



Te Awahou
Funeral Services

Jayden Moore
Owner
Funeral Director
Embalmer

Marina Bennett
Owner
Funeral Director
Embalmer

Brooke Burns
Funeral Day Technician
Social Media

Leo
Grief Support

Te Awahou Funeral Services, cnr Purcell St & SH 1, Foxton • 06 363 7404 • teawahoufunerals.co.nz



WEEKLY FROM \$140

ONLY \$25,995

2023 SUZUKI VITARA JLX HYBRID 1.4PT/2WD/6AT
NZ new, sold new by HMC 2023, 1 private owner, only 42,900km, full service history/books, towbar, alloys, window tints, adaptive cruise cont, climate a/c, FCW, LCW, DRL's, BSM, Bluetooth/USB, rev cam/sensors, sat nav, keyless entry/start/stop, 2 keys, factory warranty balance.



2025 ISUZU D-MAX X-RIDER 3DT/4WD/6AT

NZ new, ex-demo, only 3,790km, Black alloys, sports bar, tonneau cover, window monsoons, select 4WD with hi-lo, diff lock, auto headlights, Bluetooth, cruise cont, BSM, DBC, rev camera/sensors, service books, factory warranty balance.

WEEKLY FROM \$310

NOW ONLY \$59,995



2024 MITSUBISHI PAJERO SPORT VRX 2.4DT/4WD/8AT
NZ new, only 15,800km, towbar, alloys, running boards, rear spoiler, window tints, roof rails, bonnet guard, electric tailgate, adaptive cruise cont, surround view/rev camera, Bluetooth/USB, 7-seater in leather, heated front seats, paddle shift, DRL's/FCW/DBC, climate a/c, keyless entry/start/stop, factory warranty balance.

WEEKLY FROM \$265

NOW ONLY \$50,995



WEEKLY FROM \$185

2024 SUZUKI VITARA SAFARI JLX 1.4PT/HYBRID/6AT

NZ new, ex-demo, only 2,860km, alloys, window tints, roof rails, roof racks, bonnet guard, FCA, LDW, DRL's, DSC, paddle shift cont, adaptive cruise cont, climate a/c, immobiliser, Bluetooth/USB, rev camera/sensors, keyless entry/start/stop, service history/books, factory warranty balance & ORC included.

NOW ONLY \$35,995

WINTER SPECIAL SAVE \$\$\$!

2019 SUZUKI VITARA JLX 1.4PT/2WD/6AT

NZ new, 1 private owner, sold & serviced by HMC from new, only 77,350km, alloys, roof rails, window tints, rev cam/sensors, climate a/c, cruise cont, Bluetooth/USB, sat nav, immobiliser, FCW/LCW, auto headlights, keyless entry/start/stop, service books.

ONLY \$19,995

WEEKLY FROM \$105



WORKSHOP NOW OPEN SATURDAYS!
HOURS: MON-FRI: 7:30AM-5PM
SAT: 8AM-12PM

GET A WOF INSPECTION JUST \$75!

Get Ready for Winter! Ask Us About Our FREE Battery Test to Keep You Moving!

MORE INFORMATION

0800 744 111

HMC LEVIN
15-19 Bristol Street, Levin

2018 SUZUKI GRAND VITARA 2.4P/4WD/5MT

NZ new, sold new by HMC 2018, 1 owner, only 11,000km, 5speed manual, select hi-lo ratio 4WD, alloys, black graphics, roof rails, roof racks, rev cam, CD stereo, Bluetooth, cruise cont, climate a/c, immobiliser, service books, 2 keys.



ONLY \$19,995 WEEKLY FROM \$105

2016 HOLDEN BARINA CD 1.6P/6AT

NZ new, only 85,170km, alloys, auto headlights, CD stereo, Bluetooth, central locking, abs, a/c, immobiliser, cruise cont, traction cont, multi-function steering wheel.



NOW ONLY \$9,995 WEEKLY FROM \$55

2020 SKODA FABIA AMBITION 1.6P/6AT

NZ new, only 30,750km, one private owner, service history & books, 2 keys, alloys, abs, cruise cont, Bluetooth, surround view/rev camera, immobiliser, climate a/c, keyless entry/start/stop.



ONLY \$16,995 WEEKLY FROM \$90

2007 MAZDA MPV 2.3P/AT

Import, only 174,800km, alloys, window tints, roof rails, CD stereo, Bluetooth/USB, rev camera, keyless entry, 2 keys, immobiliser, 7-seater.



ONLY \$7,495 WEEKLY FROM \$43

2015 HOLDEN COLORADO LT 2.8DT/4WD/6AT

NZ new, only 109,500km, towbar, alloys, roof racks, window tints/monsoons, canopy, A/T tyres, cruise cont, a/c, downhill brake cont, rev camera/sensors, Bluetooth, keyless entry, 2 keys.



ONLY \$26,995 WEEKLY FROM \$415

2006 HONDA CRV 2.4P/2WD/4AT

Import, only 131,150km, alloys, window tints/monsoons, roof rails, CD stereo, electric windows/mirrors, keyless entry, 2 keys, abs, a/c.



ONLY \$6,995 WEEKLY FROM \$40

Got a used car taking up driveway space? Need some extra cash?

WANTED!!
USED CARS WANTED
HMC Levin are buying used cars now.

Free appraisal on your used vehicle prior to purchase.

*Terms & Conditions apply.**



360 Oxford Street, Levin
Julian 027 216 7989
P: 0800 744 111
W: hmclevin.co.nz
WHERE JOURNEYS BEGIN

Talk to us today about finance options

- Best value new and used vehicles
- Comprehensive repair and maintenance options
- Practical pick up and drop off service
- Guaranteed genuine parts and accessories

This finance estimate is calculated based on a 60 month term at 11.95% fixed interest per year – actual interest may differ. \$500 establishment and \$2.90 monthly maintenance fees apply. Lending terms and conditions will apply.*