



Police in riot gear clear Oxford Street after burn-outs at both the Queen Street and Bath Street intersections.

Photo Ian Carson

Praise for cops' efforts

By Paul Williams

Police have received widespread praise for their handling of what can only be described as an act of urban terrorism in Levin at the weekend involving boy racers from all over the North Island.

An organised invasion of more than 1000 people and their cars – some armed with axes and machetes – had the potential to cause major damage to people and property.

But a coordinated response of more than 100 police and members of the Armed Offenders Squad, police dogs and the police Eagle helicopter helped to quell the invasion and prevent further serious injury, potentially saving lives.

Social media footage shows a woman struck violently by a fish-tailing car as she was videoing

it with her phone. Another woman was taken to Palmerston North Hospital in a serious condition after her legs were run over.

Hato Hone St John ambulance crews from Foxton, Ōtaki, and Palmerston North, plus a rapid response unit, were called out. St John operations manager Gareth Collings says crews did an "outstanding job given the trying circumstances".

The invasion last Friday night drew nationwide attention with the general public heaping praise on the police for their efforts, while condemning the actions of the burn-out participants.

Both Horowhenua District Council and Palmerston North City Council publicly thanked police and emergency services for their coordinated response. Horowhenua Mayor Bernie Wanden condemned the invasion, saying the behaviour was disgraceful.

"This activity isn't just reckless – it's dangerous," he said. "People have been hurt."

He noted that most of the individuals involved were not from the Horowhenua district, "yet it's our community that bears the burden".

"I commend police and emergency services for their quick and decisive actions."

Palmerston North Mayor Grant Smith said it was great to see the significant police presence.

"I want to thank the police for their efforts last night and hope those involved get the message that street racing is simply not welcome in our region," he said.

Having been outnumbered without warning at a similar invasion last year, this time around police were ready.

Monitored communications showed those organising the invasion had adopted a war-like mentality with their language. Riotous and anti-

police behaviour was being encouraged.

Levin senior sergeant Bernard O'Brien helped formulate a comprehensive plan to counter the invasion, which ultimately led to the engaged support of police from areas like Palmerston North, Wellington and New Plymouth..

"The public are sick of it. Police are sick and tired of it," he said. "This is not just harmless fun."

Manawātū area prevention manager Ash Gurney says police were met with the threat of vehicles, physical aggression and fireworks. Two police officers received minor injuries after being hit by fireworks.

Police made 10 arrests and are continuing their enquiries, intending to hold to account everyone identified as having committed an offence.

■ See also 'Criticism just noise', page 5.

EXPERIENCE BEAUTY NATURALLY

www.LDHair.co.nz

Discover Milkshake Haircare – sulfate-free, vegan, and cruelty-free formulas that nourish and protects.

milk_shake hair care products make the most of the benefits of nature, and offer dedicated solutions for all hair types. Natural ingredients, such as milk and yogurt proteins and fruit extracts, enhance hair's natural beauty.

265B Oxford Street, Levin
(06) 368 8801

HOROWHENUA STAR

Ngā kōrero o
Horowhenua

DESIGN by ID Media

PRINTED by
Beacon Print,
Whakatāne.Online:
horowhenuastar.comISSUE 19:
ISSN: 3021-3630
(print)
ISSN 3021-3649
(online)Next copy and
advertising deadline:
Tuesday 5pm,
June 10.Publication:
Friday, June 13.
Delivery: If you don't
receive your copy of
Horowhenua Star,
please text or call
027 2411 090.The Star is published
by ID Media Ltd
13 Te Manuao Road
ŌtakiThe Horowhenua Star
is a member of the NZ
Community Newspapers
Association

EDITOR
Paul Williams
For editorial
enquiries or
news tips,

call Paul on 027 250 4865 or
editor@horowhenuastar.com

**SENIOR
REPORTER**
**Janine
Baalbergen**
027 801 9545

janine@horowhenuastar.com



**ADVERTISING
SALES**
Pip Hakaraia
027 809 4201

sales@horowhenuastar.com



**GENERAL
MANAGER**
Debbi Carson.
027 285 4720

debbi@idmedia.co.nz



**MANAGING
EDITOR**
Ian Carson
027 2411 090

ian@idmedia.co.nz

Rev David recognised

By Paul Williams

Levin resident Reverend David Major has been made a Member of the New Zealand Order of Merit (MNZM) for services to the community and state.

He says he is "surprised and honoured" and had always looked on service to others as "a privilege and a joy."

David has always had a close connection to Levin. Born in Auckland in 1946, his family moved to Levin and lived at Stuckey Street. He did his initial schooling at the old Levin Central School, now the site of Levin Adventure Park.

His father, Elliott, was a Salvation Army officer and used to visit Kimberly Hospital near Levin, now where Speldhurst Country Estate is, and where David and wife Carol now live. The couple actually bought the same Stuckey Street house 50 years later and lived in it for a time.

David trained as a teacher at Ardmore Teachers College and taught in New Zealand for five years before embarking as a Salvation Army officer, teacher and missionary, to Papua New Guinea and Fiji, then Russia and Belarus.

He served in Russia shortly after the disestablishment of the former Soviet Union, providing humanitarian aid with funding mainly from the US. In Belarus, he established the Veterans of Chernobyl Group, a collective that cares for victims of the nuclear disaster.

He was awarded the Minsk Medal as a veteran of Chernobyl, and remembers having to run a Geiger counter over food.

An expired visa led to a return to New Zealand. A strong interest in politics



saw him appointed chief executive of the National Party towards the end of the Muldoon era. He joined a small group of inter-party MPs that would meet and pray together every Wednesday and share a basic breakfast.

David led the inter-party parliamentary weekly prayer meetings in the Beehive kitchen for more than 20 years, during which time their number grew. The role offered pastoral care to MPs from all parties at times of stress and difficulty.

"It started with breakfast and a prayer, and reading and was open to everyone, no matter your denomination or political persuasion," he says. "It has grown significantly but we never divulge who is



there. It's there for people of faith to participate.

"Some have said it's the highlight of their week... a simple meal of cereal, toast and cordial... meaningful conversation, and we pray for each other."

He says it's a chance for MPs to talk with someone from the other side of the House who might have a different view.

David is proud of his service as the national director of the Prison Chaplaincy Service. He is also a past member of the Alcohol Regulatory and Licensing Authority, past member of the New Zealand Parole Board, served as a Wellington City councillor, and is a member of Rotary International.

WE BUY OLD GOLD

BUYING NOW! GET INSTANT CASH!

- gold jewellery • diamond rings • damaged jewellery • anything considered •



Brenmuhls Jewellers Ltd
169 Oxford St, Levin • 06 368 5092



Read the full paper
online and see the
latest stories at
horowhenuastar.com

SUBSCRIBE TO THE STAR
If you live out of district
we can mail you a copy.
Only \$6/week
(minimum 3 months).
Email:
debbi@idmedia.co.nz

MUAŪPOKO
TRIBAL AUTHORITY INC.



Having trouble
getting a doctors
appointment?

Call 0800 4 825 882

Connecting whānau to **FREE**
virtual doctor's appointments!

OPERATING HOURS

Monday - Friday 9am-9pm
Saturday - Sunday 2pm-9pm

**Practice
PLUS**

PIRI'ANGA ALGFA
Pacific and community services
making a positive impact on the life of others



**AFFORDABLE
FENCING
SOLUTIONS**

027 227 2729

FOR ALL YOUR FENCING NEEDS

Call us for a free quote

- Residential
- Rural
- Lifestyle
- All Terrain
- Deer Fencing
- Culverts
- Pole Sheds
- Farm Tracks



Appeal gone, wetland back on

By Janine Baalbergen

Construction of one of New Zealand’s largest wetlands near Punahau/Lake Horowhenua is to start later this year.

An appeal in the Wellington High Court against resource consents granted for the Arawhata Wetland has been withdrawn. Horizons Regional Council says the appeal “has been resolved between the parties.” Horizons will now progress detailed design and construction for the 2025/26 construction season.

The council didn’t elaborate on how the issue was resolved.

Resource consents were granted in November last year, but were then appealed by a neighbouring farmer.

The aim of the wetland is to improve the water quality of the lake, while ensuring that any effects on groundwater are appropriately managed. The project has been boosted by the Mahi mō te Taiao – Jobs for Nature

Horowhenua (Waiopēhu Freshwater Management Unit Water Quality Interventions project).

This support comes from central government funding (\$11.2 million) and Horizons (\$1.3 million).

Water from multiple sources in the Arawhata catchment currently flows onto the site of the wetland. That water contains nitrogen, sediment and phosphorus, which contributes to poor water quality in Punahau/Lake Horowhenua.

The constructed wetland complex will help to reduce the concentrations of pollutants in the water. This, combined with other interventions within the catchment and the lake itself, will improve the water quality within Punahau, Horizons says.

The conceptual design includes a master plan for the constructed wetland complex, with construction split into three phases.

The first phase aims to convert at least 15 hectares of farmland into a constructed wetland complex by December 2026. It will incorporate

plants historically found in the area before its clearance – species such as harakeke (flax), carex, and rushes.

As further funding becomes available the following two phases will be considered. These would extend the constructed wetland complex with new drains, bunds, planting and a walking trail.

At the time of the consent, Horizons chair Rachel Keedwell, who is also co-chair of the governance group that will oversee the project, said the fast-track consenting process was extremely robust.

“While fast-tracking means the process as a whole is sped up and more streamlined, the effects of the proposal put forward are assessed as robustly as they would be through the normal process,” she said. “This will include the proposal being heard by an expert consenting panel to which the Environmental Protection Authority (EPA) provides advice and administrative support.

“This means the application will essentially go through the most stringent critiquing like it would through the Environment Court – by no means is it a way to cut corners.”

Once completed, the Arawhata wetland complex is expected to be one of the largest constructed wetlands in the country, creating improved habitats for native bird and fish species, along with better environmental outcomes through nutrient reduction in the Arawhata Stream, and in turn within Punahau.

The complex will be built on a former dairy farm adjacent to the lake.

The governance group includes representation from the Lake Horowhenua Trust, Muaūpoko Tribal Authority, Te Rūnanga o Raukawa, Horowhenua District Council, Ministry for the Environment, and Horizons Regional Council.



The farm on which the Arawhata Wetland will be built.



COSMOPOLITAN CLUB INC

47-51 Oxford St, Levin

06 368 2571

admin@levincossieclub.nz

levincossieclub.co.nz

**NEW MEMBERS
MOST WELCOME**



Friday 6 June
Entertainment with JUST B
No surcharge

Saturday 7 June
HARMONY SHOWDOWN
Hudson Room 7.30-11.30pm
Tickets \$10 Light supper provided

Sunday 8 June
BBQ from 2pm
ENTERTAINMENT WITH BEVAN

*Celebrate
our
125th Jubilee
with us*



TARARUA RESTAURANT

Tue-Sat 11am-2pm

Tue-Thu 5-8pm

Fri-Sat 5-8.30pm

**Parking • Function room • Bar
• Pool tables • Darts • TAB
• Gaming room • Karaoke and
live bands through the month**





HOROWHENUA DISTRICT
RATEPAYERS & RESIDENTS ASSN

invite you to a public meeting

Monday June 9
5.30-7pm

Te Takeretanga o Kura-hau-po
Levin Library

SPEAKERS:

- Horowhenua District Ratepayers & Residents Assn
- Horowhenua District Council
- Tim Costley, MP for Ōtaki
- Suze Redmayne, MP for Rangitikei

Tea/coffee from
5.15-5.30pm

Water join-up favoured

Horowhenua District Council will join with Palmerston North City Council and Rangitikei District Council to form a new water services entity, while leaving the gate open for Whanganui and Ruapehu district councils to join in.

HDC councillors voted unanimously on Wednesday in favour of forming the new Water Services Organisation (WSO), effectively transferring assets enabling it to borrow more money to build and maintain infrastructure.

The council will be able to borrow up to five times the amount it generates from water services charges – twice as much it can currently borrow.

Mayor Bernie Wanden says it's the right call. "Scale does matter and I am confident we have made the right decision," he says. "It's important we take a long-term view of water services delivery, and while I acknowledge this is a crucial milestone, it is only the start of a challenging journey ahead.

"I know some councils, including Kāpiti and Manawātū, have decided to go it alone rather than join forces with their neighbours. But our analysis convinced us that we can provide more sustainable water services by teaming up with other councils. And in the long term it will be cheaper for ratepayers, too."

The WSO is touted to save the average Horowhenua ratepayer between \$195 and \$300 a year by 2027/28.

The decision is in response to the government's Local Water Done Well policy requiring all councils to deliver sustainable water, either alone or in partnership with other councils.

The council was working to a clock – the government is requiring a plan be submitted by September 3.

Ruapehu and Whanganui councils will decide on their preferred Water Services Delivery Model at their respective meetings on June 25 and 26.



AFFORDABLE HOUSING WORKSHOP SERIES
FOR PRACTITIONERS AND WHĀNAU

How to be a good landlord

Being a landlord in New Zealand comes with a set of responsibilities and legal obligations. If you would like to learn more about key legislation, health and safety standards, effective property management, selecting tenants carefully, tenancy agreements and financial management this would be a useful workshop for you to attend.

JUNE
19

Te Whare Mahana, Levin
Thursday 19 June 4pm to 5.30pm




COMMUNITY AT HEART


GLG guide

By Paul Williams

CARYLANN & STEVE AT LEVIN FOLK CLUB
Carylann Martin and Steve Poulton
Friday 13 June, Horowhenua Scottish Society Hall, cnr Bartholomew Rd/Middlesex St, Levin.
Two supremely talented local musicians are teaming up at Levin Folk Music Club next Friday night. The musical highways of Carylann Martin and Steve Poulton will converge for what promises to be a special night. A multi-talented musician and song writer, Carylann has wowed audiences at festivals and events throughout the country. She is well known for her powerful lead vocals and skill playing keys and "squeeze box". She has featured live several times on National Radio and Māori television. She has received two Gold Guitar Awards, and in 2021 was a finalist in the NZ Country Music MLT Songwriting Awards. Carylann has released five albums, all reflecting her country heart and ability to connect powerfully to the audience through song. Steve is a lifelong musician – and sound and recording engineer – with skills playing many instruments, but his specialty is guitar. He's been a touring artist since the age of 16, travelling NZ, Australia, Europe, Canada and the US, where he lived for nearly 20 years. Highly versatile, he can switch from acoustic finger-style guitar, to open-tuned dobro, to banjo & electric guitar. Steve's rich vocals and blazing guitar performances enthrall and captivate music lovers and guitar fans alike. Doors open 7pm for a 7.30pm start. Light supper at interval before guest artist performance. \$15, members \$10, students \$5. No eftpos.



RUFIOUS WHISTLER AT ŌHAU HALL
Rufous Whistler
Sunday 8 June, Ōhau Hall, 2.30-5pm
A band described as "one of the most compelling new voices in modern folk music" is playing at Ōhau Hall on Sunday (June 8). Rufous Whistler, who debuted at No 2 on the Aria Country charts with their National Panic album, are bringing their alternative country melodies to town as part of an Australasian tour. They're also special guests at the Tussock Music Festival in Gore. The band hails from Victoria, Australia, and have their roots in the Wiradjuri Country. Expect an unforgettable set of music and stories. Door sales \$25. Set-up from 7.30am.



Criticism ‘just noise’ – organiser

By Paul Williams

The man taking credit for organising the burn-outs causing anarchy and chaos in Levin says any criticism is just “noise”.

Speaking to *Horowhenua Star* on the condition of anonymity, he says he organised the mass gathering last year and helped to coordinate their return at the weekend. He calls them “invasions” and says he is considering planning another one next year.

Why? And why Levin? It’s not a town usually synonymous with boy racers, like Hamilton, or Palmerston North.

He says he organised the first event as a way of leaving his mark on his home town, just before a planned shift in residence to Wellington.

“I organised the first one. It was six months work behind the scenes,” he says. “There was backlash from so-called car enthusiasts, so we wanted to organise something that was a bit next level.

“It’s central, and there are not as much cops here compared with places like Hamilton and Tauranga.”

Organising and communication are mostly through social media platform Instagram.

He estimates more than 1000 people gathered on Friday night in Levin, travelling from as far away as Auckland, Tauranga, Gisborne and Masterton, with a large contingent from Palmerston North, too.

“Last year’s invasion left people wanting more. I would say this year was better than last year,” he says.

The man is aware of the widespread condemnation for the invasions, but to him the criticism is just “noise”.



Police in riot gear move south down central Oxford Street (photo Ian Carson), and inset, the man who organised the “invasion”.

“I know there is hate. Everyone is entitled to their own opinion. All that hate is just noise. I get the hate, but it’s just noise.

“That’s what you see. That’s your point of view.

“My mum doesn’t like it. But I’m an adult.”

He says he knew he’d attract the attention of police and he knew they were watching him. A CIB agent knocked on his door last week.

“He said ‘we’re watching what you are doing from here on in.’”

Asked if he felt responsible for the people hurt or seriously injured at the invasions – some

were struck by cars and sent flying while others were run over – he says it’s up to the bystanders themselves to stay further back.

“That is ratshit. I don’t like seeing people hurt. They got to stay back, stay off the road.”

He says he had approached both Horowhenua District Council and Palmerston North City Council about having a designated skid pad or property where they could stage burn-out events. But he was put off by compliance obligations and expense.

“I look at it as a protest. We need a cheap, affordable place to do this, but the thing is there

can’t be all these rules and regulations and standards.”

He warned of more events and more carnage.

“There’s a new generation now that wants more and more and these new laws that are coming in aren’t helping. The new laws are just going to make people want more.”

He says he wanted to repeat last Friday’s event on Saturday night, and again on Sunday night, but it didn’t quite take off.

“It’s our fun at the end of the day. It’s good for our mental health. This isn’t going away and I’m saying that speaking on behalf of thousands.”



KING'S BIRTHDAY BED SALE

ENDS THIS SUNDAY!



24 MONTHS INTEREST FREE*



UP TO **65% OFF**

FREE
2X LAVENDER PILLOWS
WITH EVERY SLEEP SET
VALID TILL: JUNE 8

FREE
LOCAL DELIVERY
ON PURCHASES OF \$999 AND ABOVE WITHIN 15KM RADIUS*
VALID TILL: JUNE 8

FREE
MATTRESS PROTECTOR
ON PURCHASES OF \$2499 AND ABOVE*
VALID TILL: JUNE 8



TE WĀNANGA O RAUKAWA

E Kore Au E Ngaro



KIA RANGATIRA TE TŪ | ENROL NOW FOR SEMESTER TWO

ADVANCE YOUR CAREER. UPLIFT YOUR WHAKAPAPA. STRENGTHEN YOUR MĀTAURANGA MĀORI.

Are you ready to walk a path that celebrates your identity and equips you for the future?

Enrol in one of our **NZQA approved certificate courses**, FREE for NZ citizens or permanent residents.

These courses will support you to gain the confidence to participate at marae, kura or with workplace activities where engagement in te ao Māori is essential.

STRENGTHEN YOUR LANGUAGE. LEARN FROM HOME AROUND WORK AND WHĀNAU COMMITMENTS | 28 JULY

- **POUPOU HUIA TE REO 1** (Level 4, fully online, 20 weeks)
- **POUPOU HUIA TE REO 2** (Level 5, fully online, 20 weeks)

ENHANCE YOUR MĀURI ORA. A TRANSFORMATIVE JOURNEY TO UPLIFT PHYSICAL AND SPIRITUAL WELLBEING | 14 JULY

- **POUPOU WHAKAPIKI MAURI** (Level 4, online, 16 weeks)

This course can be studied individually or delivered to groups of 30+ in person reinforcing the value of whakawhanaungatanga. Contact us for more information.

STAND CONFIDENTLY ON YOUR MARAE. RECLAIM THE VOICE OF YOUR WHAKAPAPA | 1 JULY

- **POUPOU KARANGA** (Level 4, online options, 16 weeks)
- **POUPOU TŪ WHAIKŌRERO** (Level 5, online options, 18 weeks)

These courses can be studied individually or delivered to groups of 30+ in person combining both whaikōrero and karanga. Contact us for more information.

**Gain a NZQA approved
certificate qualification
in 16 -20 weeks!**

**"ALL POUPOU ARE
DELIVERED ONLINE."**



TŪHURATIA NGĀ ARA MĀTAURANGA

SCAN HERE

OR VISIT WANANGA.COM



WHERE MĀTAURANGA MĀORI MEETS PROFESSIONAL EXCELLENCE

Whether you're passionate about our environment, health, arts, storytelling, reo, or leadership — there's a kaupapa for you. Reclaim your cultural confidence while gaining skills to uplift your mahi through one of our semester two papers. Scan the **QR code** to learn more and view the full range of qualifications and papers on offer for study that feeds the soul.

Staying healthy through a Kiwi winter

Winter us here, and many of us start to find it's getting harder to stay well. While cold weather itself won't make you sick, lower temperatures can help bugs to spread by increasing their ability to survive and transmit between hosts and can weaken our immune systems too.

At the same time, shorter daylight hours and colder, wetter weather in New Zealand's temperate climate can make us less active, and mean we seek out more "comforting foods" rather than fresh healthy ones – further weakening our immune systems.

Here are some tips for helping you fight off winter ills and chills over the coming months – and now's a good time to start preparing.

Keep your hygiene up

If Covid-19 has taught us anything, it's that good hygiene plays a big role in preventing us from contracting contagious illnesses. Wash your hands frequently, especially after you've been in public or crowded areas. Cover coughs and sneezing. If you feel unwell, avoid going out to help stop it from spreading to others. If you have any cold/flu/Covid-like symptoms, do regular Rat tests until you are better.

Get your flu shot

The best way to reduce your risk of flu in winter is to get the flu shot, especially if you are older or have other health conditions. It's available now from your medical centres.

Brave the weather and get outside

The winter blues is another cause of feeling below par in the colder months. Shorter, colder days and less time for leisure can add to

feeling low. It does get tricky in those miserable mid-winter months and feels counter-intuitive, but taking the time and making the effort to rug up and get outdoors can work wonders. Vitamin D deficiency commonly occurs in the winter months and can affect mood as well as causing other health issues such as fatigue, muscle weakness or even pain.

Over time, vitamin D is essential to strong bones, muscles and general health. Sunlight on your skin is the best way to help your body produce more (along with some foods like dairy, oily fish, eggs and some enriched foods).

Make time for self-care

Both relaxation and activity are vital to keeping yourself in shape. Getting enough sleep is widely known to aid good health and keep your immune system humming, with the general rule being at least 7-8 hours a night. At the other end of the effort spectrum, daily exercise, as well as meditation, are proven to significantly decrease sickness (for respiratory infection).

Many swear by it for better general health and mental wellness, too.

Eat nutritious foods

Staying well-hydrated and upping your intake of immune-boosting foods and those rich in nutrients will help to keep your body functioning well. Natural, whole, unprocessed foods, like brightly coloured vegetables and fruits, as well as whole grains, are good for the immune system.

Try a hearty warming pumpkin soup made



with a heavy dose of garlic and onion for a highly affordable, easy and delicious way to load up on some nutrition. Try to avoid immune-suppressing substances like alcohol, too.

Treat allergies

Irritation and nasal inflammation caused by any allergies you might have can increase your susceptibility to viruses, so making sure you're on top of them with medication can help you to stay feeling tip-top. This frees your immune system up to focus on other battles, if it needs to.

Warm your home

Your physical environment plays a big role in staying healthy. Rugging up in warm clothes will help your body stay warmer and keep you comfortable, but keeping your living environment warm too has even greater benefits. We all know how important a warm, dry home is, keeping you comfortable and making your home less hospitable to bugs so they don't spread so easily.

There are also ways to do this effectively while

keeping an eye on costs. To keep heating costs down, focus on keeping just the rooms you are using warm, rather than trying to warm your whole house. Keep doors closed, block drafts (like chimney flues and underneath doors) with towels, and cover windows to prevent heat escaping.

Keeping moisture levels down helps reduce the risk of mould and makes air more breathable. Avoid drying wet washing inside, and open a window while you shower or cook, then close everything back up tight again once the moisture has escaped.

Your lungs will thank you.

If you're renting, you have rights that include a house that is well insulated. Talk to your landlord or rental agency to make sure your home is up to scratch.

See a doctor online

If you do end up needing a doctor when you're under the weather, and you have a condition or illness that can be taken care of remotely, there are many benefits of seeing a remote doctor.

Firstly, you avoid clinic waiting rooms and exposure to others with illness, and you avoid having to get out of bed yourself.

An online doctor can support you with diagnosis and treatment for many conditions, and can give you a prescription.

With more people seeing online doctors, waiting rooms are freed up for those who really need them too, a win-win all around. Want to book? Type in "find online doctor" and choose from available listings.

Source – www.bettr.co.nz

ŌTAKI POTTERY CLUB
NAU MAI, HAERE MAI KI

Star
GLAZE

**A MATARIKI CELEBRATION
MID WINTER CERAMICS FESTIVAL
JUNE 20 - 21, 2025 | 10AM - 4PM**

**ŌTAKI RACECOURSE
INDOOR EVENT**

ENTRY: \$5 RACE CLUB FEE ON FRIDAY | KOHA ON SATURDAY

proudly supported by

Kāpiti Coast DISTRICT COUNCIL
Me Huri Whakamuri, Ka Tiro Whakamuri

Kelly.CO REALTY

MRC

Bot Pots Botany Pottery Studio

WWW.OTAKIPOTTERYCLUB.ORG

How well are you sleeping?

Do you experience any of these symptoms?

- Early morning headaches
- Poor concentration
- Loud, persistent snoring
- Daytime sleepiness

You may be at risk of sleep apnoea.

Talk to us about a home sleep test.

Do you have these symptoms? If so, contact our Sleep Consultant now @ Unichem Levin Pharmacy. You will have a diagnosis by a qualified Physician within 5-10 days.
NB: This is not a funded service so charges apply.

Scan the QR code to take the online Sleep Quiz.

Unichem  **Levin Pharmacy**

209 Oxford Street, Levin • 06 368 2560 • pharmacy.levin@unichem.co.nz

WHAT'S ON IN HOROWHENUA

JUNE – JULY 2025

● Levin Event ● Foxton Event ● Shannon Event ● Ōhau Event ● Manakau Event ● District Wide



Pop Up Eats Levin

Every Wednesday 5pm – 8pm
Te Takeretanga o Kura-hau-pō carpark



Quiz Night

Every Wednesday 7pm – 9pm
Te Takeretanga o Kura-hau-pō
\$5 entry



Creative Hands

Every Wednesday 10am – 1pm
Levin Senior Citizens Hall
\$2 Entry



Levin Senior Citizens Association

Every Third Thursday of the month 1.30pm – 3.30pm
Levin Citizens Hall
Membership fees apply



Friday Concerts

Every Friday 12pm – 1pm
Te Takeretanga o Kura-hau-pō



Levin Repair Cafe

Every Second Saturday of the month 10am – 1pm
Levin Senior Citizens Hall



Levin Monthly Market

First Saturday of the month 8.30am – 12pm
Uniting Communities Centre



Te Whare Mahana Monthly Market

Last Saturday of the month 8.30 – 12pm
Te Whare Mahana Community Centre, 32 Bristol Street, Levin



AquaTots Levin

Every Wednesday, 10.30 – 11.15am
Levin Aquatic Centre
\$2.50 child, caregiver free



AquaTots Foxton

Every Wednesday, 10.30 – 11.15am
Foxton Pools, 61-63 Main Street, Foxton
\$2.50 child, caregiver free



Sensory Sessions

Every Tuesday 7pm – 8pm and Saturday 9am – 10am
Levin Aquatics Centre
Regular pool entry



Speak Easy Cocktail Party

Saturday 7 June, 6.30pm – late
Tatum, 850 State Highway 1, Manakau



Rufous Whistler live

Sunday 8 June, 2.30pm – 5pm
Ōhau Hall, Muhunua West Road, Ōhau



Hon. Simon Watts Luncheon

Thursday 12 June, 11.30am – 1pm
Tatum, 850 State Highway 1, Manakau



Benji Patterson Electra BA5

Thursday 12 June, 5.30pm
Te Takeretanga o Kura-hau-pō, Bath Street, Levin



Thomas Loefke - North Atlantic Soundscapes

Saturday 14 June, 7.30pm
Tsunami Lounge 14 Potts Rd, Koputoroa, Levin



Matariki Day Out

Wednesday 18 June, 10.30am – 2pm
Departing Te Takeretanga o Kura-hau-pō
Bookings essential



Te Putanga mai o Matariki – Karakia with Muaūpoko

Thursday 19 June, 5.30am
Cricket Pavillion, Donnelly Park, Levin



Matariki ki Ōtauru

Friday 20 June, 9am – 2pm
Te Maire Park, Shannon



Matariki Pool Party

Saturday 21 June, 3pm – 5pm
Levin Aquatic Centre, Cnr Queen and Salisbury Street, Levin



Taitoko Night Market

Saturday 21 June, 3pm–7pm
Te Takeretanga o Kura-hau-pō carpark, Levin



Pō Kiriata Whānau – Coco the movie in Reo Māori

Tuesday 24 June, 6pm – 8pm
Te Takeretanga o Kura-hau-pō, Bath Street, Levin



Kapahaka Hapori Kai Night

Thursday 26 June, 5pm – 7pm
Waiopahu College Auditorium, 74 Bartholomew Road, Levin



In the Shallows Winter Tour '25

Friday 27 June, 7.30pm – 9.30pm
Firebird Café, 58 Oxford Street, Levin



Kids Market at Levin Intermediate

Saturday 28 June, 9am – 2pm
Levin Intermediate, Collingwood Street, Levin



Foxton Matariki Pool Party

Saturday 28 June, 3pm – 5pm
Foxton Pools, 61-63 Main Street, Foxton



Lights over Te Awahou

Saturday 28 June, 4pm – 8pm
Te Awahou Riverside Cultural Park and Riverloop Reserve, Foxton

Event details are correct at the time of publication, but are subject to change.
Please contact event organisers for updates and registration details if required.

Advertise your event on [Eventfinda.co.nz](https://www.eventfinda.co.nz) for it to appear on the HorowhenuaNZ website.

What's On will be published on the last Friday of each month.

To include your event in this list please email: comms@horowhenua.govt.nz.

For further details and other events, please visit horowhenuanz.co.nz/events

HOROWHENUA

Like tea with a favourite gran

I was on a walk one grey Sunday morning when I stumbled upon the audiobook version of *The Swedish Art of Aging Exuberantly*.

I had typed “something light but profound” into the search bar of my phone, and up came this gem. The title is cheeky enough to spark a smile, but it was the voice of Margareta Magnusson (at right) – kind, warm, a little mischievous – that pulled me in. It felt less like listening to an audiobook and more like having tea with a favourite grandmother, who knew all the best stories and wasn’t afraid to tell them with brutal honesty and a twinkle in her eye.

The book doesn’t preach. It pokes, nudges, and sometimes surprises you into clarity. I didn’t expect to be so moved, or so gently challenged. These are eight lessons I walked away with, each one lingering in its own quiet but powerful way:

1. Don’t wait to be invited to life

Margareta makes it painfully clear that aging doesn’t have to mean shrinking away. At one point, she talks about friends who stopped accepting dinner invitations because they didn’t feel “fun” anymore. That image stuck with me. Why do we wait for someone else to tell us we belong? Her voice – dry but affectionate – dared me to stop apologising for growing older or quieter, and to start showing up anyway. That lesson is gold for anyone who’s ever doubted they were still “interesting enough.” Life doesn’t RSVP for us. We show up, or we miss it.

2. Be brave enough to start over (at any age)

The way she tells stories about moving houses,

getting rid of things, or finding new routines made me pause. I realised how often I cling to what’s familiar simply because it’s old.

She’s refreshingly honest about how starting again can feel awkward—but also freeing. If someone in their 80s can start over with curiosity instead of dread, what excuse do I have? It made me look at change not as a threat, but as an invitation to do life better.

3. Small joys are not small

She describes the joy of clean sheets, fresh flowers, or the perfect cup of coffee with such affection that you realise these “little” things are actually the building blocks of a contented life. There’s a line where she sighs over the beauty of candlelight, and I remember laughing out loud – because only someone who really knows what matters can be that sincere about ambiance. This lesson shifted something in me. I now light candles just because. I savour my tea instead of gulping it. Anyone can benefit from this reframing of what it means to have “enough.”

4. Declutter with love, not regret

Margareta revisits the idea of Swedish death clean – clearing out your belongings to spare others the burden after you’re gone – but this time, it’s less about death and more about dignity. The way she talks about choosing what to leave behind made me think of legacy in a deeper way. It’s not about being remembered as tidy; it’s about being remembered with kindness. I cleaned out a box of old letters and cried. Not out of grief, but out of gratitude. This is a powerful message for anyone wanting to live, and leave, thoughtfully.

5. Humour is a survival Tool

There’s something magical about how

Margareta can talk about grief, loneliness, or the oddities of an aging body, and still make you smile. Her humour isn’t forced – it’s wise. She finds delight in absurdities, and that attitude is a choice. It reminded me that laughter doesn’t mean you’re not taking life seriously – it means you’re strong enough to carry it lightly. That’s a lesson worth learning at any age.

6. Friendship deserves maintenance

One chapter hit a nerve: she confesses that friendships can fade not because of conflict, but because of neglect. That gentle truth sat with me for days. I thought of people I love but rarely call. She encourages us to reach out without drama; just a postcard, a walk, a silly text. The lesson is clear: nurturing friendship is a quiet act of defiance against loneliness.

7. Your age is not your identity

Margareta tells stories of things she did at 70 or 80 – things some people think belong to “younger” folks. Traveling, learning, painting. She scoffs at the idea of acting your age. Her tone when she says, “It’s only a number, and a number is boring,” made me laugh, but also rethink my own self-limiting beliefs. This lesson is particularly freeing: you’re not too old for joy, for movement, for dreams. Let’s stop measuring life in birthdays, but in boldness.

8. Be curious about the future

What struck me most was how curious she still is – about trends, people, art, technology. She doesn’t sit in the “good old days”. She leans forward. That mindset is contagious. I’ve started asking more questions, watching new films, even trying out TikTok (don’t ask). Her point is simple: as long as we’re breathing, there’s still more to learn. And isn’t that kind of wonderful?

Review from Reading Life

AN INTRODUCTION TO ‘DEATH CLEANING’

In her international bestseller, *The Gentle Art of Swedish Death Cleaning*, Margareta Magnusson introduced the world to the Swedish tradition of *döstädning*, or “death cleaning”, clearing out your unnecessary belongings so others don’t have to do it for you.

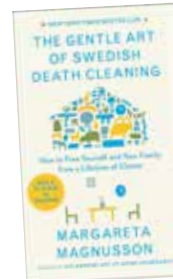
Now, unburdened by (literal and emotional) baggage, Magnusson is able to focus on what makes each day worth living. Her new book, *The Swedish Art of Aging Exuberantly*, offers humorous and charming advice for embracing life and aging joyfully. She reveals her discoveries about aging, some difficult to accept, many wondrous. She reflects on her idyllic childhood on the west coast of Sweden, the fullness of her life with her husband and five children, and learning how to live alone. Throughout, she

advises on how to age gracefully – wear stripes, don’t resist new technology, let go of what doesn’t matter.

As with death cleaning, it’s never too early to begin and it shows how to prepare for and understand the process of growing older and the joys and sorrows it can bring.

While Magnusson still recommends decluttering, her ultimate message is that we should not live in fear of death, but rather focus on appreciating beauty, connecting with our loved ones, and enjoying our time together.

Wise, funny, and eminently practical, *The Swedish Art of Aging Exuberantly* is a gentle and welcome reminder that, no matter your age, there are always fresh discoveries ahead.





Is your hearing a catastrophe?

Let us help you get back to great hearing.

Starting from \$0.00 per hearing aid with government subsidy.

All types and models available.

Compatible with iPhone and most android devices.

Locally owned and operated for 35 years.

Palmerston North | Levin | Dannevirke | Whanganui

For an appointment phone

0800 55 11 77



Community Connection

Issue 218 JUNE 2025

Horowhenua
DISTRICT COUNCIL



Bernie Wanden

Message from the Mayor

Kia ora Horowhenua,

As I write this, Council is getting ready to make one of the biggest decisions of this triennium – how our water services will be delivered.

Under the Government's Local Water Done Well policy, we need to figure out whether we'll join with other councils to deliver water services, or continue managing it ourselves. It's a big deal because safe, reliable, affordable water is something every person in our district needs. We'll keep you updated about the decision, and you'll find more details about this elsewhere in this issue.

Another big talking point lately is the proposed changes to the Ō2NL expressway, especially removing the Manakau overbridge and changing the Tararua Road interchange to a roundabout. From what I've heard around town, many of you aren't happy, and neither am I. The NZTA board will meet soon to finalise these plans, so now's the time to speak up. If you'd like to have your say, you can email the Minister directly (Chris.Bishop@parliament.govt.nz) and the board at (boardsecretariat@nzta.govt.nz).

It's always fantastic seeing our community speak up strongly, and we saw that recently when Youth Voice Horowhenua and members of the Access & Inclusion Committee presented at Horizons Regional Council's Annual Plan hearings. They made clear, powerful arguments for better public transport options and improved accessibility around the Horowhenua district. I'd like to acknowledge those who presented at the hearings. Your efforts make a huge difference, and we're all incredibly proud of you.

Every week, across our district, hundreds of people, from little league to seniors, take to the fields, courts and pitches to enjoy sport. Council is proud to provide and maintain the parks and recreation spaces where these games take place. But it's our local clubs, volunteers and referees who bring these places to life.

Referees are the unsung heroes of our sporting community. They give up their time so that our children and young people, friends and whānau can play. Without them, the game doesn't go ahead. And yet, far too often, they are on the receiving end of abuse from participants and from the side lines.

I am jumping on the Horowhenua Kāpiti Rugby Union bandwagon where they announced last week that senior rugby games will be cancelled for one weekend, should the abuse of referees continue. Let's take a stance, all of us, the abuse of referees in all sporting codes has to stop. We all have a role to play in protecting the spirit of sport. If you see someone abusing a ref—call it out. Stand up for respect. Our referees deserve support, not hostility.

Sport is about teamwork, fairness and community. Let's make sure our behaviour reflects those values. So whether you're playing, coaching or cheering from the side lines—remember: Respect the Ref. Without them, there is no game.

Finally, Matariki is almost here which means plenty of events to enjoy right across the district. It's a time to reflect, remember and celebrate. As the Māori New Year, it marks the rising of the Matariki star cluster and is a moment to honour those who have passed, give thanks for the present and set intentions for the year ahead. Celebrating Matariki brings communities together and strengthens our connection to the land, each other and the rhythms of nature. The Matariki Project Team has pulled together a fantastic programme of events, check out page 2 for all the details—I'm sure you'll find something special to enjoy.

Ngā mihi

Mayor Bernie Wanden

Council Meetings



Te Awahou Foxton Community Board Public Forum

Monday 9 June 2025, 5.30 to 6pm
Foyer, Te Awahou Nieuwe Stroom,
92 Main Street, Foxton



Te Awahou Foxton Community Board Meeting

Monday 9 June 2025, 6pm to 8pm
Ngārongo Iwikātea Room,
Te Awahou Nieuwe Stroom,
92 Main Street, Foxton



Hearings and Regulatory Committee Meeting

Hearing of submitters, Dog Control Policy and Bylaw
Tuesday 10 June 2025, 10am to 12pm
Council Chambers, Horowhenua District Council, 126 Oxford Street, Levin



Extraordinary Council Meeting

Adoption of the Shannon Community Plan
Wednesday 18 June 2025, 4pm
Shannon Memorial Hall, Grey Street, Shannon



Council Public Forum

Wednesday 25 June 2025,
10.15am to 10.45am
Council Chambers, Horowhenua District Council, 126 Oxford Street, Levin



Council Meeting

Wednesday 25 June 2025, 11am
Council Chambers, Horowhenua District Council, 126 Oxford Street, Levin

Meeting dates and times are subject to change. Please refer to horowhenua.govt.nz/Council/Council-Meetings for the full meeting schedule, minutes and agendas.

In the Works

Our contractors are continuing to lay new water and wastewater pipes in Margaret and Bryce Streets in Shannon. This important work is going well.

In Levin, we're working our way down MacArthur Street, also to replace old water and wastewater pipes. The first stage from Cambridge Street to Queenwood Road is complete, and work has now moved to the length of road between Queenwood and Bartholomew.

We know the delays and works can be frustrating for residents, but we think you'll find it worth it as new pipes are essential to ensure our network is

well managed. The new pipes provide capacity for growth, stop leaks and prevent major issues like pipe bursts in the future.

NZTA is also hard at work, with night-time works about to start to connect three new 'legs' at the new roundabout at the intersection of SH57 and Tararua Road. Detours will be in place.

And some good news about some work we're recently completed: flooding near the roundabout on Waitārerere Beach Road should be a thing of the past after extensive stormwater upgrades.



Puanga Matariki

Matariki 2025 Calendar

JUNE

Matariki Swim Challenge

Take on the free Horowhenua Marae-to-Marae Swim Challenge, where every 0.5km lap brings you closer to a new Marae, complete with a photo and story sent to your inbox.



**Sunday 1st June –
Monday 30th June**

Matariki Pōhutukawa Remembrance Walls

Visit any of our libraries to add a paper star to the display boards in memory of loved ones, as we reflect on those we have lost during Matariki.



Monday 16th June – Sunday 29th June
**Te Takeretanga o Kura-hau-pō, Te Awahou Nieuwe Stroom,
Shannon Library**

Matariki for Tamariki

Join us in a celebration of Matariki led by Punahau Early Childhood Centre.



Tuesday 17th June
10.30am – 11.30am
Te Takeretanga o Kura-hau-pō

Matariki Day Out

Bus trip from Te Takeretanga o Kura-hau-pō to Tokomaru to celebrate and learn about Matariki. Registrations required. Limited capacity.



Wednesday 18th June
10.30am – 2pm
Departing Te Takeretanga o Kura-hau-pō heading to Tokomaru Hall

Te Putanga mai o Matariki

Wrap up warm and bring the whānau down to join Muaūpoko for a hautapu ceremony to welcome in Matariki.



Thursday 19th June
5.30am
Cricket Pavillion, Donnelly Park, Levin

Matariki ki Ōtauru

Celebrate the Māori New Year in Shannon with Ngāti Whakātere.



Friday 20th June
9am – 2pm
Te Maire Park, Shannon

Matariki Levin Pool Party

Celebration with music, inflatables, hydro slide and free BBQ.



Saturday 21st June
3pm – 5pm
Levin Aquatic Centre

Taitoko Night Market

A vibrant celebration of culture and community. Enjoy market stalls, food trucks, music, fire poi, whakairo displays, traditional Māori games and more.



Saturday 21st June
3pm – 7pm
Te Takeretanga o Kura-hau-pō and Levin Mall Carpark

Puna Kaukau

Join us for a karakia to acknowledge the whetū (star) Waitī, the awa (river) and Matariki before taking a refreshing mid-winter dip in the river.



Sunday 22nd June (postponement date Sunday 29th June)
5.45am – 7.30am
Gladstone Reserve

Pō Kiriata Whānau

A free screening of beloved kids film Coco Reo Māori.



Tuesday 24th June
6pm – 8pm
Te Takeretanga o Kura-hau-pō

Friday Konohete

Enjoy a special Friday concert from a range of groups coming together to perform kapa haka and waiata.



Friday 27th June
12pm – 1pm
Te Takeretanga o Kura-hau-pō

Kapahaka Hapori Kai Night

A free celebration of kapahaka showcasing talent from our primary school-aged tamariki through to our kaumatua.



Friday 27th June
5pm – 7pm
Waiopahu College Auditorium

Foxton Pool Party

Celebration with music, inflatables and free BBQ.



Saturday 28th June
3pm – 5pm
Foxton Aquatic Centre

Lights over Te Awahou

Come and celebrate Puanga's arrival with delicious food, live music, and stunning light displays.



Saturday 28th June
4pm – 8pm
Te Awahou Riverside Cultural Park

THE 2025 HOROWHENUA MATARIKI EVENT PROGRAMME PROUDLY BROUGHT TO YOU BY:

MUAŪPOKO
TRIBAL AUTHORITY INC.



Te Takeretanga
o Kura-hau-pō
Horowhenua Culture & Community Centre



Horowhenua
DISTRICT COUNCIL



TE TŪMATAKAHUKI
NGĀTI RAUKAWA TE AU KI TE TONGA



TE ROOPU TAIAO O
NGĀTI WHAKĀTERE TRUST
MAURI WAI, MAURI WHENUA, MAURI TANGATA MAURI ORAI

Photo by: Kris Adams

OPINION: DAN OKATO

Why we shouldn't hand over our water services

Horowhenua District Council voted recently to join a new regional water entity, even though its structure remains uncertain and neighbouring districts have yet to commit.

This decision will centralise control of water services under a corporate-style board, weakening local voice and increasing the distance between ratepayers and decision-makers. I believe one of the biggest drivers behind this move was debt. Between 2015 and 2021, the council elected to not collect Developer Contributions (DCs), resulting in a significant amount of lost revenue that I believe has contributed to a significant portion of our current debt.



Between 2015 and 2021, Horowhenua's population grew from about 32,000 to 36,500, an increase of about 14 percent. During the same period, New Zealand's national population grew by 11 percent. Despite above-average growth, HDC eliminated development contributions entirely. Horowhenua was an outlier. No other council in New Zealand fully removed DCs during a period of population growth. The result? The financial burden shifted from

developers to ratepayers. It wasn't the norm, and deprived our provincial community of a much-needed revenue stream. Revenue that might have made the difference in retaining control of our own water assets. Instead, we're being told amalgamation is our only option. We have elected the current council to sit behind the driver's wheel, but the wheel they are meant to steer has been locked in place by decisions made years ago. Supporters argue that centralisation improves efficiency, but the reality tells a different story. Take Watercare in Auckland, New Zealand's largest and most centralised water provider. Despite its size and resources, it struggles with persistent service

failures and widespread leaks. Meanwhile, Aucklanders face some of the highest water bills in the country, and development is being choked by wastewater infrastructure shortfalls. If centralisation really worked, Watercare would be the gold standard. Instead, it's a warning. International examples are worse. In England, water centralisation and privatisation led to soaring bills, worsening pollution, and billions paid to shareholders. Even New Zealand's auditor-general warned that the Three Waters model "risks weakening accountability to the public". This model carries serious risks:

- we lose the right to vote out those managing our water
- we may be exposed to other districts' debt
- we lose transparency over how our money is spent.

Horowhenua residents deserved a say in this process. Instead, we were presented with a single, unavoidable outcome shaped by years of financial mismanagement. Yes, we need investment. Yes, we need resilient infrastructure. But we don't need to give it away to get it. The answer isn't centralisation. It's accountability. Financial discipline. And local leadership that puts ratepayers first. Let's bring back common sense and focus on practical, balanced growth, where smart infrastructure supports a thriving, sustainable district.

■ *Dan is a candidate for Waiopahu Ward at the October local body election*

KŌRERO MAI | A KUKU: DR HUHANA SMITH

No more deaths on our road

It read: Green Tick 80km = NO MORE DEATHS ON OUR ROAD.

This was one of the many fence banners painted by members of Ngāti Tukorehe of Kuku at the weekend reflecting our feelings for pending speed limit increases and what this might deliver for those who live between Ōhau and just beyond Manakau.



Therefore, on Monday morning we festooned SH1 with an extensive visual appeal against reasoning that has enabled faster speed limits for this notorious stretch of bitumen, gravel, barriers and reflectors.

In 2021, when the speed limit was reduced to 80km/h, we witnessed a sharp drop in deaths or serious injuries from car accidents. The frequency of gridlocks also significantly reduced. In the bad times, our whānau would be out offering cool refreshments in summer to those trapped bumper-to-bumper in their cars due to an accident that brought all to standstill. It's no wonder our interrelated communities remain dismayed by the decision to increase speeds, as we have long-lived realities about this treacherous stretch of highway where excessive speed has been a dominating safety concern. However, collective local concerns have been seemingly subsumed by the nationalised response to Waka Kotahi NZTA's survey. Hence, we converged at Tukorehe Marae to paint signs and safely adorn whānau-block fences with placards and signs. We later held a peaceful protest at Wehiwehi Marae, Manakau.

Perhaps Waka Kotahi will recapitulate if more accidents kill, maim and have traffic at a standstill again, impinging upon positive productivity scenarios or the economic growth imperatives as cited reasons for speed increases.

With dates for changes looming as quickly as June 9, the incredulousness that Taitoko/Levin residents must be feeling, what with a recent boy racer convergence by stealth, descending upon the town centre to reconduct burn-outs, leave bystanders injured, smear SH1 with burnt rubber, blown-out rubber tyre debris, tangled wires and shattered glass.

More road woes have arisen with critical community concerns reverberating on the impact of proposed design changes to ŌN2L, especially for Manakau.

Add in a new accessway to Waikawa beach, where instead of residents and visitors walking within nature, drivers or riders will again take to this sensitive coastline. In 2013, kaitiaki from Ngāti Tukorehe and local Kuku businesses worked together to create the Kuku Ōhau Beach car park with a locked gate. With a limited number of registered keys (administered by Tahamata Incorporation farm), this enabled fishing, whitebaiting and shellfish gathering to continue without being beset by destructive vehicle access.

We are slowly but surely replenishing this most sensitive of coastal regions, supported by local and regional council grants, with hands-on staff support, and with local neighbouring environmental groups assisting.

Cars, roads, or what I consider inappropriate vehicle access on local beaches, are not my favourite topics, but in recent weeks they have loomed large.

So my advice is, despite what the speed limit says, maintain that cruise control on 80km beyond Levin to past Manakau, enjoy a sunrise/sunset walk on your local beach, leave the car in garage and get on your bike.

But most of all, stay safe out there.

■ *Huhana (Ngāti Tukorehe) lives at Kuku.*

THE ELECTORATE: TIM COSTLEY

The idiots were out on a Friday night

We had idiots out on Friday night trying to take over Levin with outright dangerous behaviour.

People were hit and seriously injured by cars, which is why I keep saying, "don't go and watch these and don't let your kids go.

Our police did a fantastic job, and quickly dispersed these unwanted hoons and drove them out of town. They saved many more injuries, more disorder, and more damage to our town. I'm grateful to all of them.

Friday morning was better news. Transport Minister Chris Bishop and I announced that we will be consulting on increasing the speed limit on SH1 Transmission Gully and Raumati Straights to 110km/hr.

This then connects to the Kāpiti Expressway which is already at 110km/hr all the way to Ōtaki. This proposed speed increase would reduce the travel time for the 22,000 vehicles using Transmission Gully daily and increase productivity for businesses across our region and further north.



As always, safety is paramount in these decisions. Transmission Gully was designed and constructed to a high safety standard and this is reflected in the low crash numbers on the road since opening in 2022. It has safety features that greatly reduce the risk of death or serious injury in a crash, like two lanes in each direction, and flexible median barrier between opposing lanes. Since opening, there have been over 150 barrier strikes but no deaths. Please share your thoughts and I will present our results to NZTA: www.national.org.nz/tgrs110 I want our region to be supported by the safest, most efficient transport network in the country. That's why I'm also fighting for changes to the Ōtaki to

North of Levin section of road (Ō2NL). I'm disappointed by changes that NZTA has recently announced for Ō2NL, particularly the removal of the interchange Tararua Road, the southbound onramp at Taylor's Road and the bridge at Manakau Heights. None of these decisions are made by me or any MP. They have been suggested by NZTA staff and still need to be approved by the NZTA board. I have not given up on fighting for the best outcome here. Changing Tararua Road interchange from a full grade-separated interchange to a roundabout will cause congestion on SH1 and Tararua Road as traffic tries to enter and leave Levin. It also means cyclists and pedestrians have to cross SH1 at this roundabout to reach the shared pathway or Tara-Ika. This is the gateway to Levin and should be the top priority for smooth, safe traffic flows and improving our world-class expressway. Send me your thoughts here: www.national.org.nz/levingateway

■ *Tim is MP for the Ōtaki Electorate*

ON THE HORIZON: EMMA CLARKE

Ō2NL changes a 'kick in the guts'

The recent announcement from NZTA that Ō2NL will no longer proceed as proposed was a major kick in the guts for our district.

The Horowhenua region has waited for more than a decade for Ō2NL to proceed.

In this time, NZTA has bought up a significant amount of land, and homes. People's lives have been disrupted, and lives have been lost as we have lived with sub-standard roading infrastructure.

We watched as Transmission Gully came to fruition, we saw the Kāpiti expressway progress, all the while feeling like the wait was all going to be worth it.

To learn that there is now going to be a 20 percent differential as NZTA penny pinches to meet budget



constraints has perhaps changed that point of view for many. I am sure no-one expected the madness that has now been proposed. Firstly, an enormous amount of taxpayer dollars has already been spent on design, on consultants too long to list, on the consent process, and on the Environment Court. Taxpayer money has been used to buy up land and homes to facilitate a proper fit-for-purpose interchange and to allow for four lanes up until traffic could split off and either go east or north up their respective state

highways. The initial design allowed for future growth. The new plan as proposed is going to cause the kind of congestion that will not only directly impact on productivity, but also potentially cost lives – the very reason it was to be built was to reduce congestion and save lives. This is just not good enough. This project will never cost any less than it does today. Well designed and properly funded infrastructure is part of a district's, region's, or country's success, and we should not be short-changed here in the Horowhenua just because we are the last piece in the puzzle. Ō2NL has been listed as an infrastructure project of national significance. Its funding envelope should reflect that.

■ *Emma is a Horizons regional councillor*

Polls show political scene evenly poised

This week’s political polls are for the coalition government an indication that at this time of the political cycle it is tracking at a reasonable level with good prospects of being able to pull together a government at next year’s election.

Radio New Zealand informed its listeners that the result of its poll meant that with the numbers of party support added up, the combination of Labour, the Greens, and Te Pati Maori (TPM) would have a one-seat majority in Parliament. TVNZ had the coalition members slightly ahead.

On numbers alone there is a dominant degree of level pegging going on. A greater degree of reality would be available if those polled were asked whether they would vote for Labour if they believed it could get there only in a coalition with the Greens and TPM under their present policy settings.

The answers would be most useful for Labour as it gets closer and closer to policy decision-making time on taxation issues. The Greens and TPM want a wider spread of taxation on capital gains and accumulated wealth, while Labour, wisely, has yet to declare its hand.

The most significant problem the party has is to find a means of obtaining a sufficiently high percentage of votes to be able to play NZ First and the combination of the Greens and TPM against each other on policy considerations.

This percentage probably needs to be in the order of 40 to 42 percent. It’s an extremely high bar. And its negotiating position is hampered by the need going into an election to have its financial policies well publicised and promoted.

If it goes for a higher spread of wealth taxes

and a capital gains tax it might well find NZ First implacably opposed. Leave these out of the policy mix and the Greens and TPM might object.

National, in comparison, has a much more certain path to electoral success.



POLITICS

BRUCE KOHN

It can depend on Act and has developed a good working relationship with NZ First. The middle-of-the-road policies of National can readily be modified to fit with its partners. Act can function as a brake on NZ First’s more Labour-light tendencies, while NZ First argues well internally against some of Act’s more strongly free market moves.

Even the Radio NZ poll, while placing the number combination of Labour, TPM and the Greens ahead of the coalition, had the governing group only one parliamentary seat behind.

It all points to the country entering an election year with the political scene evenly poised. The coalition is probably ahead in that it has done much heavy lifting of unpopular decisions it considered necessary. Interest rates are on a downward spiral and business investment is beginning to pick up.

Reports from Auckland indicate that TPM president John Tamihere has initiated discussions within his party about the necessity to align more closely with Labour and moderate its intense rhetoric. This development comes at a noteworthy time.



It might be that Te Pati Māori president John Tamihere, above left, is working with his “old mate”, Labour’s Willie Jackson, to produce a path to agreement between TPM and Labour. Photos supplied

It might be that Tamihere working with his “old mate” Willie Jackson in Labour can produce a path to agreement between TPM and Labour. But the broad issue is whether the party’s parliamentary leadership can stomach the thought of a little less flamboyance and verbal gunpowder and more genuine policy development. The failure of the leadership to turn up for the budget presentation did little to help widen public appeal beyond their core constituency.

In a wider context, NZ first sits well poised. Shane Jones’s eager pursuit of greater oil and gas exploration has been subjected to trenchant criticism by the Greens, but this has not

detracted from party support, as reflected in the polls. Awaiting action is decision making on access to conservation land for a more comprehensive programme of research and development around rare earth and other precious metals.

The readiness of voters to accept that the drive for economic growth to support more social spending covers a willingness to take a less rigid approach to environmental issues than under the Ardern-Hipkins government, is about to be assessed.

■ Bruce has been an economics and business editor, and a foreign correspondent in Washington, London and Hong Kong.

Sam looks south for new role

By Janine Baalbergen

Sam Ferguson is aiming for a new role, with a new council.

He’s signing off as Horizons Regional councillor representing Horowhenua after two terms, and plans to run for the Kāpiti seat at Greater Wellington Regional Council. He recently moved back to Kāpiti, where he grew up.

Sam was instrumental in getting Māori wards at the regional council.

“I pushed for that because iwi and hāpu wanted it,” he says. “The Māori ward councillors offer great insight, have good connections in the community and help us make good decisions.

“The matauranga Māori way of thinking really resonates in the work Horizons do. It offers a much broader perspective.”

He was involved with the Manawātū Rivers Leaders Accord for 10 years and managed to bring Massey University expertise on board.

He says he was “over the moon” when elected in 2019, but warns anyone contemplating running for regional council that it is a journey.

“You must learn a lot; about how councils work, legislation and policies.”

He also says it’s not easy if you have a family and a mortgage, and work long hours on what effectively is half pay.

He says he has tried to put relationships with the community and its leaders first in his role.

“It is important and you must also listen to those you do not agree with. They have the right to be heard.

“When you think about it, there’s much more we agree on, than we disagree on. You need to find the points of common ground.”

He says councillors have to deal with rules central government sets, and they can’t break those rules.



Sam Ferguson. Photo Janine Baalbergen

“The government launches multibillion-dollar budgets without any consultation, while we consult a lot with our communities. Central government also makes life hard for local government.”

He’s pleased to have been involved in getting more train services into Horowhenua.

“We have a great plan for more busses, but not funding as yet.”

He says the management plan for the Manawātū Estuary is an “amazing” piece of work and has brought many people together.

Sam was also a driver behind the Arawhata wetland that will play a key role in cleaning up the water quality in Punahau/Lake Horowhenua.

“That is something we can all be proud of. One day we’ll have a predatory free sanctuary, too.”

He says if he gets a seat on the Wellington regional council he will still focus on the same issues that had his passion at Horizons – nature and water quality.

1

Speed limit consultation

We’re proposing new speed limits on Transmission Gully and Raumati Straights. Both these sections have a speed limit of 100km/h. We’re keen to hear what you think about our proposal to increase the speed limit to 110km/h.

NZ TRANSPORT AGENCY
WAKA KOTAHĪ

Te Kāwanatanga o Aotearoa
New Zealand Government

For more information and to have your say, visit:
www.nzta.govt.nz/tgspeed

» 79 Kawi Road LEVIN

ASKING \$625,000



SPACIOUS AND SO WELL SITUATED

Set on an expansive 814m2 section in one of Levin's most sought-after streets, this impressive 210m2 home offers a superb blend of character, comfort, and space, both inside and out. Gleaming native timber floors enrich the open-plan living area, paired with plush new carpet in the three well-sized bedrooms. Double garaging is sure to please.

Ref : www.wiltonandco.nz/WILO1878
OPEN HOME SUNDAY 11.00AM - 11.30AM

Adriana Wilton
0297766902
adriana@wiltonandco.nz

» 1 Hokio Road HOKIO BEACH

AUCTION



COASTAL PROJECT - AUCTION

If you're ready for a serious renovation this tucked-away property just minutes from the shoreline could be your next rewarding project. Set on a 1,191m2 section at the end of the road, privacy and potential go hand-in-hand here. The 110m2 home is in poor condition - there are some broken windows allowing some extra greenery into the home and the once-loved deck has seen better days. The grounds are overgrown, and the home needs a full-scale remodel and upgrade, or demolish it to make way for something new. An attached carport adds to the footprint, offering extra space for storage or future plans.

Auction 10am, 16 June 2025, Wilton & Co, 530 Queen Street East, Levin

Ref : www.wiltonandco.nz/WILO1882
VIEW BY APPOINTMENT ONLY

Adriana Wilton
0297766902
adriana@wiltonandco.nz

» 11 Duke Street LEVIN

BY NEGOTIATION



FAMILY FIRST WITH GUEST SUITE

If you're seeking a home that combines generous space, sun-filled living, and versatile design, this one delivers it all. Perfectly suited for a growing family, this property has been thoughtfully designed to offer effortless living and entertaining. At the heart of the home is a stylish modern kitchen featuring quality appliances, ample bench space, and a large pantry. The open-plan dining and living area is bathed in natural light and highlighted by a stunning feature wall. With four bedrooms, including the private guest wing with its own bathroom and lounge this home offers so much. Be sure to view!

Ref : www.wiltonandco.nz/WILO1911
OPEN HOME SUNDAY 12.30PM-1PM

Adriana Wilton
0297766902
adriana@wiltonandco.nz

» 35 Elizabeth Street LEVIN

BEO \$679,000



DOUBLE THE OPPORTUNITY

Live, Rent, or Work from Home! A rare find - two dwellings on one title, offering unmatched versatility for extended families, investors, or those seeking the ideal work from home setup. The main house features modern living with open plan living, three bedrooms and an internal access garage. The rear flat is fully self contained with one bedroom plus an office space and is private from the front house with its own access. This is the perfect property for extended family, rental income or work from home. Be sure to view - this property offers so much.

Ref : www.wiltonandco.nz/WILO1905
OPEN HOME SUNDAY 11.45AM-12.15PM

Adriana Wilton **David Campbell**
0297766902 0224127700
adriana@wiltonandco.nz david@wiltonandco.nz

» 39 Winchester Street LEVIN

BY NEGOTIATION



FANTASTIC FIRST HOME, EXCELLENT GARAGING

If you're searching for the perfect first step onto the property ladder, this well-presented three-bedroom home is a standout! Set on a 726m2 corner section with dual access, it offers space and sunshine. Inside, the open plan kitchen, dining, and lounge area creates a welcoming hub and flows out to a covered deck - ideal for entertaining or enjoying a quiet morning coffee. The kitchen has been freshened with new cupboard doors, there is a pantry and stove with gas hobs. New carpet throughout gives the home a fresh and inviting feel and a heat pump ensures year-round comfort. The main bedroom opens out to a deck.

Ref : www.wiltonandco.nz/WILO1912
OPEN HOME SUNDAY 1.15PM-1.45PM

Adriana Wilton **David Campbell**
0297766902 0224127700
adriana@wiltonandco.nz david@wiltonandco.nz

» 60 Easton Way LEVIN

BY NEGOTIATION



EXECUTIVE EXCELLENCE

For the discerning buyer who values privacy, quality, and space, this immaculately presented four-bedroom residence is the perfect match. Nestled in a quiet, established neighbourhood, this home offers refined living in one of Levin's most desirable locations. From the moment you step inside, the attention to detail and thoughtful design is evident. A formal lounge provides a quiet retreat, while the open-plan kitchen, living area and dining area all seamlessly flows to a secluded patio featuring an outdoor fireplace - ideal for entertaining or relaxing in style. The kitchen is the heart of the home, complete with an island bench, generous storage, and a clever servery window.

Ref : www.wiltonandco.nz/WILO1908
OPEN HOME SUNDAY 2PM-2.30PM

Adriana Wilton
0297766902
adriana@wiltonandco.nz

» 15 Homewood Avenue LEVIN

BEO \$898,000



ARCHITECTURAL ELEGANCE

Tucked away at the end of a quiet cul-de-sac, this architecturally designed home is a true standout - understated from the street, yet breathtaking once you arrive. Set on a generous and private section, this striking property has been crafted with style, light, and modern living in mind. From the moment you step through the impressive timber front door into the expansive entrance foyer, complete with skylights that flood the space with natural light, you will feel the sense of something truly special. Designed to capture the sun, the north and west-facing living areas are bathed in light, with floor-to-ceiling sliders that blur the line between indoors and out.

Ref : www.wiltonandco.nz/WILO1895
OPEN HOME SUNDAY 1.15PM-1.45PM

Adriana Wilton
0297766902
adriana@wiltonandco.nz



» 24 Grey Street **SHANNON**

2 1 1 1

Cosy starter on a large section

Here's your chance to step onto the property ladder with this two bedroom home situated on a generous 1000m2 (more or less) section, there's plenty of room for kids to run, play, and explore. Th galley-style kitchen has been updated, and a warm, welcoming living area is equipped with both a log burner and heat pump for year-round comfort. Whether you're a first-home buyer, or have a flair for DIY, this property is for you.

BUYER ENQUIRY OVER \$390,000
OPEN HOME SUNDAY 11AM-11.30AM
Ref : www.wiltonandco.nz/WIL01881
Lynaire Cottle 0272224017



» 224B Cambridge Street **LEVIN**

2 1 1 1

For the creative minds

Tucked away in a quiet, private position, this delightfully different home is brimming with charm and personality - the perfect sanctuary for an artist, writer, or anyone who appreciates unique design. Inside you will be inspired by the soaring high ceilings, incredible natural light, and generous living spaces that invite creativity and calm. A whimsical, storybook-style staircase adds a touch of magic, leading to two bedrooms.

BUYER ENQUIRY OVER \$499,000
OPEN HOME SUNDAY 11.45AM-12.15PM
Ref : www.wiltonandco.nz/WIL01835
Adriana Wilton 0297766902



» 66 Macarthur Street **LEVIN**

3 2 2 1

Magic on MacArthur

This eye-catching home delivers instant street appeal with its modernised roughcast exterior over the original brick, offers a fresh, contemporary feel. Step inside to discover three beautifully presented bedrooms, including a master retreat with a walk-in wardrobe and ensuite. A second bathroom caters to the rest of the household with ease. The modern kitchen features a breakfast bar and flows effortlessly into the spacious dining area

BUYER ENQUIRY OVER \$689,000
OPEN HOME SUNDAY 12.30PM-1PM
Ref : www.wiltonandco.nz/WIL01897
Ryan Watson 0223554790



» 21A Chester Street **LEVIN**

2 1 1 1

Cracker on Chester

Welcome to this delightful two-bedroom home, offering a perfect balance of comfort and convenience in a sought-after neighborhood. A spacious verandah welcomes you at the entrance, providing the ideal spot to relax with your morning coffee or unwind in the evening. A light-filled open-plan living and dining area, creating a warm and inviting atmosphere. Outside there is a studio room.

PRICE BY NEGOTIATION
OPEN HOME SUNDAY 11AM-11.30AM
Ref : www.wiltonandco.nz/WIL01859
Tracey Fraser 0210779062



» 57 Weraroa Road **LEVIN**

2 1 1 1

Solid brick unit, walk to town!

Whether you're downsizing, investing, or stepping onto the property ladder, this tidy brick unit is an ideal choice. Perfectly positioned just a short walk to town, it offers comfort, convenience, and low-maintenance living. Freshly updated with new carpet, curtains, and a modern paint palette, the home feels light, bright, and welcoming. The kitchen has been partially modernised, featuring a brand-new stove and fresh flooring.

BUYER ENQUIRY OVER \$410,000
OPEN HOME SUNDAY 1.45PM-2.15PM
Ref : www.wiltonandco.nz/WIL01903
Lynaire Cottle 0272224017



» 30A Perth Street **LEVIN**

3 1 1 1

Investors do your sums!

Tucked away on a rear section this three bedroom home is a gem! Currently tenanted paying \$550 per week, on a fixed term tenancy, this is the perfect investment with a great return. The tenant keeps the house like its their own! The kitchen and dining area flows seamlessly to the lounge area which opens through a ranchslider to a private rear yard with a single garage.

ASKING \$409,000
OPEN HOME SUNDAY 11AM-11.30AM
Ref : www.wiltonandco.nz/WIL01873
Adriana Wilton 0297766902



» 36 Salisbury Street **LEVIN**

4 1 1 1

Four bedrooms and stylish

This beautifully modernised 119m2 home combines the best of contemporary living with the character of yesteryear. Perfectly positioned close to town, schools, and the supermarket, convenience is just another highlight of this fantastic property. Set on a private, fully fenced 457m2 easy-care section, this home offers a wonderful sense of security and low-maintenance living - ideal for busy families.

BUYER ENQUIRY OVER \$569,000
OPEN HOME SUNDAY 12.30PM-1PM
Ref : www.wiltonandco.nz/WIL01889
Adriana Wilton 0297766902



» 27 Weraroa Road **LEVIN**

3 1 1 1

A Smart Start

You will find a stylish three bedroom home, featuring modern updates and a spacious layout thats perfect for comfortable living. Step inside, and you are greeted by a large lounge with impressive sloping ceilings, giving the space an airy and open feel. The fresh paint inside gives a clean, modern look, and the fairly new carpet adds a cosy touch, as does the gas heating.

ASKING \$495,000
OPEN HOME SUNDAY 11.45AM-12.15PM
Ref : www.wiltonandco.nz/WIL01875
Tracey Fraser 0210779062



» 69 Stafford Street **SHANNON**

4 2 2 2

Lifestyle starter with shed

Looking for a lifestyle property that ticks all the boxes? This four-bedroom home is ideal for families or anyone looking to embrace country living without sacrificing convenience. Be welcomed by the impressive tiled floor entrance foyer with its high ceiling. The heart of the home is the light-filled open-plan kitchen, dining, and living space, designed with entertaining in mind.

BUYER ENQUIRY OVER \$798,000
OPEN HOME SUNDAY 11.45AM-12.15PM
Ref : www.wiltonandco.nz/WIL01890
Adriana Wilton 0297766902



» 61 and 71 Stafford Street **SHANNON**

Two generous sections

61 Stafford Street - 3324m2 - \$230,000
71 Stafford Street - 3097m2 - \$230,000
Discover the perfect blend of space and convenience with these two generously sized sections (\$230,000 each) , ideally located on the edge of Shannon township. With a semi-rural outlook and a welcoming community atmosphere, these properties offer an enviable lifestyle with room to breathe.

ASKING \$230,000
VIEW BY APPOINTMENT ONLY
Ref : www.wiltonandco.nz/WIL01870
Adriana Wilton 0297766902



» 14 Twin Peaks Grove **KOPUTAROA**

3 3 3 1

IGNORE the RV of \$1,390,000

Our Motivated Vendor Says SELL! An extraordinary 26% under RV -thats serious value you cant afford to miss. This is your golden opportunity to secure a truly unique lifestyle property at an unbeatable price. The vendor is ready to meet the market - act now before someone else snaps it up!

BUYER ENQUIRY OVER \$1,059,000
OPEN HOME SUNDAY 2.15PM-2.45PM
Ref : www.wiltonandco.nz/WIL01857
Adriana Wilton 0297766902



» 9 Ely Place **LEVIN**

2 1 1 1

Convenience and easy living

Welcome to your next home, a cosy and well-maintained, two bedroom unit that offers the perfect blend of comfort, convenience, and easy living. Step inside to find a warm and inviting home with a heat pump that ensures year-round comfort, keeping you warm in winter and cool in the summer months. The kitchen is tidy and functional and is perfect for everyday cooking.

BUYER ENQUIRY OVER \$365,000
OPEN HOME SUNDAY 12.30PM-1PM
Ref : www.wiltonandco.nz/WIL01913
Tracey Fraser 0210779062



» 23 Quinn Road **LEVIN**

3 2 1 1

Comfort, style and security

Nestled in a peaceful, tree-lined street, this beautifully presented home offers the ideal blend of comfort, convenience, and modern style. Whether you're looking for your first home, forever home, or a low-maintenance base to lock up and leave, this property ticks all the boxes. Step inside and be welcomed by a light-filled, open-plan living space designed for effortless living and entertaining.

ASKING \$650,000
OPEN HOME SUNDAY 1.15PM-1.45PM
Ref : www.wiltonandco.nz/WIL01838
Adriana Wilton 0297766902



» 6 Elizabeth Street **LEVIN**

3 2 2 1

Home + Sleepout + Garage

If you've been searching for a home that offers flexibility and space, this well-presented property is a must-see. Featuring three good size bedrooms all with double wardrobes, and multiple living zones, it's ideal for families, extended living, or those who love to entertain. The open-plan kitchen and dining area flows effortlessly into the lounge and a large, light-filled sunroom - perfect for year-round enjoyment

BUYER ENQUIRY OVER \$585,000
OPEN HOME SUNDAY 11AM-11.30AM
Ref : www.wiltonandco.nz/WIL01884
Adriana Wilton 0297766902



» 4 Gardener Street **LEVIN**

4 1 1 1

A goodie in Gardener

Welcome to this well presented four bedroom home, perfectly positioned in a sought-after area, ideal for family's, first-home buyers, or investors alike. Step inside and you'll be impressed by the spacious layout. The large lounge is warm and inviting, featuring a log burner and heat pump to keep you comfortable all year round.

BUYER ENQUIRY OVER \$570,000
OPEN HOME SUNDAY 2PM-2.30PM
Ref : www.wiltonandco.nz/WIL01914
Tracey Fraser 0210779062



» 174 Bath Street **LEVIN**

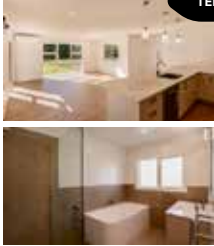
2 2 1 1

NEW PRICE!

Welcome to this fabulous low maintenance two bedroom home designed for comfort and convenience. Step inside the entrance that leads to an inviting living / dining area, where warmth is guaranteed thanks to a log burner, heat pump and HRV system. Whether its a chilly winters night or a relaxing weekend this home has you covered. The well appointed kitchen offers a practical layout, has lots of bench space, a wall oven, dish drawer

BUYER ENQUIRY OVER \$599,000
OPEN HOME SUNDAY 1.15PM-1.45PM
Ref : www.wiltonandco.nz/WIL01865
Tracey Fraser 0210779062

9 Railway Terrace, Ohau, Horowhenua.

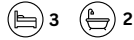


TENDER

Your Dream Home Awaits!

Discover the perfect blend of peacefulness and modern living with this brand new, spacious 3-bedroom property. Nestled in the serene surroundings of Ohau, this home offers the ultimate lifestyle living without the hassle of maintenance.

Open: Sat, 7 June 2:00 pm - 2:30 pm



To be sold by tender
(closes on June 12th)

David Thompson
M 022 550 6066
E david.t@wbg.co.nz

31 Muhunoa East Road, Ohau, Horowhenua.



TENDER

Oasis In Ohau!

Step into this impressive, brand new 3-bedroom home, where contemporary design meets the peacefulness of Ohau. This property offers the perfect lifestyle living experience, minus the high maintenance worries.

Open: Sat, 7 June 1:00 pm - 1:30 pm



To be sold by tender
(closes on June 10th)

David Thompson
M 022 550 6066
E david.t@wbg.co.nz

1 Cypress Way, Levin, Horowhenua.

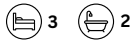


DEADLINE

Stylish & Convenient

Welcome to effortless modern living in this beautifully built 3-bedroom, 2-bathroom brick home, perfectly positioned in a sought-after Levin neighbourhood. Designed with families in mind, this home offers comfort, functionality, and style in equal measure.

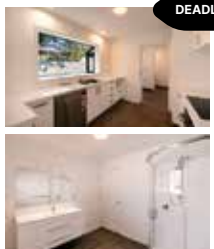
Open: Sun, 8 June 11:00 am - 11:30 am



To be sold by deadline
(by June 12th)

David Thompson
M 022 550 6066
E david.t@wbg.co.nz

2 Cypress Way, Levin, Horowhenua.



DEADLINE

Fully Renovated Classic

Step into timeless charm with a fresh, modern twist at this beautifully renovated 4-bedroom, 1-bathroom home. Lovingly updated from top to toe, this spacious residence blends the character of an older home with the convenience of contemporary living.

Open: Sun, 8 June 11:30 am - 12:00 pm



To be sold by deadline
(by June 12th)

David Thompson
M 022 550 6066
E david.t@wbg.co.nz

4 Cypress Way, Levin, Horowhenua.

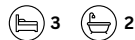


DEADLINE

Ideal First Home or Investment Gem

Welcome to this brand new well-appointed 3-bedroom, 2-bathroom home in the heart of Levin, offering the perfect blend of comfort and potential. Whether you're a first home buyer looking to step onto the property ladder or an investor seeking a smart addition to your portfolio, this property delivers.

Open: Sun, 8 June 12:00 pm - 12:30 pm



To be sold by deadline
(by June 12th)

David Thompson
M 022 550 6066
E david.t@wbg.co.nz

8 Cypress Way, Levin, Horowhenua.

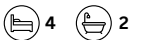


DEADLINE

Low Maintenance Family Living

Discover the perfect blend of space, style, and comfort in this brand new 4-bedroom, 2-bathroom home, designed with families in mind. Located in a peaceful pocket of Levin, this home offers everything you need for easy, modern living.

Open: Sun, 8 June 1:30 pm - 2:00 pm



To be sold by deadline
(by June 12th)

David Thompson
M 022 550 6066
E david.t@wbg.co.nz

5 Cypress Way, Levin, Horowhenua.

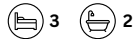


DEADLINE

First Home Buyers & Investors – This One's for You

Welcome to this brand new well-appointed 3-bedroom, 2-bathroom home in the heart of Levin, offering the perfect blend of comfort and potential. Whether you're a first home buyer looking to step onto the property ladder or an investor seeking a smart addition to your portfolio, this property delivers.

Open: Sun, 8 June 12:30 pm - 1:00 pm



To be sold by deadline
(by June 19th)

David Thompson
M 022 550 6066
E david.t@wbg.co.nz

3 Railway Terrace, Ohau, Horowhenua.



DEADLINE

Freshly Renovated & Full of Possibilities

Set on a generous section, this beautifully renovated 4-bedroom, 2-bathroom home offers the perfect blend of modern comfort and practical space. Whether you're a growing family, hobbyist, or someone who simply needs room to spread out, this property delivers in spades.

Open: Sat, 7 June May 1:30pm - 2:00 pm



To be sold by deadline
(by June 19th)

David Thompson
M 022 550 6066
E david.t@wbg.co.nz

3 Cypress Way, Levin, Horowhenua.



DEADLINE

Stylish Entry-Level Living with Investment Appeal

A brand-new, well-appointed 3-bedroom, 2-bathroom home that perfectly balances comfort, style, and opportunity. Whether you're a first-home buyer eager to take that exciting first step onto the property ladder, or an investor seeking a smart, low-maintenance addition to your portfolio, this property ticks all the right boxes.

Open: Sun, 8 June 1:00 pm - 1:30 pm



To be sold by deadline
(by June 26th)

David Thompson
M 022 550 6066
E david.t@wbg.co.nz

Contact me today to schedule your private viewing.

David Thompson

M 022 550 6066

E david.t@wbg.co.nz

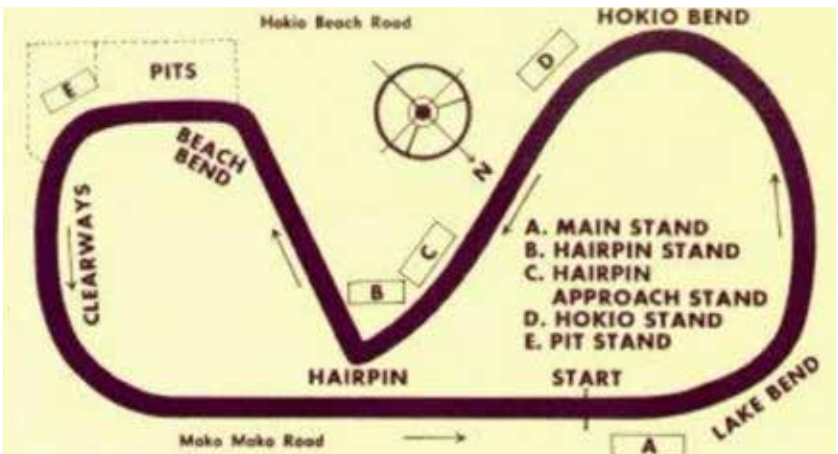


MOTOR RACING IN LEVIN

Compiled by Debbi Carson



CAR RACING STARTED WITH AN ENGLISHMAN, RON FROST MBE, who brought his love of racing to New Zealand and based himself in Levin. The Levin motor racing circuit was inside the horse racing track located between Hokio Beach Road and Mako Mako Road towards Lake Horowhenua. It was opened in January 1956 with its first race on January 14, organised by the Levin Car Club. The track was about 2.4km long and roughly the shape of a pair of racing goggles. Being a short but tight track it suited the smaller cars with engines from 1-2.5L. There were three race meetings in a season, which started in September and finished in April, with the exception of the 1969-70 and 1972-73 seasons that had four race meetings. April 1961 race meeting (No 16) saw the only fatality at the track when Duncan McKenzie rolled his car at Hokio Bend during the third race. He was taken to Palmerston North Hospital where he was pronounced dead on arrival. Although there was only one fatality, the track had its fair share of crashes. Most drivers walked away with just a few bruises and injured pride, but there wer at least three drivers who were hospitalised with serious fractures and burns. At the January 15, 1966, race meeting was one of the largest spectator turnouts with a crowd about 23,000. There was also a demonstration of mini-spinning, the equivalent of today's boy racer burn-outs.



Images and story: Kete Horowhenua



FIVE OF THE HARPER BROTHERS From left: Ernest, Martin, Allan (seated), George, and William (inset). Photo: Adopt an Anzac Project

CORRECTION: In our May 16, 2025, issue of the Horowhenua Star, we ran a story about Levin barrister and solicitor Philip Hamilton Harper, with the photo above. This photo is in fact of another Harper family in Levin. The two families are not related, though their ancestors both landed in Canterbury in the late 1800s, and had many sons who fought in the First World War. "The men depicted in the photograph, which includes my father, George Harper and uncles Ernest, Allan, Martin and William, are not connected to Philip Hamilton Harper: we are from different families," Max Harper told us. "My grandfather, James Harper, immigrated to New Zealand in the 1870s from Cranfield, Bedfordshire. He married my grandmother, Annie Gray, on June 6, 1878, in Leithfield, North Canterbury. They had 10 children together: John (b. 1879), William (1881), Allan (1882), Ernest (1884), George (1885), Elsie and James (both 1886), Martin (1888), Frank (1893) and Edwin (1894). In the early 1890s, my grandparents relocated with their children to Rongotea before settling outside Foxton. Six of these Harper brothers from Foxton fought in the First World War: William, Allan, Ernest, George, Martin and Frank. Five returned to New Zealand at the conclusion of the war. Martin died on on August 30, 1918, of wounds sustained in the Third Battle of Albert (August 21-23). My father, George, and uncles William and Ernest, farmed land on Arawhata Road, Levin, after the war."



Tukorehe take speed protest to the road

Ngāti Tukorehe voiced their displeasure at planned speed limit increases by staging a protest by the highway at Kuku on Sunday.

About 60 people, including Te Pati Māori co-leader Debbie Ngarewa-Packer, waved flags and displayed posters outside Wehiwehi Marae, after a tangi shifted the protest from Tukorehe Marae. Spokesperson Karnama Peita (Ngāti Tukorehe), pictured at left, said the safety of users and locals was paramount. "It's a nightmare getting in and out of our homes, and our marae," he said. "It's a dangerous stretch of road that's had plenty of crashes. "When they happen on our whenua, we're the ones who have tidy it all up." The iwi wants the government to keep the speed limit at 80km/h, rather than lift it to 100km/h.

Two big business events in one day

The Horowhenua Company is hosting two influential events on Thursday (June 12), offering a unique opportunity for local leaders, business owners and community members to engage with both national policy and regional economic strategy.

Up first, from 11.30am to 1pm, is a business luncheon with Simon Watts, who will update on local government changes and developments within his ministerial portfolios.

As a chartered accountant and former international finance professional, the minister brings valuable insights into how national reforms might influence local delivery and planning.

From 5.30-7.30pm on the same day is the Electra BAS, where respected economist Benje Patterson will speak on the economic opportunities arising from a major infrastructure project about to get under way in Horowhenua.

Known for his engaging and jargon-free style, Benje will outline how data and regional insight can be used to shape smarter decisions and long-term growth.

"These two events represent the best of what we strive to bring to Horowhenua – strategic conversations, community leadership, and future-focused thinking," says The Horowhenua Company chief executive Andrew Reid.

■ For tickets visit www.thcl.nz.

BRIEFS

Gutenberg reunion planned

A reunion is being planned for descendants of Gutenberg immigrants who arrived to New Zealand from Germany in 1876. The ship *Bremerhaven* docked at Wellington Harbour in March 23, 1876, after nearly 100 days at sea. A total of 145 Vogel Scheme immigrants arrived. Several of the immigrant families settled in Horowhenua, Manawatū, Whanganui, Taranaki and Wairarapa regions. A reunion will be held for all descendants in Wellington on Sunday March 22, 2026. More information at alve.nz/alvenews/category/reunion

Kids Market to Intermediate

The successful Ōtaki Kids Market is coming to Levin Intermediate School in a collaboration that will help fund a student trip to Japan. The market will be at the school on Saturday, June 28. Like the Ōtaki Kids Market, it's not just a means of making some money – it also helps young people to gain real-world business experience, showcase their creativity, and feel the pride that comes with running their own stall. The market will be at Levin Intermediate School, 9am-2pm Saturday, June 28. To register a stall for \$5 (car boot \$10), go to surveymonkey.com/r/BTKJXY

SPORTS RESULTS & DRAWS

RUGBY

Draw, Saturday, June 7

Ramsbotham Cup (Premier) 2.45pm kick-off

Rāhui v Levin COB, Ōtaki Domain.

Foxton v Waikanae, Easton Park, Foxton.

Paraparaumu v Shannon, Paraparaau Domain.

Bill Muir Cup (Senior Reserve), 1pm kick-off

Foxton v Waikanae, Easton Park, Foxton.

Paraparaumu v Athletic, Paraparaau Domain.

Rāhui v Levin COB, Ōtaki Domain.

RESULTS

No games last weekend (King's Birthday)

Wednesday May 28 – Premier catch-up game

Waikanae 37, Shannon 34. **Waikanae:** Tries to S

Osmond 2, I Ioka, J Tarrant, K Koto, P Brown. C

Bond 2 conv, pen. **Shannon:** Tries to A Walker, L

Rangiahua, D Hemopo, N McLeod-Jones. S Pape 4

conv, 2 pen.

GOLF

Foxton

Midweek, May 29

Joanne Wilton par, Rick Mooney -1, Matt Hullett -2,

Malcolm George c/b -3.

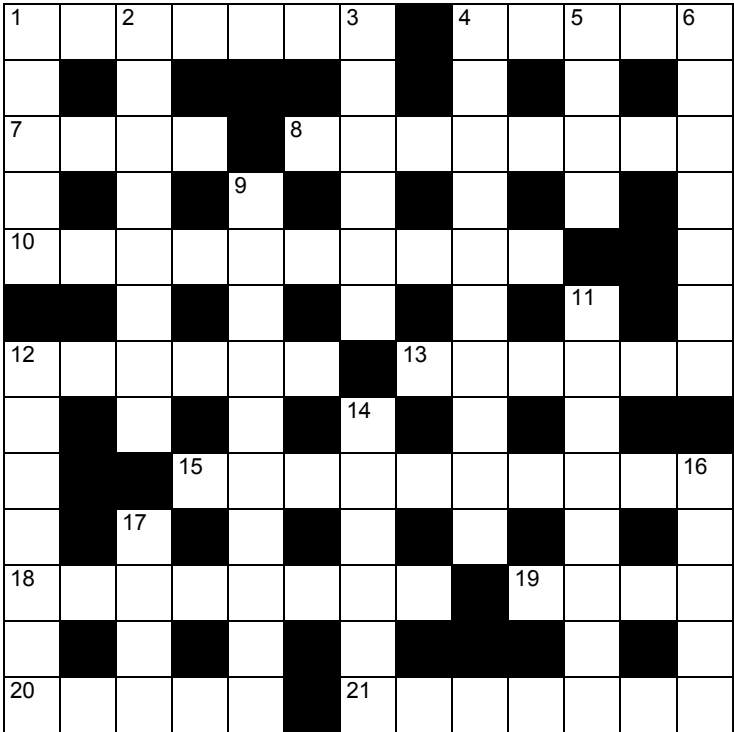
June 3

Ann Hogg 34, Marty Berry c/b 32, Tamati McGregor

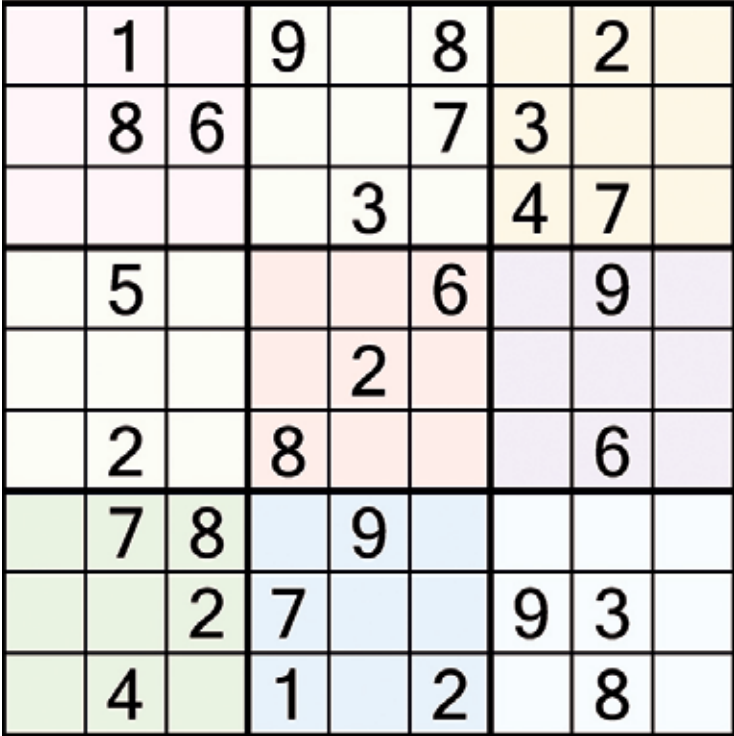
32, Dean Winyard 31, Joanne Wilton c/b 30. 2's:

Marty Berry on 10.

THE CROSSWORD #NZ1919C (answers below right)



SUDOKU PUZZLES thepuzzlecompany.co.nz
EASY #63H Use logic and process of elimination to fill in the blank cells using the numbers 1 through 9. Each number can appear only once in each row, column and 3x3 block.



KIWIANA QUIZ ANSWERS: 1. Edmonds Cookbook. 2. Pavlova. 3. No 8 Wire. 4. a. 1986. 5. Jandals. 6. Anzac Biscuits. 7. Foxton Fizz. 8. Poi E. 9. L&P. 10. Milkshakes. 11. Snifters. 12. Bungee jumping. 13. Southern man. 14. Bach or crib. 15. Whittakers.

CROSSWORD #1919C ANSWERS Across: 1. Auction 4. Matai 7. Acne 10. Sure To Rise 12. Astute 13. Postie 15. Charitable 18. Carousel 19. Four 20. Score 21. Staunch. **Down:** 1. Adams 2. Contrite 3. Nature 4. Molesworth 5. Tote 6. Idolise 9. State house 12. Alpacas 14. Briefs 16. Earth 17. Arvo.

- ACROSS
- 1 Sell to the highest bid (7)

4 Native tree (5)

7 Skin complaint (4)

8 High-heeled shoe (8)

10 Edmonds Cookery Book slogan (4,2,4)

12 Shrewd (6)

13 Mail deliverer (inf) (6)

15 Generous (10)

18 Merry-go-round (8)

19 Quartet (4)

20 Gouge (5)

21 Steadfast (7)
- DOWN
- 1 Lisa ___, NZ

2 Repentant (8)

3 The physical world (6)

4 NZ's biggest farm, covering 1800sq km (10)

5 Carry (4)

6 Worship (7)

9 Government-owned dwelling (5,5)

11 Obstinate (8)

12 Camelids farmed in NZ since the late 1980s (7)

14 Undies (6)

16 Soil (5)

17 Afternoon (inf) (4)
- Paralympian from a famous family (5)

Note to Self:

YOU CAN'T CONTROL HOW OTHER PEOPLE RECEIVE YOUR ENERGY. ANYTHING YOU DO OR SAY GETS FILTERED THROUGH THE LENS OF WHATEVER PERSONAL SHIT THEY ARE GOING THROUGH AT THE MOMENT. WHICH IS NOT ABOUT YOU. JUST KEEP DOING YOUR THING WITH AS MUCH INTEGRITY AND LOVE AS POSSIBLE.

Do everything in love

1 CORINTHIANS 16:14

If you can change your mind, you can change your life.

— WILLIAM JAMES

SUDOKU SOLUTION #63H

7	1	3	9	4	8	5	2	6
4	8	6	2	5	7	3	1	9
2	9	5	6	3	1	4	7	8
8	5	7	3	1	6	2	9	4
6	3	1	4	2	9	8	5	7
9	2	4	8	7	5	1	6	3
1	7	8	5	9	3	6	4	2
5	6	2	7	8	4	9	3	1
3	4	9	1	6	2	7	8	5

KIWIANA QUIZ

Kiwiana celebrates unique icons that are a part of New Zealand culture and identity. Answers bottom of page.

1. More copies of this book have been sold than any other book in New Zealand. What is it?

2. What Christmas dessert has long been at the centre of a trans-Tasman argument?

3. What is the term that epitomises the “kiwi bloke” as someone who can turn their hand to anything?

4. Dave Dobbyn’s *Slice of Heaven* reached No 1 on the NZ music charts in what year? a. 1986 b. 1987 c. 1988 d. 1985.

5. Known as flip-flops in the UK and USA, and thongs in Australia, what do we call them in NZ?

6. Made of rolled oats, flour, sugar, butter, golden syrup, baking soda and boiling water, and popularised during the First World War, what are these?

7. What retro brand of soft drink dating back to 1918 was originally distributed in Foxton and as far south as Ōtaki, and north to Sanson? In 2010 it began enjoying a resurgence in popular cafés and some bars.

8. What song by NZ group Pātea Māori Club reached No 1 on the NZ music charts in 1984?

9. What is the popular soft drink with the slogan “World Famous in New Zealand since ages ago”?

10. The Longest Drink In Town — since 1968. What do dairies and ice-cream parlours use these iconic paper cups for?

11. What Pascall sweet was discontinued due to a lack of interest in 2008?

12. What adventure sport was commercialised in NZ in 1986?

13. What is a male farmer, hunter or bushman hailing from the deep rural south known as?

14. A small holiday home in NZ is also known as?

15. What popular NZ chocolate company is based in Porirua?

FACEBOOK

81. **Snuggery** – a cozy or comfortable place.
82. **Sockdolager** – a decisive blow or an exceptional person or thing.
83. **Taradiddle** – trivial lie or nonsense.
84. **Tatterdemalion** – person dressed in ragged clothing.
85. **Thingamajig** – something whose name is forgotten.

ENGLISH GRAMMAR’S 100 WORDS YOU DIDN’T KNOW YOU NEEDED

86. **Tintinnabulation** – the ringing or sounding of bells.
87. **Troglodyte** – a person who lives alone, hermit-like.
88. **Ultracrepidarian** – one who speaks beyond their knowledge.
89. **Vomitorium** – an entrance or exiting a stadium or theatre.
90. **Wabbit** – feeling exhausted or slightly unwell.

FANCY A COFFEE AND CAKE FOR 2 AT YOUR LOCAL CAFE?

Are you too lackadaisical to give us a laugh, don’t be a nitwit, send us some malarkey! Email your short story – no more than five sentences – with as many words above included. The best one will be printed in next week’s paper (June 6). Value \$30. Must be in by 5pm Tuesday June 10. e: debbi@idmedia.co.nz

30.5.25 winner is Mary Hopgood.

“I imagine that some of our **sialoquent** politicians will be hitting the slopes in trendy matching **salopettes** and ski jackets very soon. They are privileged to represent us all and are expected to have the intelligence and manners to behave appropriately and maturely. Unfortunately, some behave like a **snollygoster** and are ready to figuratively stab a **snickersnee** in the back of a rival with no **shilly-shally**. The **schadenfreude** they experience in parliament through **scuttlebutt**, **skullduggery** and **shenanigans** is enough to make me shudder and their more decent colleagues to **skedaddle**.”

Why advertise with The Horowhenua Star?

- ★ The best distribution – 15,000 papers delivered every week, including 2500 in Foxton.
- ★ A paper readable online, plus the big stories of the week on the website.
- ★ The best journalists in the region, with three current or former editors on the staff. That means the best stories, written accurately and fairly.
- ★ The best reproduction on enhanced newsprint, so images are crisp.
- ★ The best layout with one of the country’s top news page designers on the team.
- ★ A team that builds relationships with advertisers to get the best results.



Talk to Pip: 027 809 4201, sales@horowhenuastar.com or Debby: 027 285 4720 debbi@idmedia.co.nz

PROPOSED ENROLMENT SCHEMES

Horowhenua College and
Waiopēhu College, Levin

The Ministry of Education has identified that enrolment schemes are required at the colleges, and they have given both school boards notice of this.

The Ministry has developed proposed enrolment schemes for the colleges under section 72 of the Education and Training Act 2020.

As part of this process the Ministry is consulting with the school communities and with people living in the area. The schemes could affect which school a student will be able to enrol in next year. If you have any comments about either of the proposed enrolment schemes for the colleges that you would like to be included in the reports about the proposals please forward them to:

network.lowerhutt@education.govt.nz
by Sunday 13 July, 2025.

A copy of the proposed schemes can be obtained by contacting local schools or by emailing

network.lowerhutt@education.govt.nz

community

REPAIR CAFE
LEVIN

June 14, 10am-1pm


Every second
Saturday of the month

Senior Citizens Hall
cnr Cambridge and
Montgomery St, Levin

Contact

Vic 021 311 686 or
Judy 027 271 7192

cars



**THAT CAR GUY
MATT**

Buyer of all vehicles
Cars 4x4s
Vans Trucks
Utes

020 4057 2087

garage sale

GARAGE SALE

Household items
Kids toys
Crafts etc

**Saturday June 7
9am-1pm
54 Kawiu Road
Levin**

**DEATH
NOTICES**
**remember
your loved one
in a notice**

e: debbi@idmedia.co.nz
or txt
027 285 4720

plumbers



**FREE
QUOTES**

PLUMBING
Maintenance
Renovations
New Homes
Light Commercial

GAS FITTING
Servicing of all appliances
New installations
Heaters, cookers
Water heating

Shane 027 282 1048 • Alex 027 345 6014
e: heplumbingandgas@gmail.com

maintenance



Brent Congreve
027 249 2575
06 368 7895

brent@bjproperty maintenance.co.nz
www.bjproperty maintenance.co.nz

FREE QUOTES: Tree removal pruning
• stump grinding • branch mulching
• lifestyle block maintenance
• retaining walls • decks/repairs
• fences/repairs • outdoor structures
• hedge trimming • landscaping
• small inside jobs • odd jobs

stock auctions

Carrfields

WEDNESDAY
SALE

Levin Showgrounds
Tiro Tiro Road
entrance

10.30am
Calves

11am
Prime sheep
Store lambs
Ewes
Weaners
Yearlings
2 yr old cattle

Contact
David Haworth
027 450 4133
06 368 2642

funeral directors

I.C.MARK LTD
Serving the local community since 1972

FUNERAL DIRECTORS



The Funeral Home

Funeral Directors
Associated with the
New Zealand
Funeral Directors
Association

0800 ICMARK ~ (06) 368-8108

545 - 547 Queen Street East, Levin
The Avenue Crematorium, Levin

Death Notifications Online - www.icmark.co.nz

Our local area encompasses Levin, Otaki, Foxton & Shannon - We do conduct funerals further afield

pest control



UNWANTED ANTS
ARE OUR SPECIALTY!

Our treatments are guaranteed odourless and stain free. We also have solutions to control wasps, flies, spiders, cockroaches, mosquitoes, silverfish, moths, plus rats and mice.

PROTEKT PEST CONTROL

phone PAUL 06 364 5759 or 027 448 3910
or Wellington 04 472 9948



Read the full paper online and see the latest stories at

horowhenuastar.com

SUBSCRIBE TO THE STAR

If you live out of district we can mail you a copy.
Only \$6/week (minimum 3 months). E: debbi@idmedia.co.nz

Don't just get seen, **GET NOTICED.**
Advertise in the Star.

COLLING & GRAY

PANELBEATERS

SPRAYPAINTERS

LEVIN

Approved Structural Collision Repair Specialist

NO REPAIR TOO SMALL

SPECIALISING IN: • All Vehicle Insurance Claims
• Plastic Welding • Accident Damage • Rust Repairs
• Motorbike Repairs • Vehicle Restoration Work
• Relief Vehicles Available



22 Liverpool Street, LEVIN

368 4722



collingandgray@xtra.co.nz • panelbeaterslevin.co.nz



Entrance tides June 6-13

<https://www.metservice.com/marine/regions/whanganui-manawatu/tides/locations/foxton>

<https://www.metservice.com/marine/regions/kapiti-wellington/tides/locations/waitarere-beach>

Please note: The actual timing of high and low tide might differ from that provided here. Times are extrapolated from the nearest primary port for this location, so please take care.

MANAWATU RIVER FOXTON

		HIGH	LOW	HIGH	LOW	HIGH
FRI 6 JUN	-	00:32	06:23	12:58	18:55	
SAT 7 JUN	-	01:27	07:12	13:47	19:44	
SUN 8 JUN	-	02:15	07:58	14:33	20:29	
MON 9 JUN	-	02:58	08:40	15:16	21:10	
TUE 10 JUN	-	03:39	09:21	15:56	21:48	
WED 11 JUN	-	04:17	10:02	16:35	22:26	
THU 12 JUN	-	04:56	10:42	17:13	23:03	
FRI 13 JUN	-	05:35	11:22	17:51	23:40	

WAITARERE BEACH

		HIGH	LOW	HIGH	LOW	HIGH
FRI 6 JUN	05:38	11:56	18:10	-	-	
SAT 7 JUN	-	00:25	06:27	12:45	18:59	
SUN 8 JUN	-	01:13	07:13	13:31	19:44	
MON 9 JUN	-	01:56	07:55	14:14	20:25	
TUE 10 JUN	-	02:37	08:36	14:54	21:03	
WED 11 JUN	-	03:15	09:17	15:33	21:41	
THU 12 JUN	-	03:54	09:57	16:11	22:18	
FRI 13 JUN	-	04:33	10:37	16:49	22:55	



STAR DIRECTORY

Callum Pearson
Registered Electrician

CPRE

- rewires
- new builds
- switchboard upgrades
- additions / alterations
- lighting upgrades
- heatpump installation & service
- TV Data install & service
- EV charging
- CCTV & alarms
- Smart Home & IoT

callum@cpre.nz | 027 695 8925



TS SURVEYORS

- ▶ Subdivisions
- ▶ Land Surveying
- ▶ Boundary Marking
- ▶ Topographical Surveys
- ▶ Construction Setout

027 759 6854

tim@tssurveyors.co.nz
www.tssurveyors.co.nz

HOROWHENUA FREEMASONS

Are you
interested?

PHONE

021 0835 5308



McCown Pumps

022 587 5450

**Farm, House, Bore, Septic,
Irrigators, Pulsators, Maintenance,
Replacement**

ALL ENQUIRIES, PLEASE CALL

DAN 022 587 5450

6 Roslyn Road, Levin • danielmccown01@gmail.com

NEW LID ROOFING LTD

True 35 years experience

- All reroofing repairs • Re-roof
- Spouting • Moss kill
- **FREE QUOTES**



Call Bruce for all your roofing solutions
027 932 3754 • bprobbie54@gmail.com

ŌTAKI YESTERDAY

Ōtaki's annual historical magazine, featuring stories about the people and places of old Ōtaki.

All issues available
\$25/copy + p&p

Contact debbi@idmedia.co.nz
or text 027 285 4720



HMC FOR UTES AND SUVS



WEEKLY FROM \$147

ONLY \$27,995

2022 SUZUKI S-CROSS JLX 2WD 1.4PT/6AT

NZ new, 1 private owner, sold and serviced by us from new, only 50,000km, alloys, roof rails, towbar, window tints, sat nav, rev camera / sensors, Bluetooth/USB, FCW, LDW, keyless entry/start/stop, heated front seats, climate a/c, adaptive cruise cont, factory warranty balance.



WEEKLY FROM \$198

ONLY \$37,590

2024 SUZUKI VITARA SAFARI JLX 1.4PT/HYBRID/6AT

NZ new, ex-demo, only 2,860km, alloys, window tints, roof rails, roof racks, bonnet guard, FCA, LDW, DRL's, DSC, paddle shift cont, adaptive cruise cont, climate a/c, immobiliser, Bluetooth/USB, rev camera/sensors, keyless entry/start/stop, service history/books, factory warranty balance & ORC included.



WEEKLY FROM \$290

ONLY \$55,995

2024 MITSUBISHI PAJERO SPORT VRX 2.4DT/4WD/8AT

NZ new, only 15,800km, towbar, alloys, running boards, rear spoiler, window tints, roof rails, bonnet guard, electric tailgate, adaptive cruise cont, surround view/rev camera, Bluetooth/USB, 7-seater in leather, heated front seats, paddle shift, DRL's/FCW/DBC, climate a/c, keyless entry/start/stop, factory warranty balance.



WEEKLY FROM \$162

ONLY \$30,995

2019 HOLDEN COLORADO LTZ D/C 2.8DT/2WD/6AT

NZ new, only 67,560km, alloys, towbar, tuffdeck, canopy, running boards, bonnet guard, climate a/c, auto headlights, Bluetooth/USB, rev camera/sensors, sat nav, window tints/monsoons, cruise cont, keyless entry.



WEEKLY FROM \$320

ONLY \$61,995

2025 ISUZU MAXX RIDER 3DT/4WD/6AT

NZ new, ex-demo, only 3,790km, Black alloys, sports bar, tonneau cover, bonnet guard, window monsoons, select 4WD with hi-lo, diff lock, auto headlights, Bluetooth, cruise cont, BSM, DBC, rev camera/sensors, service books, factory warranty balance.



WEEKLY FROM \$208

NOW ONLY \$39,995

2025 SUZUKI S-CROSS JLX HYBRID 1.4P/2WD/6AT

NZ new, ex-demo, only 60km, alloys, panoramic sunroof, window tints, FCW, LCW, BSM, LKA, DRL's, RCA, heated mirrors & front seats, dual climate a/c, sat nav, surround view/rev camera's, keyless entry/start/stop, Bluetooth/USB, factory warranty balance, O.R.C included.

WORKSHOP NOW OPEN SATURDAYS!
HOURS: MON-FRI: 7:30AM-5PM
SAT: 8AM-12PM

GET A WOF INSPECTION JUST \$75!

Get Ready for Winter! Ask Us About Our FREE Battery Test to Keep You Moving!

MORE INFORMATION

0800 744 111

HMC LEVIN
15-19 Bristol Street, Levin

2018 SUZUKI SWIFT GL 1.2P/5MT

NZ new, only 64,100km, 5 speed manual, alloys, window tints, CD stereo, Bluetooth, cruise cont, steering wheel cont, abs, a/c, immobiliser, keyless entry, 2 keys.



NOW ONLY \$12,995
WEEKLY FROM \$70

2016 HOLDEN BARINA CD 1.6P/6AT

NZ new, only 85,170km, alloys, auto headlights, CD stereo, Bluetooth, central locking, abs, a/c, immobiliser, cruise cont, traction cont, multi-function steering wheel.



ONLY \$11,995
WEEKLY FROM \$65

2013 NISSAN QASHQAI 2P/AT

NZ new, ex-fleet lease vehicle, full Nissan service history with service books, 290,950km, alloys, window tints, abs, Bluetooth stereo, a/c, immobiliser, keyless entry.



ONLY \$6,495
WEEKLY FROM \$37

2007 MAZDA MPV 2.3P/AT

Import, only 174,800km, alloys, window tints, roof rails, CD stereo, Bluetooth/USB, rev camera, keyless entry, 2 keys, immobiliser, 7-seater.



ONLY \$7,995
WEEKLY FROM \$45

2007 HOLDEN COMMODORE SS V8 6.0P/AT

NZ new, 190,500km, 20" black alloys, rear spoiler, towbar, window tints/monsoons, CD stereo, cruise cont, traction cont, abs, a/c, immobiliser, keyless entry.



ONLY \$21,995
WEEKLY FROM \$115

2013 TOYOTA YARIS YR 1.3P/4AT

NZ new, only 86,000km, a/c, CD stereo, electric windows/mirrors, abs, steering wheel controls, Bluetooth/aux, immobiliser, keyless entry.



ONLY \$8,995
WEEKLY FROM \$50



ONLY \$6,995

WEEKLY FROM \$40

2010 SUZUKI SWIFT 1.2P/CVT

Import, only 162,500km, window tints/monsoons, a/c, CD stereo, electric windows/mirrors, abs, immobiliser, keyless entry.

2003 HOLDEN ASTRA CITY S/W 1.8P/AT

NZ new, only 93,750km, roof rails, a/c, CD Stereo, keyless entry, back to basics Holden Astra in exceptional condition, low km's and so much room in the back,



WEEKLY FROM \$30

ONLY 4,995

FRESH ARRIVALS!



360 Oxford Street, Levin

Julian 027 216 7989

P: 0800 744111

W: hmclevin.co.nz

WHERE JOURNEYS BEGIN

Talk to us today about finance options

- Best value new and used vehicles
- Comprehensive repair and maintenance options
- Practical pick up and drop off service
- Guaranteed genuine parts and accessories

This finance estimate is calculated based on a 60 month term at 11.95% fixed interest per year - actual interest may differ. \$500 establishment and \$2.90 monthly maintenance fees apply. Lending terms and conditions will apply.*